

 **The Department of Corrections offers trade training and qualifications in the primary sector in twelve of our prisons throughout New Zealand.**

## Farming

The Department of Corrections has a number of farms across the country where a variety of activities concerned with the growing of crops, caring for livestock and other farming duties including fencing and general maintenance are carried out.

## Forestry

Some prisons provide forestry training by harvesting forests to ensure long-term sustainability. General silviculture within the forest is carried out and logs from the forest are sold to New Zealand sawmills and also exported overseas.

### **An employment pathway**

Hera\*, 30, is a prisoner at Auckland Region Women's Corrections Facility (ARWCF). Hera's working day starts at 9:30 am, when she goes to work/study at the prison's Horticulture Training Facility. With the help of her Horticulture Instructor, Hera has received both level 2 and level 3 National Certificates in Horticulture. At her graduation ceremony, an ex-prisoner from ARWCF who now runs a gardening and lawn-mowing business, came to speak about her success and Hera is fired up to follow the same path. She's hoping to continue her study with a level 4 certificate through the Open Polytechnic and then go into business with her mum and dad.

\*not her real name

## Horticulture

There are a number of nurseries and training operations across the country where horticulture skills can be learnt. An organic market garden at Christchurch Men's Prison supplies produce to the market.

We offer a range of on the job training, training courses and hands on experience including:

- > Nursery and organic market gardens
- > Internal and external grounds maintenance crews and contract work parties
- > Sheep, dairy, pig and dry stock farming and associated duties
- > Forestry crews
- > Forklift operations

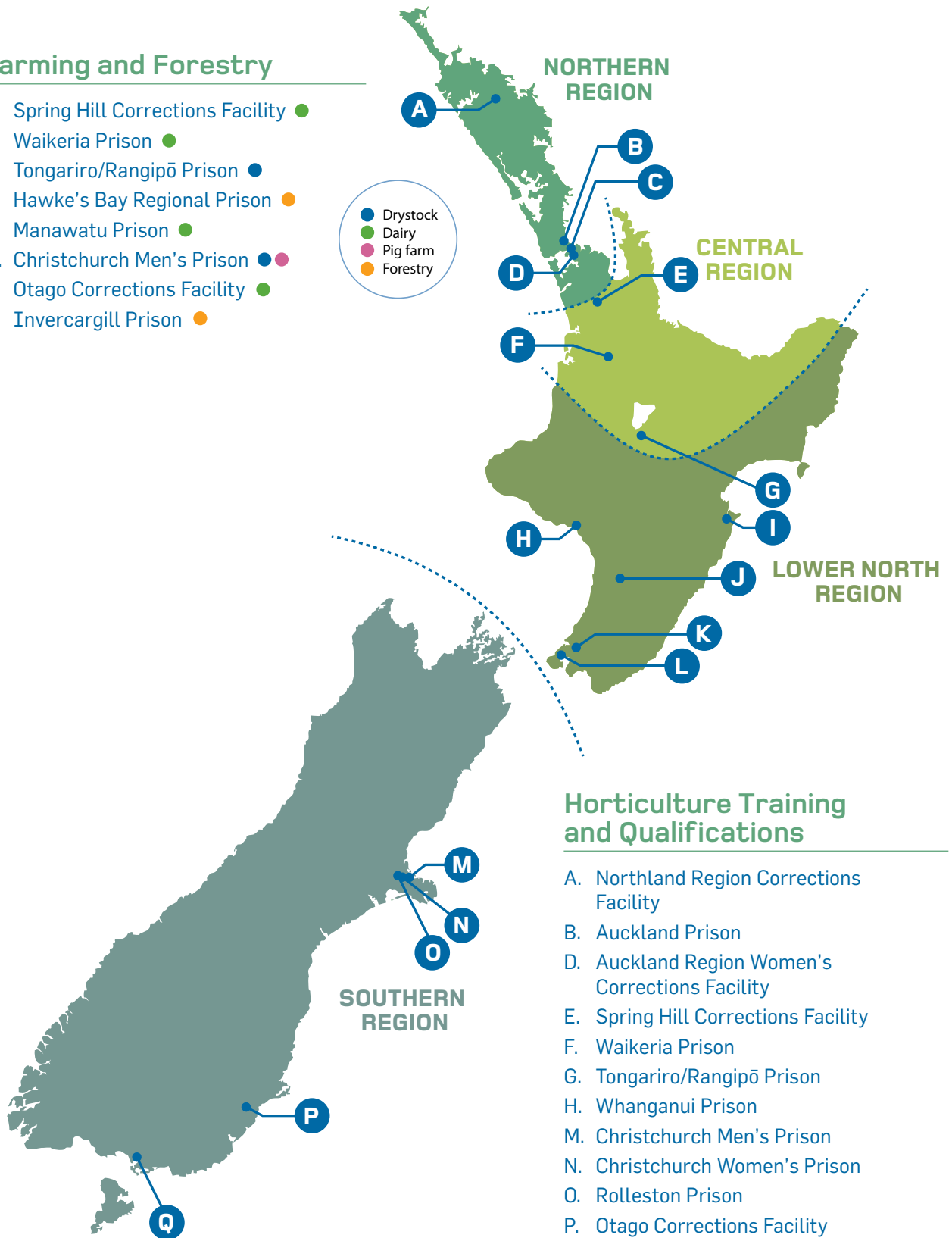
We offer the following qualifications:

- > National Certificate in Horticulture
- > National Certificate in Agriculture
- > National Certificate in Forestry
- > National Certificate in Pork Production
- > Growsafe Certificate
- > Certificate in Forklift Operations

We also partner with accredited tertiary institutions to deliver quality training to prisoners.

## Farming and Forestry

- E. Spring Hill Corrections Facility ●
- F. Waikeria Prison ●
- G. Tongariro/Rangipō Prison ●
- I. Hawke's Bay Regional Prison ●
- J. Manawatu Prison ●
- M. Christchurch Men's Prison ●
- P. Otago Corrections Facility ●
- Q. Invercargill Prison ●



## Horticulture Training and Qualifications

- A. Northland Region Corrections Facility
- B. Auckland Prison
- D. Auckland Region Women's Corrections Facility
- E. Spring Hill Corrections Facility
- F. Waikeria Prison
- G. Tongariro/Rangipō Prison
- H. Whanganui Prison
- M. Christchurch Men's Prison
- N. Christchurch Women's Prison
- O. Rolleston Prison
- P. Otago Corrections Facility