

Social Impact Monitoring
Auckland Region Women's Corrections Facility and
Auckland South Corrections Facility – Kohuora
Annual Monitoring Report 2015



**Auckland Region Women's Corrections Facility and
Auckland South Corrections Facility – Kohuora.**

**Social Impact Monitoring:
Third Annual Report 2015.**

June 2016

The baseline, 2013 and 2014 reports were prepared by Dianne Buchan and Chris Cosslett of Corydon Consultants Ltd. This 2015 report is an update of those reports by Quigley and Watts Ltd, drawing on the 2015 data collected by Corydon Consultants Ltd and on the text and layout of the previous authors. Substantial additions include an analysis of data, chapter summaries and overall assessments. Consequently an Executive Summary is now presented. Finally, all reports have been undertaken in accordance with conditions of designation set by the Board of Inquiry for the construction of the Auckland South Corrections Facility (Kohuora) at Wiri.

Cover design by Rev Mark Beale, Member of the Community Impact Forum

Contents

Executive Summary	1
.....	2
1. Introduction.....	3
1.1 Document deliverables for phases 1 and 2 of the Social Impact Monitoring Plan	4
1.2 Contractual and report changes compared with previous years.....	4
2. Housing and accommodation.....	6
2.1 Rental housing.....	8
2.1.1 <i>HNZC housing waiting lists</i>	8
2.1.2 <i>Private rental housing</i>	9
2.1.3 <i>ASCF construction worker housing and ARWCF employee housing</i>	10
2.1.4 <i>Housing of prisoner families, offenders and Steps to Freedom programme</i>	11
2.2 Overcrowding	13
2.3 Emergency/temporary housing.....	13
2.3.1 <i>Demand for emergency accommodation</i>	13
2.3.2 <i>Long-term residents at caravan parks</i>	14
2.4 Demand for Supported Accommodation Service.....	15
3. Schools and pre-schools.....	16
3.1 Background.....	18
3.2 Number of children enrolled at schools with a caregiver employed or imprisoned at ARWCF	18
3.3 Turnover rates in school rolls	19
3.4 Special needs students	22
3.4.1 <i>Number of special needs students</i>	22
3.4.2 <i>Resource Teacher: Learning and Behaviour Unit (RTLb)</i>	24
3.4.3 <i>Number of special needs of pre-school children</i>	26
3.4.4 <i>Ministry of Education’s Psychological Service for students</i>	27
3.5 Unjustified absence e.g. truancy	29
3.5.1 <i>Truancy incidents</i>	29
3.5.2 <i>Number of truants</i>	29
3.5.3 <i>Referral to Attendance Services</i>	30
3.6 Pre-school occupancy and enrolments	31
4. Local NGO support services	32
4.1 Background.....	32
4.2 General NGO social support services	33
4.2.1 <i>Number of volunteers and number of hours delivered to ARWCF prisoners</i>	33
4.2.2 <i>Service usage of local NGOs</i>	34
4.3 Maori cultural services	36
4.4 Child Travel Fund or Whānau Transport	37
5. Local health services.....	38
5.1 Background.....	39
5.2 Services affected by prisoner health requirements	39
5.2.1 <i>On-site visits by health providers</i>	39
5.2.2 <i>Visits to off-site health providers</i>	40
5.2.3 <i>Mason Clinic inpatients and outpatients</i>	41
5.3 Demands on primary health clinics	42
5.3.1 <i>Numbers of enrolled patients at each clinic</i>	42
5.3.2 <i>Specialist services at Raukura Hauora O Tainui</i>	43
5.4 Stand Children’s Services (formerly Pakuranga Health Camp)	45

5.5	St Johns Ambulance.....	46
5.6	Health services provided to the Korowai Manaaki Youth Justice Facility.....	47
	<i>Table 34: Youth Justice Facility: onsite consultations by health service providers</i>	47
	<i>Table 35: Youth Justice Facility: Off-site treatments (average per month)</i>	47
6.	Local employment and economy.....	48
6.1	Employment opportunities at the Corrections facilities	48
6.1.1	<i>ASCF – Kohuora construction workforce</i>	48
6.2	Employment and training opportunities for ARWCF prisoners	50
6.3	Demand for local goods and services.....	51
7.	Community safety and wellbeing.....	52
7.1	Background.....	53
7.2	Crime rates	53
7.3	Domestic violence	54
7.4	Graffiti and vandalism	55
7.5	Gang presence in the local community.....	55
7.6	Probation services, probation compliance and rehabilitation services	57
7.6.1	<i>Probation services</i>	57
7.6.2	<i>Community Probation Compliance</i>	58
7.6.3	<i>Rehabilitation services</i>	59
7.7	Workload for local police from ARWCF.....	61
7.8.1	<i>Hardship payments</i>	62
7.8.2	<i>Accommodation Supplements</i>	63
7.8.3	<i>Van Participation Programme</i>	63
7.9	Community pride.....	64
7.9.1	<i>Young people’s perceptions of Manurewa</i>	64
7.9.2	<i>Manurewa students transferring to schools outside Manurewa</i>	70
7.9.3	<i>Use of local community facilities</i>	70
7.9.4	<i>Patronage of facilities by ARWCF and ASCF workers</i>	71
7.9.5	<i>Youth membership of community organisations</i>	72
8.	Tangata Whenua.....	73
9.	Transport modes and traffic counts	74
9.1	Background.....	74
9.2	ARWCF staff.....	74
9.3	ASCF – Kohuora construction workforce.....	75
9.4	Visitors to ARWCF.....	76
Appendix 1:	ASCF construction workforce: travel by residential location	78
Appendix 2:	Terms and acronyms used in this report.....	79
Appendix 3:	Services provided by NGOs contributing data to the SIMP monitoring.....	80

Executive Summary

This social impact monitoring report has been prepared in accordance with conditions set by the Board of Inquiry (BOI) in approving the establishment of a new men's Corrections facility, now named Auckland South Corrections Facility – Kohuora (ASCF – Kohuora), adjacent to the Auckland Region Women's Corrections Facility (ARWCF) in Wiri. The purpose of the social impact monitoring report is to identify, quantify and assess any social and cultural effects (both positive and negative) on the community arising from the presence and operation of the two Corrections facilities. The information provided in this report builds on:

- Baseline report (information collated during August to October 2012)
- 2013 Annual Report (data collected from November 2012 to October 2013)
- 2014 Annual Report (data collected from November 2013 to October 2014).

Information for this third annual monitoring report was collected predominantly during November 2014 to April 2015, with most surveys being administered in April. The authors appreciate the time and effort of the various agencies which provided the data.

Unlike previous monitoring reports, this report attempts to analyse data, present chapter summaries and present an overall assessment about whether further study of a potential effect is warranted. Effects have been categorized as either:

- 'No effect', 'potential low effect' or 'potential very low effect'. Therefore unlikely to be worthy of future study unless other information, such as literature review or community concern, warrant it
- 'Potential effect' worthy of future study.

Potential effects of ARWCF operation	Unknown effects of ARWCF operation or ASCF construction	Low or no effects of ARWCF operation or ASCF construction
<p><u>Housing / Accommodation</u> ARWCF has a potential effect on:</p> <ul style="list-style-type: none"> • Emergency / temporary housing in the area • Prisoners' Aid and Rehabilitation Society (referrals for supported accommodation services) <p><u>Schools / Pre-schools</u> ARWCF has a potential effect on:</p> <ul style="list-style-type: none"> • The numbers of children using the Ministry of Education Psychological Services (of children from imprisoned caregivers) <p><u>Local NGO Support Services</u></p> <ul style="list-style-type: none"> • A select group of NGOs who specifically target services to prisoners and their families have potentially experienced an effect by ARWCF <p><u>Local Health Services</u></p> <ul style="list-style-type: none"> • A select group of health service providers have potentially experienced an effect by the ARWCF (and Youth Justice Facility). This includes an off-site provider (Mason Clinic) and those health services providing on-site consultations at ARWCF and the Youth Justice Facility <p><u>Community Safety and Wellbeing</u> ARWCF has had a potential effect on:</p> <ul style="list-style-type: none"> • The workloads of rehabilitation service providers working within the prison • The number of children identified as having a gang association <p><u>Transport modes and traffic counts</u></p> <ul style="list-style-type: none"> • Additional vehicle traffic (from ARWCF staff) 	<p><u>Housing / Accommodation</u> The data neither supports nor refutes whether ARWCF has a potential effect on:</p> <ul style="list-style-type: none"> • HNZC housing waiting lists • Long term residents at caravan parks <p><u>Schools / Pre-schools</u> The data neither supports nor refutes whether ARWCF or prisoner families have a potential effect on:</p> <ul style="list-style-type: none"> • Kindergarten and pre-school occupancy rate. <p><u>Community Safety and Wellbeing</u> The data neither supports nor refutes whether ARWCF has a potential effect on:</p> <ul style="list-style-type: none"> • Local crime rates, community probation compliance or graffiti vandalism • Access to hardship payments or community pride <p><u>Traffic modes and traffic counts</u></p> <ul style="list-style-type: none"> • No data to report <p><u>Tangata Whenua</u> Concerns were raised at the Board of Inquiry about the effect ASCF once operational could have on:</p> <ul style="list-style-type: none"> • The natural environment / landscape including the ability of mana whenua to exercise kaitiakitanga at the site • The cultural identity of local iwi / hapū groups that affiliate to the area including the cultural awareness and understanding of people regularly in the vicinity of ASCF <p>As noted in the 2012 report, all of the indicators agreed at that stage by the Tangata Whenua Committee (TWC) related to the operational phase of ASCF.</p> <p>Unfortunately no baseline data has been collected by the previous contractors and indicators will need to be identified and data collected.</p> <p>It is not yet known what effects the operation of the ASCF may have on local iwi / hapū. During the development of operational policies, procedures and programmes for ASCF, the TWC will be closely consulted to identify potential effects and to design methods and identify data sources to monitor these effects.</p>	<p><u>Housing / Accommodation</u> ARWCF / ASCF have low / no effect on:</p> <ul style="list-style-type: none"> • Private rental housing or owner-occupied housing • Overcrowding <p><u>Schools / Pre-schools</u> ARWCF / ASCF have low / no effect on:</p> <ul style="list-style-type: none"> • School roll numbers, student turnover or the location of where students are transferring to • Number of special needs students or the type of special needs learning students • Referrals to Resource Teacher: Learning Behaviour Units • Pre-school special needs children numbers • The contribution of ARWCF to truancy numbers is low and truancy overall is low in nearly all schools. For an individual school, a small number of truant students (with prisoner parent/s) contribute to the majority of the small truancy issue at that school <p><u>Local NGO Support Services</u> ARWCF / ASCF have low / no effect on:</p> <ul style="list-style-type: none"> • Local child travel fund or whanau transport • Most NGOs who provide services to the population have experienced a low potential effect on their services by ARWCF prisoners or their families <p><u>Local Health Services</u></p> <ul style="list-style-type: none"> • Off-site population health providers who typically service large numbers of people have experienced a low potential effect on their services by ARWCF prisoners or their families. This includes primary health care clinics, Stand Children Services and St John's Ambulance services <p><u>Local Employment and Economy</u></p> <ul style="list-style-type: none"> • Prisoners on release to work programmes from ARWCF have had a very low potential effect on employment opportunities locally <p><u>Community Safety and Wellbeing</u> ARWCF / ASCF have low / no effect on:</p> <ul style="list-style-type: none"> • Domestic violence services • The number of parolees or offenders on release conditions • Police workload from the ARWCF site itself • Patronage of local community facilities by staff

1. Introduction

This social impact monitoring report has been prepared in accordance with conditions set by the Board of Inquiry (BOI) in approving the establishment of a new men's Corrections facility, now named Auckland South Corrections Facility – Kohuora (ASCF – Kohuora), adjacent to the Auckland Region Women's Corrections Facility (ARWCF) in Wiri. The purpose of the social impact monitoring report is to identify, quantify and assess any social and cultural effects (both positive and negative) on the community arising from the presence and operation of the two Corrections facilities. The information provided in this report builds on:

- Baseline report (information collated during August to October 2012)
- 2013 Annual Report (data collected from November 2012 to October 2013)
- 2014 Annual Report (data collected from November 2013 to October 2014).

Previous reports are available at www.corrections.govt.nz. The baseline report presents social data regarding the local community of Manurewa and Manukau City Centre as well as specific facilities outside of that area. The 2013 Annual Report and the 2014 Annual Report provide social information on the community during the operation of the ARWCF and the construction phase of the ASCF – Kohuora, which began at the end of 2012. The construction of the ASCF – Kohuora was completed in January 2015 and commenced operations with the first prisoners in May 2015.

In accordance with the BOI decision, a social impact monitoring report is to be prepared annually with participation and input from the Community Impact Forum and the Tangata Whenua Committee¹. If the monitoring identifies effects that are attributable to the Corrections facilities, these committees can independently or collectively consider ways to address any social and cultural effects. The Community Impact Forum and the Tangata Whenua Committee can then recommend projects to the Social Impact Fund Allocation Committee in order to avoid, remedy and/or mitigate identified adverse effects².

¹ Both of these committees were established to consider the social and cultural effects on the community of the ASCF – Kohuora and ARWCF.

² A dedicated fund of \$250,000 per annum, accumulating to a maximum of \$500,000, was established as a condition of the consent set by the Board of Inquiry.

1.1 Document deliverables for phases 1 and 2 of the Social Impact Monitoring Plan

Stage	Completed
Design draft Social Impact Monitoring Plan indicators table, survey questionnaires and data recording forms	August 2012
Undertake baseline survey and write up results to be posted on the Department of Corrections' website	February 2013
Review SIMP indicators table, survey questionnaires and data recording forms in light of experience with baseline monitoring	January 2013
Undertake mid-year monitoring to provide mid-period measure and to check data recording forms and processes are working	June 2013
Undertake annual monitoring survey	November 2013
Prepare first Annual Monitoring Report based on baseline, mid-year and end of year data. Publish in booklet form with on-line copy.	February 2014
Fine-tune SIMP in preparation for second year of monitoring	March 2014
Second annual report	February 2015
Fine-tune SIMP in preparation for third year of monitoring	April 2015
Third Annual Report (this report)	June 2016

1.2 Contractual and report changes compared with previous years

In May 2015, the Department of Corrections placed a Request for Tender on the Government Electronic Tender Service to identify the provider of these services for the next three years. Over the next nine months, the Department of Corrections moved through the necessary tender steps and appointed Quigley and Watts Ltd on 11 April 2016. The time taken to appoint a provider has meant that the October 2015 data collection has not occurred. While there is still adequate data to produce an Annual Monitoring Report, there are data gaps compared with previous years. In the longer term, this will have little bearing on being able to identify the effects of the two prisons as Quigley and Watts Ltd are developing a modified framework for attributing effects, based on the existing work.

Therefore, information for this third annual monitoring report was collected predominantly during November 2014 to April 2015, with most surveys being administered in April. In some cases, surveys were administered in a different month. For example, the education sector used March for its monitoring month to avoid school holidays. A three- or six-month period was used for agencies that experience significant monthly or seasonal fluctuations such that one month of monitoring would not produce a true reflection of events. In such cases, some agencies opted to provide a full six months of data (November to April), and others provided three months of data (April to June). In all cases, the data has been averaged to produce a "typical" month. Sources of information updated for 2015 in this report are:

- ARWCF Health Services; Local Support Services; Rehabilitation Services; Training and Education Support Services
- Barfoot and Thomson Ltd
- Clendon Park Primary school
- Homai Primary school
- FS Everglade Babies pre-school
- FS Everglade pre-school

- FS Wattledowns pre-school
- CK Wattledowns pre-school
- Topkids Weymouth pre-school
- CK Manurewa pre-school
- FS Maich pre-school
- ABC Manurewa Central pre-school
- Korowai Manaaki Youth Justice Facility
- Lovegrove Realty Ltd
- Manurewa High School
- Manurewa Marae Health Clinic
- Mason Clinic
- Probation services
- Pūkaki ki Te Akitai
- St Elizabeths Anglican Church (Rev Mark Beale)
- Sisters of Mercy (Sister Margaret Martin)
- Stand Children’s Services (formerly Pakuranga Health Camp)
- Takanini Caravan Park
- Te Whakaora Tangata.

These cover government agencies, facilities managers, commercial operators, NGOs, schools, pre-schools and health clinics. We would like to take this opportunity to thank all those who contributed information. Without their participation, this monitoring would not be possible.

Note the data for the two 2013 and two 2014 monitoring periods has been averaged (by calculating the *mean value* to produce a single figure for each year). This is in contrast to this report where only one monitoring period is available.

A list of acronyms and terms commonly used in this report is contained in Appendix 2.

A description of the activities undertaken by the NGOs and other organisations participating in the monitoring programme is contained in Appendix 3.

2. Housing and accommodation

Section summary – what does the data say about housing and accommodation in relation to Corrections facilities

HNZC housing waiting lists: The number of requests registered for A and B waiting lists for HNZC housing in Manurewa has increased steadily since 2012 through to 2014. Substantial increases have also occurred across South Auckland and Auckland generally, reflecting an Auckland wide issue. No data links Corrections staff, prisoner families or ex-prisoners to HNZC wait lists. Therefore the HNZC data does not support or refute a hypothesis that the prisons potentially affect HNZC housing lists in the local area.

Private rental housing: There was an increase in demand for private rental accommodation in 2013 which then dropped back in the following years (2014 and 2015). No data links Corrections staff or ex-prisoners to renting of private housing in the local area. Therefore the data does not support or refute a hypothesis that the prisons potentially effect the renting of private housing in the local area.

ASCF construction worker housing: Of the 256 workers inducted onto the worksite during 2013 only 10 (4%) had moved to be close to the site. Seventy nine (30%) had been resident in the local area before getting work at the site. By 2014, people who lived locally already made up 93% of new site workers, while the proportion moving to be close to the site remained low (8%). These figures support the hypothesis that the potential effect of the workforce on demand for rental housing is low relative to the total housing stock.

ARWCF staff housing: About one third of staff employed at the ARWCF live in the local area and this absolute number has increased since 2012 from 61 to 77 in 2014. Of those 77, the majority (41) said they had been living in the area prior to starting work at the prison while 26 moved into the local area to be close to the prison. About half of those 77 (49%) are in private rental accommodation, 39% are owner occupiers and 7 (9%) are in HNZC accommodation. Over three years, and with most previously living in the area, this translates into a low potential effect by ARWCF staff on private rental housing, HNZC housing and owner occupier housing in the local area.

Housing of prisoner families: Of 384 prisoners, 32 prisoners had next of kin already resident in the local area (8% of all prisoners, also similar in 2012 and 2013). Seven prisoners had next of kin move into the local area (2% of all prisoners), a lower percentage than previous years and six of those families moved into private rental housing. This data supports the hypothesis that housing of prisoner families has a very low potential effect on annual demand for housing in the local area.

Ex-prisoner housing in the local area: Over a five month period, three ex-prisoners were released from ARWCF and placed in private rental accommodation in Manurewa. To put this into perspective, Steps to Freedom data (financial support to probationers and people who have served their sentences) from Manurewa Work and Income averaged 121 applications per year. Applicants to the Steps to Freedom programme come from any prison in New Zealand and are several orders of magnitude higher for the local area compared with offender release numbers from ARWCF into the local area. This data supports the hypothesis that housing of ex-prisoners has a very low potential effect on annual demand for housing in the local area.

Overcrowding: Overcrowding affected one of the 23 families that moved into the local area (to be close to a prisoner) over the combined three year period 2012 to 2014. This data supports the hypothesis that ARWCF has a very low potential effect on overcrowding of housing in the local area.

Emergency/temporary housing: About 14% of emergency/temporary housing (between 3 and 5 beds) at James Liston House was occupied by prisoners released from ARWCF, averaged over the three years 2012, 2013 and 2014. No prisoners (or people who were next of kin of prisoners) were known to be staying at the South Auckland Family Refuge over the three year period. The known average across both facilities across all three years was therefore 10% of all available emergency housing being occupied by a released prisoner from ARWCF. This is not an inconsequential percentage, and is likely to be at the low end of the estimate due to South Auckland Family Refuge being unaware of prisoner status or not. This data supports the hypothesis that housing of ex-prisoners has a potential effect on emergency/temporary housing in the local area.

Long term residents at caravan parks: Data about whether ex-prisoners or construction workers are residents at the caravan parks is unknown. The number of requests for accommodation declined due to lack of capacity has remained relatively constant over the four years 2012-2015, at about 25 per month across the two parks. One park runs at 100 percent capacity and the other is typically at about 90% capacity. Therefore the data does not support or refute a hypothesis that the prisons have a potential effect on long term residents at the local caravan parks.

Demand for supported accommodation services: The number of referrals for ARWCF released prisoners to Prisoners' Aid and Rehabilitation Society (PARS) Auckland (from all prisons in New Zealand) shows a continual decline. Similarly large declines in referrals of ARWCF ex-prisoners for the number of Supported Accommodation Services (to 0.3 per month in 2014) and absolute numbers referred for mainstream accommodation (to 39 per month in 2014) were seen. Regardless of the decline, this data does support the hypothesis that ex-prisoners from ARWCF have a potential effect the number of referrals to PARS.

Overall assessment: *The data supports the hypothesis that the ASCF construction workforce and AREWCF had a low potential effect on private rental housing, owner occupied housing or overcrowding. This is due to the low numbers of ASCF construction staff moving to the local area, the low number of staff at ARWCF moving to the local area, the very low number of prisoners released to the local area, very low numbers of prisoner families moving into the local area and very low rates of overcrowding amongst prisoner families. However prisoners constitute at least 10 percent of temporary/emergency bed users and ARWCF ex-prisoners are referred for supported accommodation services from Prisoners' Aid and Rehabilitation Society. Such data supports a hypothesis that ARWCF has a potential effect on emergency/temporary housing in the area and PARS. Data neither supports nor refutes the role of ARWCF and ASCF on HNZA waiting lists or long term residents at caravan parks.*

2.1 Rental housing

Current levels of demand for rental housing in Manurewa / Counties Manukau were determined by obtaining information on the state and private rental housing markets.

2.1.1 HNZC housing waiting lists

There is no 2015 data to update this section beyond the 2014 report.

The number of requests registered on the A and B waiting lists for HNZC housing in Manurewa has increased steadily since the baseline measurement in 2012. During 2013 the average monthly figure was 160. In 2014, the average monthly figure was 304, an increase of 90% over 2013.

This trend holds true for the whole of South Auckland, which experienced an 83% increase in the average monthly total between 2013 and 2014. Waiting lists have also continued to increase throughout the entire monitoring period for Auckland as a whole. Auckland recorded an increase of 34% between 2013 (monthly average) and 2014. The increases in waiting list figures closely match the increases in wait-list as percentage of available housing stock figures.

Over the one year to September 2014, HNZC constructed 19 new housing units in Manurewa. During the same period the stock available across the whole of *South Auckland* increased by 68 units. Across Auckland as a whole, however, there was an overall *reduction* of 437 units during the same period.

Note that since 14 April 2014, MSD has been assigned responsibility for assessing people for social housing eligibility and managing the social housing wait-list. MSD manages applications for social housing and refers people on the waitlist to social housing providers. The Government has also opened up the income-related rent subsidy to more housing providers, with the result that people on the wait-list for social housing can be referred to either HNZC or to a registered community housing provider.

Table 1: HNZC housing: Priority A and B applicants on waiting list

Area	Number on waiting list			Wait list as % of total HNZC stock in area		
	2012 ³	2013 ⁴	2014 ⁵	2012	2013	2014 ⁵
Manurewa	141	160	304	4.6%	5.1%	9.5%
South Auckland (incl. Manurewa, Mangere – Otahuhu, Otara – Papatoetoe, Papakura)	662	676	1,240	5.1%	5.3%	9.6%
Auckland	1,620	2,381	3,187	5.3%	7.8%	10.5%

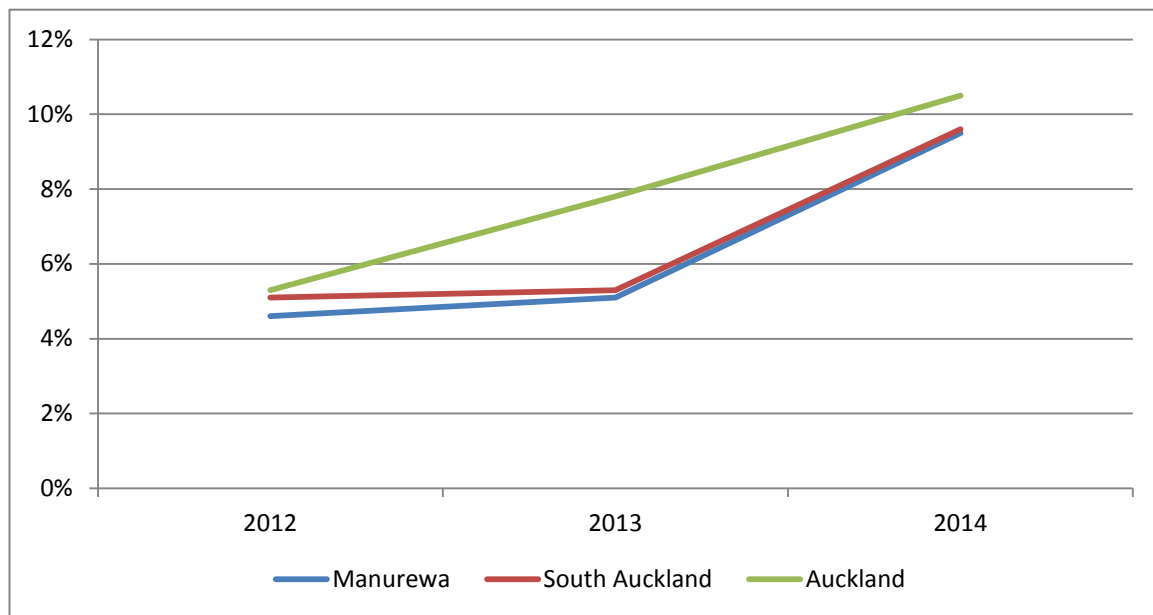
Source: Housing stock info from HNZC. Wait-list info from MSD.

³ As at 31 October 2012

⁴ Average of mid-year and annual 2013 figures

⁵ Average of mid-year and annual 2014 figures.

Graph 1: Wait-list as a percentage of total HNZC stock in each area



2.1.2 Private rental housing

Two of the largest private rental agencies in Manurewa are participating in the Social Impact Monitoring Programme data collection. The number of residential properties on agency books remained constant between 2013 to 2014, but halved in 2015 (with only one agent's data). Overall, Agencies experienced an increase in total applications for private rental accommodation in 2013 compared with 2012, which then declined again in 2014 to levels lower than those in 2012. There has been a modest increase in 2015 again (data from one agent only).

The increase in the number of applications received in 2013 was largely attributable to people seeking to move into Manurewa from elsewhere. While the number of applications fluctuated, the number of homes available for rent remained static therefore the extent of **unmet need** (for both locals seeking to move within Manurewa and people wanting to move into the area from elsewhere) must have peaked along with the demand.

Table 2: Applications for Private Rental Housing (average per month)

Application type	2012	2013	2014 ⁶	2015 ⁷
Real Estate Agency Number	1 and 2 combined	1⁸ and 2⁶ combined	1 and 2 combined	Agency 2 only
Residential properties on agency books that are available for rent within the next four week period	Not asked	68	59	27
Applications received from Manurewa residents seeking to move to another house within Manurewa	162	78	69	84
Applications received from people seeking to move into Manurewa	16	174	26	52
Total applications received over the monitoring period	178	252	93	136

⁶ Average of April and Oct data. Note the figures for the two agents cannot be added together because some clients register with both agencies.

⁷ April data only. Only 1 agent completed data.

⁸ Includes April 2013 data only.

The above table is based on averages and disguises the significant rise in applications received from people seeking to move into the area in early 2013 (data recorded for the month of April). The extent to which this peak was attributable to workers employed on the ASCF construction site is unclear since the agencies do not ask the reason why applicants are seeking to move to Manurewa. However one agency noted that “one or two” of these applicants were *known* to be working on the ASCF construction. Note that agent 1 did not provide data in October 2013 and one agent did not supply data in 2015.

2.1.3 ASCF construction worker housing and ARWCF employee housing

There is no 2015 data to update this section beyond the 2014 report.

2.1.3.1 ASCF Construction worker housing

The actual number of local workers employed during the construction of the ASCF – Kohuora is not known because workers at the site are continually turning over as skill requirements change at the site. Some of those recorded during the first two monitoring periods were still engaged on site, but only newly-inducted workers complete the construction workforce survey. Table 5 shows that the proportion of new workers moving into their own rental accommodation has fallen overall, while the proportion living with others has increased. This can be at least in part attributed to the workers’ expectations about the duration of employment available on the site. As shown in Table 36 in section 6.1.1, 42% expected to be employed for 3 months or less and 20% expected their employment to last three to six months. It can be assumed that these workers did not consider it worthwhile finding their own local rental accommodation for such a short period.

The greater number of people living with others may also be attributable in part to the excess of demand over supply of rental accommodation, as indicated in tables 1 and 2.

Table 5: Type of accommodation used by new ASCF construction workers living in Manurewa / Manukau City centre (number and percentage of local workers in each type of accommodation)

Type of accommodation	Local workers inducted Nov 2012 – Oct 2013	Local workers inducted Nov 2013 – Oct 2014
Rental – Private landlord	102 (40%)	39 (26%)
Rental – HNZA	24 (9%)	18 (12%)
Moved into a home rented by an existing resident	7 (3%)	18 (12%)
Other	10 (4%)	3 (2%) ⁹
Owner-occupied home	104 (41%)	61 (40%)
No response	9 (4%)	12 (8%)
Total	256	151

Those construction workers living in the local area were asked whether they had moved to their current home in order to be close to the construction site. Of the 151 local workers inducted during 2014 only 10 (7.5%) had moved to be close to the site (17 non-respondents were excluded from this calculation). The other 124 (92.5%) had been resident in the local area before getting work at the site. In 2013, at least 79 workers¹⁰ employed at the ASCF site had been living in the local area prior to obtaining work at the site, while only 10 (out of 256) locally-housed construction workers said they had moved to the local area to be closer to work at the site. These figures

⁹ In 2014, ‘Other’ consisted of boarding.

¹⁰ The question of how many of the locally-based workers were living in the local area prior to employment at the site was introduced part-way through 2013 so the actual number of local workers will be higher.

indicate that the impact of the workforce on demand for rental housing continues to be low relative to the total housing stock.

2.1.3.2 ARWCF employee housing

Most of the staff employed at the ARWCF live in the local area and this proportion has increased since 2012 (31% to 37%). The proportion living in other parts of Counties Manukau has fluctuated throughout the 2012-2014 with no apparent trend. The proportion living in other parts of Auckland City and outside Auckland City Boundary (combined) has declined from 40% to 37% to 28% over the three years.

Table 3: Residential location of ARWCF employees (percentages of respondents, not total staff)

Location	2012	2013	2014
Local area (Manurewa/Manukau City Centre)	61 (31%)	76 (37%)	77 (37%)
Other parts of Counties Manukau	56 (29%)	38 (18%)	66 (32%)
Other parts of Auckland City ¹¹	67 (34%)	58 (28%)	44 (21%)
Outside Auckland City boundary ¹²	11 (6%)	18 (9%)	14 (7%)
Location not stated	0	15 (7%)	8 (4%)
Total	195	205	209

In 2014, of the 77 staff residing in the local area, 26 said they had moved to Manurewa to be closer to work (an increase from the 11 recorded in 2013). Forty-one said they had been living in the area prior to starting work at the prison (compared with 59 in 2013).

Of the 77 employees who live locally in 2014, 38 live in private rental housing and seven in HNZC rental homes. The proportion of local staff who own their own homes rose significantly in 2013 relative to 2012 (55% compared with 21%), but declined in 2014 to 39%.

Table 4: Type of accommodation occupied by ARWCF employees living in Manurewa / Manukau City Centre (number and percentage of local staff)

Type of rental	2012	2013	2014
Private rental	39 (64%)	29 (38%)	38 (49%)
HNZC rental	3 (5%)	4 (5%)	7 (9%)
Other type of rental	6 (10%)	1 (1%)	1 (1%)
Owner occupied	13 (21%)	42 (55%)	30 (39%)
Total	61	76	77¹³

2.1.4 Housing of prisoner families, offenders and Steps to Freedom programme

There is no 2015 data to update this section beyond the 2014 report.

Of the 390 prisoners at ARWCF, 384 (98.5%) responded to the survey about the location and housing arrangements of their next of kin. Of these 384 prisoners, 39 (10%) had next of kin living in

¹¹ Locations for 2014 included Central Auckland (25 respondents), North Auckland (7) and West Auckland (12).

¹² Locations for 2014 included Franklin District/Waikato (12) and other areas outside the Auckland Region (2).

¹³ One person who lived in the local area did not specify what type of accommodation they lived in.

Manurewa or Manukau City Centre (an increase over the numbers recorded in 2013 and 2012). Of these, seven (2%) had moved to Manurewa to be closer to the prisoner. The other 32 were already residents of Manurewa. Of the seven families who had moved to the area, at least six were living in private rental housing. The remaining prisoner did not know in what form of rental accommodation her family was living. The effect of prisoner families on demand for rental housing in the local area continues to be low.

Table 6: Location and accommodation of ARWCF prisoner families

Monitoring period	Number of respondents to question	Next of kin live in Manurewa?		Moved to Manurewa to be close to the prisoner?		Type of accommodation (those who have moved to Manurewa)		
		Yes	No	Yes	No, lived in Manurewa already	Private rental	HNZC	Other / DK
2012	201	23 (11%)	178 (89%)	10 (5%)	13 (7%)	8	2	0
2013	340	31 (9%)	309 (91%)	6 (2%)	25 (7%)	4	2	0
2014	384	39 (10%)	345 (90%)	7 (2%)	32 (8%)	6	0	1

Community Probation provided data for the period 1 June to 31 October 2014 (five months). During this time, three offenders were released from ARWCF and placed in rental accommodation in Manurewa. All three of these people were placed in private accommodation, none in HNZC accommodation.

As a further indicator of the effect of the Corrections facilities on the rental housing market, Work and Income NZ provided information about the number of Accommodation Supplement applications received by its Manurewa service centre from people on the Steps to Freedom Programme (STF)¹⁴. This information is collected quarterly.

There has been a reduction in the number of applications for Accommodation Supplement grants processed in the Manurewa service centre and a corresponding reduction in the number of applications from people on the Steps to Freedom programme. This was also the case between 2012 and 2013. As in previous monitoring periods, Work and Income NZ was unable to identify which prisons these people had been released from and so the extent to which the demand is attributable to ARWCF is unknown.

Table 7: Manurewa Work and Income Service Centre: Accommodation Supplement (AS) Grants and Special Needs Grants (SNG) for Steps to Freedom (STF)

Monitoring period	Total AS applications received per month (average)	Total AS grants per month (average)	Total SNG STF applications per month (average)	Total SNG STF grants per month (average)
2012	371.6	340.6	17	16
2013	324	295	11.6	10.3
2014	290.8	271.1	4	4

¹⁴ The Steps to Freedom Programme provides financial support to probationers and people who have served their sentences to assist their reintegration into society.

2.2 Overcrowding

There is no 2015 data to update this section beyond the 2014 report.

In 2014, only seven families are known to have moved to Manurewa to be close to a prisoner at ARWCF. Of these, two have moved in with another family (compared with three in 2013 and seven in 2012). The impact on the size of households is shown in the following table. Out of the 23 families who moved to Manurewa to be close to a prisoner (2012, 2013 and 2014 combined), there is one likely case of overcrowding (one household reported 17 children and four adults).

Table 8: Families of ARWCF prisoners relocating to Manurewa and living with existing residents

Year	Moved to Manurewa to be close to prisoner	Living with another family	Number of occupants per house				
			< 5	5 – 7	8 – 10	11 or more	No response
2012	10	7	2	1	-	-	4
2013	6	3	2	-	1	-	-
2014	7	2	1	-	-	1	-

2.3 Emergency/temporary housing

2.3.1 Demand for emergency accommodation

There is no 2015 data to update this section beyond the 2014 report.

James Liston Hostel (formerly the Auckland Emergency Night Shelter) in Central Auckland was restructured during 2013. The hostel provides two types of accommodation: permanent beds which are directly managed by the hostel and emergency beds which are provided by the hostel for clients of Auckland City Mission and Lifewise Trust. There is an informal limit on length of stay in the permanent beds of 3-6 months.

As shown below, three offenders released from ARWCF (either on probation or having served their sentences) were accommodated in the permanent beds during October 2014, compared with four in April 2014 and five in October 2013. No one known to be visiting an ARWCF prisoner was accommodated.

The hostel holds eight emergency beds (these are allocated based on referrals from the two agencies noted above). During the 12 months to 31 October 2014, occupancy of the emergency beds was 79%. It is unknown whether any of those using the emergency beds were offenders having been released from ARWCF or people visiting ARWCF prisoners.

The South Auckland Family Refuge provided an average of 421 bed-nights per month during 2014, compared with 412 in October 2013. There was significant increase in occupancy between April and October 2014: 87%. The refuge was unaware of any occupants being associated with prisoners at the ARWCF.

Table 9: Use of emergency accommodation by prisoners released from ARWCF

Facility	Total beds and (bed-nights)			Number of people released from ARWCF or associated with prisoners who are occupying a bed (percent)		
	Oct 2013	Apr 2014	Oct 2014	Oct 2013	Apr 2014	Oct 2014
James Liston Hostel	30 (930)	27 (800)	26 (794)	5 (16%)	4 (15%)	3 (12%)
South Auckland Family Refuge	13 (412)	10 (293)	18 (549)	Unaware of occupants being ex-prisoners or associated with prisoners from ARWCF		

2.3.2 Long-term residents at caravan parks

The operator of Meadowcourt Caravan Park withdrew from participation in the monitoring programme prior to the October 2014 monitoring period. For the foreseeable future, Takanini will be the only caravan park monitored.

Prior to withdrawing from the survey, Meadowcourt reported being consistently at maximum capacity. Two workers at the ASCF – Kohuora construction site were accommodated at Meadowcourt in the latter period of 2013 and none of the residents over the two year period were known to have moved to the site to be close to a prisoner at ARWCF. Both parks recorded a significant increase in the number of people turned away during 2014. The manager of Takanini attributed this to an increasing shortage of affordable accommodation in Auckland as a whole.

Table 10: Caravan park occupancy (per month)

	Meadowcourt Caravan Park ¹⁵			Takanini Caravan Park			
	2012	Apr 2013	Oct 2013	2012	Oct 2013	Oct 2014	Apr 2015
Total number of sites (including cabins and flats)	138	138	138	142	142	142	215 ¹⁶
Average occupancy rate of sites	100%	100%	100%	85%	95%	95%	90%
Number of new arrivals (average per month)	10	4	10 ¹⁷	15	16	10	9
Number of requests for accommodation declined due to lack of capacity (average per month)	16.7	25	16 ¹⁷	10.3	15	50 ¹⁷	21
Number of occupants who are living in the camping ground to be close to a prisoner at ARWCF	0	0	Unknown	Unknown	Unknown	Unknown	Unknown
Number of occupants working on the construction of the ASCF – Kohuora	0	0	Unknown	Unknown	2	Unknown	Unknown

¹⁵ Meadowcourt has now withdrawn from the monitoring programme.

¹⁶ 142 was the number of caravan sites only. This total includes 73 cabins and flats.

¹⁷ Estimated figure.

2.4 Demand for Supported Accommodation Service

There is no 2015 data to update this section beyond the 2014 report.

The number of referrals to Prisoners' Aid and Rehabilitation Society (PARS) Auckland from all prisons in New Zealand for the Supported Accommodation Service for released prisoners (on parole or having served their sentences) continued to decline. Fifteen referrals per month were recorded during 2012, 12 during 2013 and ten in 2014. Of these ten, referrals from ARWCF comprised only 3% (two out of 61 over a six month period).

The number of referrals PARS received from all prisons in the northern region for mainstream accommodation and other housing-related assistance (such as property maintenance and mortgage advice) also dropped significantly during the latest monitoring period, relative to both previous monitoring periods – down by 66% compared with 2013 and by 87% compared with 2012.

In line with this trend, the mainstream accommodation referrals originating from ARWCF also fell (by about 50% compared with 2013). In turn, because of the substantial drop in referrals overall, the proportion of the total from ARWCF referrals increased (despite a large drop in absolute numbers).

Table 11: Referrals for PARS accommodation support services (monthly average)

Type of Accommodation Support	Monthly total number of referrals ¹⁸			Monthly average number of ARWCF referrals (percentage of total referrals)		
	2012 (Nov – Apr 13)	2013 (May – Oct)	2014 (May – Oct)	2012 (Nov – Apr 13)	2013 (May – Oct)	2014 (May – Oct)
Supported Accommodation Service	14.7	12.2	10	2.7 (18%)	1.7 (14%)	0.3 (3%)
Mainstream Accommodation	839.2	315.2	107.7	87.3 (10%)	76.5 (24%)	39.2 (37%)

¹⁸ For Supported Accommodation Service, "total number" refers to all prisons in New Zealand. For Mainstream Accommodation, "total number" refers to all prisons in the Northern Region.

3. Schools and pre-schools

Section summary – what does the data say about schools and pre-schools in relation to Corrections facilities

Number of children enrolled at schools with a caregiver employed or imprisoned at ARWCF: In 2014, the total number of children (of ARWCF prisoners) enrolled in the participating schools were 16 (twelve school-age children and four pre-school children) according to the ARWCF prisoner survey. This equates to 1 in 400 students when compared with the total rolls of the monitored schools. Regarding school data, schools did not typically know if a child's caregiver was employed by a prison or if the caregiver was in prison. The exception was Clendon Park Primary which reported 8 students in 2014 (2 with employed, 6 with imprisoned) and 5 students in 2015 (2 with employed, 3 with imprisoned). With a school roll of 580 in 2015 at Clendon Park Primary alone, these numbers represent about 1 in 100 students. Across the total area and at Clendon Park School this data supports the hypothesis that ARWCF has a very low potential effect on local school rolls.

Student turnover (in and out) of schools: Unlike the seven other schools in the area, two schools experienced a substantial percentage increase (Homai Primary) and absolute increase (James Cook High) of student turnover in 2013. This timing coincided with the construction of ASCF. While the construction workforce was known to have a short tenure of employment, most of the workforce was locally sourced. Together with the fact that seven schools did not experience an increase in student turnover, this data supports the hypothesis that the potential workforce effect on student turnover was very low or low.

Location of students transferring from participating schools: No obvious trend exists between 2012 and 2015 regarding the location local students were moving to as they transferred from local schools. The relevance to the two prisons is unclear. This data neither supports nor refutes a hypothesis that the two prisons have a potential effect on the location where students who are transferring from the local area move to.

Number of special needs students: While the proportion of children at some of the schools who require special needs teaching is substantial, and increasing (for six of the nine schools). Of the participating schools who were able to identify whether students with special needs had a caregiver imprisoned in ARWCF, the proportions were less than one in a hundred. This data supports the hypothesis that ARWCF has a very low potential effect on the numbers of special needs students in the local area.

Type of special learning needs: No trend can be seen in type of special learning needs by the small number of students from imprisoned caregivers. This data neither supports nor refutes the hypothesis that ARWCF affects the type of special learning needs of students. However, given the number of special needs students is very low, the potential effect ARWCF has on the type of special needs students is also hypothesised to be very low.

Referrals to Resource Teacher: Learning and Behaviour units: RTLB units support students, teachers and families when children are having problems with either learning or behaviour. The total number of referrals to the unit continues to rise (across all 32 schools supported in Manurewa), with approximately 240 referrals over a six month monitoring period. The number of RTLB students known to have a caregiver at ARWCF was 2, which is less than 1 in 100 referrals. Therefore this data supports the hypothesis that ARWCF has a very low potential effect on the number of referrals to RTLB units.

Number of special needs children in preschool: None of the 42 children with special needs were known to have a caregiver in ARWCF. This data supports the hypothesis that ARWCF has no potential to affect the number of special needs children in preschools.

Ministry of Education Psychological Services for students: In 2014, between 9 and 10% of children accessing the Psychological Services (from Manurewa and Manukau) were known to have a caregiver in prison at ARWCF. This is a notable percentage in a service where the total number of students accessing services is declining (between 2012 and 2014). This data supports the hypothesis that ARWCF has a potential effect on the numbers of students accessing Psychological Services in the local area.

Truancy: Taking the three years of Police truancy data together, 3 of 138 truants were known to have an imprisoned caregiver from ARWCF. This data shows that the level truancy that is attributable to students who have a caregiver imprisoned at ARWCF is low overall. However, all three of the students considered truant at one school in 2015 had a caregiver at ARWCF. The implication is that while total number (and proportions) of truants is very low at most schools and truancy proportions are low overall (by students with caregivers at ARWCF). For an individual school a small number of truant students (with prisoner parent/s) contribute the majority of the small truancy issue at that school.

Kindergarten and pre-school occupancy: Kindergarten occupancy has remained near 100% capacity throughout the 2013-2014 monitoring period. Other pre-school occupancy was stable at 85% throughout 2013-2015. None of the centres know of any children who have a caregiver imprisoned at ARWCF (or working at the prisons). Therefore this data neither supports nor refutes the hypothesis that children of ARWCF prisoners or of staff working at the prison have a potential effect on kindergarten and pre-school occupancy in the local area.

Overall assessment: *It is hypothesised that ARWCF has a potential effect on the numbers of children using the Ministry of Education Psychological Services (of children from imprisoned caregivers). It is hypothesised that the potential effect is low or very low for student roll numbers, student turnover, number of special needs students, type of special needs learning, and referrals to RTLB units. There is no hypothesised relationship or no data to support a hypothesis of a potential effect between ARWCF and the number of pre-school special needs children, the location of where students are transferring to, nor kindergarten and pre-school rolls. The contribution of ARWCF to truancy numbers is low overall and low in nearly all schools. For an individual school, it is hypothesised that a small number of truant students with imprisoned caregivers potentially contributes to the majority of the low rates of truancy at that school.*

3.1 Background

There are 30 schools and 83 pre-schools in Manurewa. Nine schools and 17 pre-schools were selected in 2012 as indicator schools for the study. Nine schools¹⁹ participated in the 2014 monitoring, together with seven kindergartens and eight independent pre-school centres, but just three schools and 8 pre-school facilities participated in March 2015.

Table 12: Total roll of participating schools

School	Sept 2013	Sept 2014	Change	Mar 2015	Change ²⁰
Clendon Park Primary	559	592	+6%	580	+4%
Greenmeadows Intermediate	395	345	-13%	-	-
Homai Primary	279	304	+9%	256	-8%
James Cook High	1,246	1,263	+1%	-	-
Manurewa High	1,775	1,863	+5%	1,982	+12%
Manurewa Intermediate	689	655 ²¹	-5%	-	-
Rongomai Primary	216	186	-14%	-	-
Waimahia Intermediate	293	247	-16%	-	-
Wiri Central	476	451	-5%	-	-
Total	5,928	5,906	-0.4%	-	-

-: Data not available.

3.2 Number of children enrolled at schools with a caregiver employed or imprisoned at ARWCF

From 2014, a new question was added to the ARWCF prisoners' questionnaire, asking whether those families who had moved to the area in order to be close to a prisoner had children enrolled at local schools. Of the seven families that had moved to the area, there were 16 children (12 school age and 4 preschool) who attended in the local area. This equates to 1 in 400 students when compared with the total rolls of the monitored schools.

Schools were asked how many of their students had caregivers who were either employed at or imprisoned in the ARWCF. Most did not know. One school (Clendon Park Primary) did know of two children who had caregivers working at ARWCF, and six with caregivers who were prisoners in 2014. In 2015, this remained constant at 2 students with a caregiver working at either of the two prisons, but the number of students with a caregiver at ARWCF in 2015 halved to 3.

¹⁹ The participating schools are Clendon Park Primary, Homai Primary, Wiri Central, Rongomai Primary, Greenmeadows Intermediate, Waimahia Intermediate, Manurewa High and James Cook High. Waimahia Intermediate joined the monitoring in September 2013. Manurewa Intermediate withdrew from the monitoring programme following the March 2014 monitoring period.

²⁰ From 2013 to 2015

²¹ Figure for March: September data not supplied.

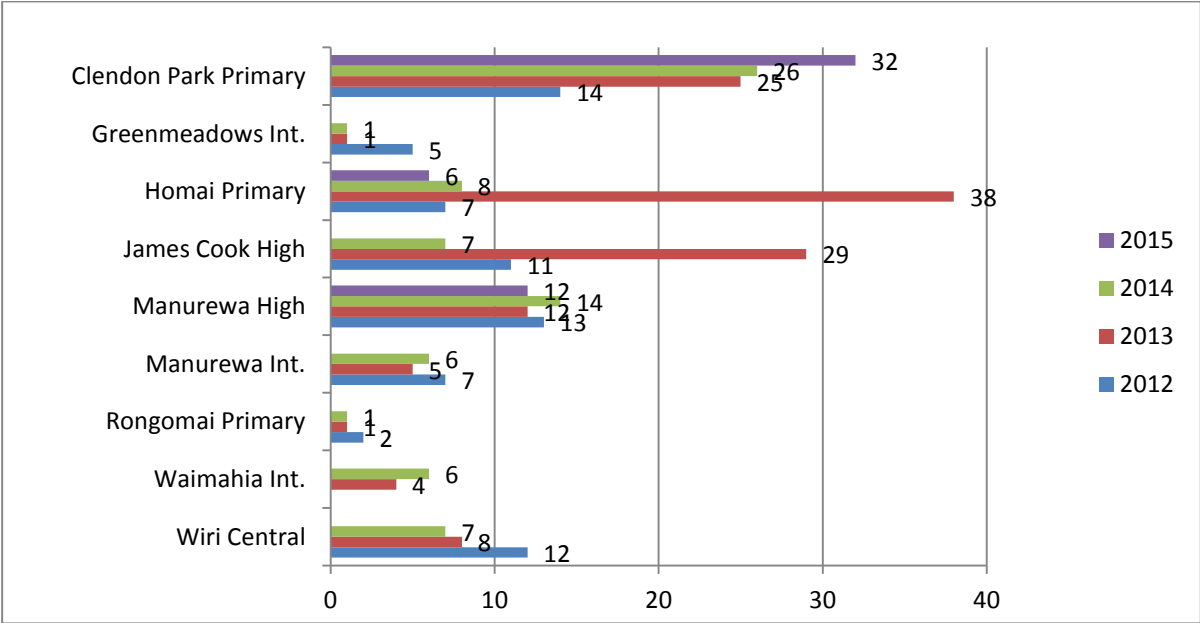
3.3 Turnover rates in school rolls

New enrolments *from* other schools and transfers from the participating schools *to* other schools are shown in the graphs below. In both cases, the SIMP monitoring reveals a spike in 2013, which by 2014 had fallen back to 2012 levels. In 2014, the number of new enrolments (monthly average) across the nine participating schools was 75 (compared with 120 in 2013 and 71 in 2012) while the number transferring from these schools to other schools was 65. The collective roll of the 9 participating schools (averaged between the two monitoring months of March and September) was 5,895 in 2014, compared with 5,960 in 2013. This represents a 1% decline in the total school roll across the nine participating schools between the two years.

Several schools stand out in the graph. James Cook High and Homai Primary both experienced a spike in enrolments in 2013, but in 2014 the figures dropped back to be comparable to those recorded in 2012. Clendon Park Primary, on the other hand, experienced an increase in enrolments in 2013, which was matched in 2014.

Most schools were unable to say how many of the new enrolments were children with a caregiver who was either employed at one of the prisons or imprisoned at ARWCF. The exception was Clendon Park Primary, which recorded an average of five newly enrolled pupils with caregivers either employed at ARWCF or ASCF, or imprisoned at ARWCF.

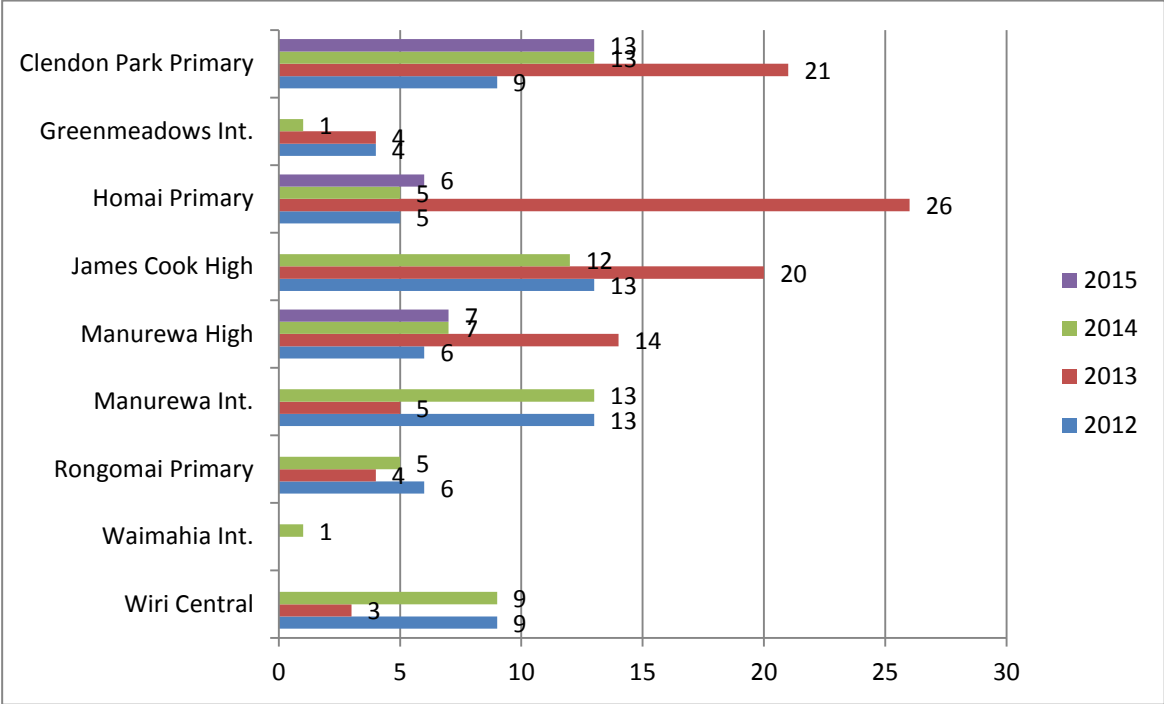
Graph 3: Number of new students enrolling from other schools (per average month)



2013: Average of the mid-year and annual 2013 figures, except in the case of Waimahia (Sept only). 2014: Average of the March and Sept 2014 monitoring figures, except in the cases of Manurewa Intermediate (March figures only) and James Cook High (Sept figures only). 2015: March only.

The graph below shows the number of students transferring from the monitored schools to other schools. Again there was a spike during 2013, with 95 transfers recorded per monitoring month (across the nine schools) compared with 67 in 2012 and 65 in 2014. Most schools recorded a lower number of leavers in 2014 than in 2013. 2015 was comparable with 2014.

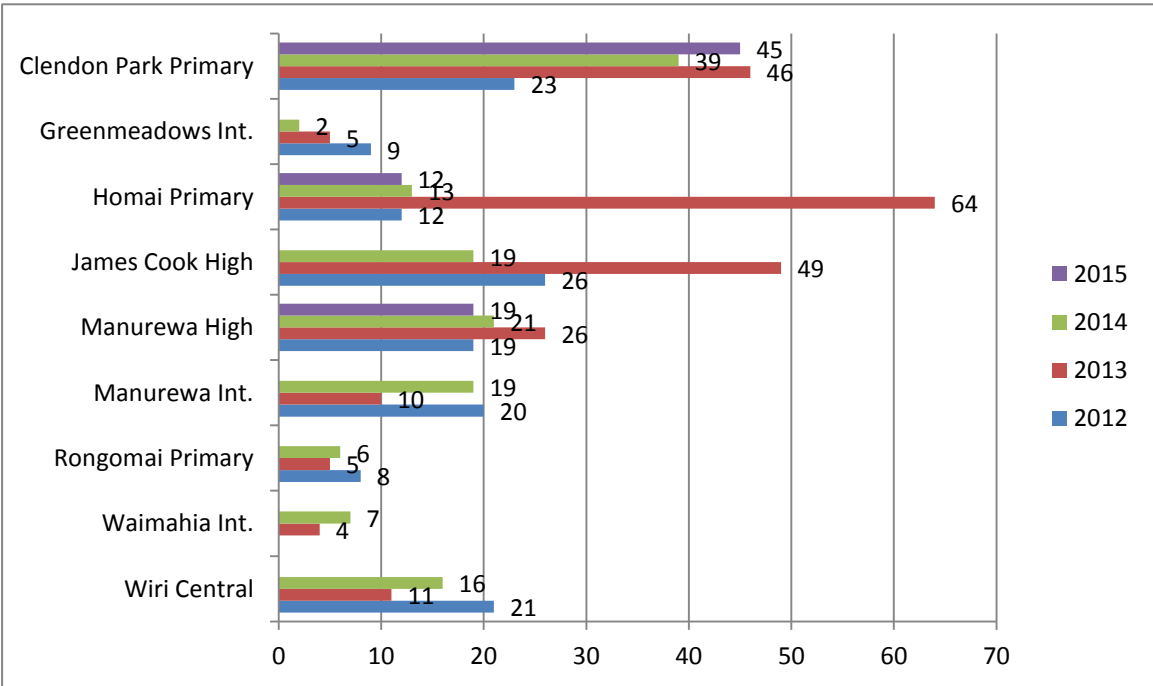
Graph 4: Number of students transferring to other schools (per average monitoring month)



2013: Average of the mid-year and annual figures, except in the case of Waimahia (Sept only). 2014: Average of the March and Sept monitoring figures, except in the cases of Manurewa Intermediate (March only) and James Cook High (Sept only). 2015: March figures only.

Total turnover of students in and out of schools

Summing the number of new students enrolling in each school with the number of students leaving each school for each year gives a total turnover of students (in and out) (Graph 5).



What becomes clearer is that Homai Primary and James Cook High experienced substantially higher turnover of students in and out in 2013 compared with other years. The turnover was 21% of the Homai Primary school roll in 2013 (compared with other years of 4.3%, 4.3% and 4.8%). The turnover was 3.9% of the James Cook High School roll in 2013 (compared with other years of 1.5% and 2.1%). What is clear is that unlike other schools in the area, two schools experienced a substantial percentage increase (Homai Primary) and absolute increase (James Cook High) of student turnover in 2013. This timing coincided with the building workforce's presence at ARCF. While this workforce was known to have a short tenure of employment that may have contributed to such a spike in student turnover, most of the workforce was locally sourced arguing against a workforce effect on school rolls.

Location of transfer

Of the students who transferred to other schools in 2012 to 2014, the greatest proportions transferred to parts of other parts of New Zealand in 2012 (24%), Counties Manukau in 2013 (25%), other areas of Auckland in 2014 (31%) and other areas of New Zealand in 2015 (41%). No obvious trends exist as the data moves up and down each year.

Table 13: Location of schools to which students transferred from participating schools

Location of school	Proportion of transferring students			
	2012 (n = 154) ²²	2013 (n = 48) ²³	2014 (n = 65) ²⁴	2015 (n=26) ²⁵
Manurewa/ Manukau City	10%	19%	23%	23%
Counties Manukau District (other)	19%	25%	12%	15%
Other areas of Auckland	7%	19%	31%	15%
Other areas of NZ	24%	15%	18%	42%
Overseas	12%	23%	18%	4%
Unknown	27%	Category not used	Category not used	Category not used

²² Data available from 6 of the 8 participating schools

²³ Data available from 7 of the 8 participating schools

²⁴ Average of the March and Sept 2014 monitoring figures, except in the cases of Manurewa Intermediate (March only) and James Cook High (Sept only).

²⁵ 2015: Data available from 3 of the 8 schools March only.

3.4 Special needs students

3.4.1 Number of special needs students

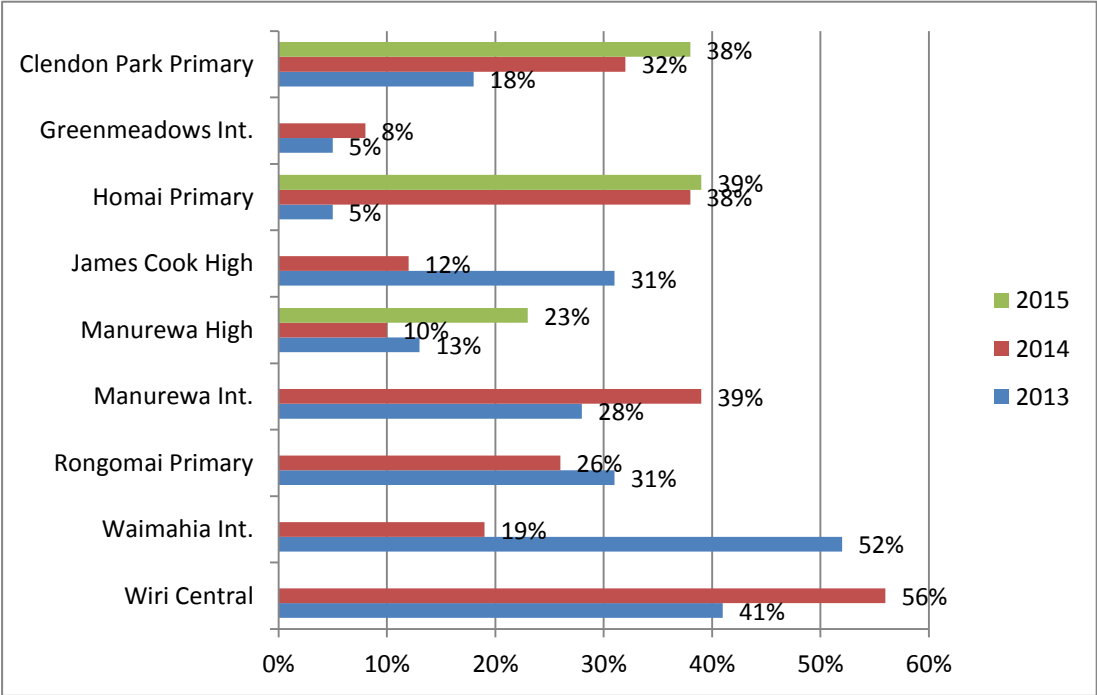
The method for measuring “high (or special) needs” students was refined during 2013 to improve the consistency of data collection between schools. The September 2013 data is therefore used as the baseline for comparison with later data.

Across the nine participating schools, the total number of pupils defined as having special learning and/or behavioural needs fell 7.9% between 2013 (from 1,362 pupils) and 2014 (to 1,254 pupils).

As shown in Graph 5, there was considerable variation between the 2013 and 2015 monitoring periods within most participating schools, as well as considerable variation between schools. The schools recording a significant drop in the number of special needs pupils as a proportion of total roll included James Cook High (from 31% in 2013 to 12% in 2014) and Waimahia Intermediate (from 52% down to 19% in 2014). The schools recording a significant increase between 2013 and 2015 included Clendon Park Primary (18% in 2013; 32% in 2014; 38% in 2015), Homai Primary (5% in 2013; 38% in 2014; to 39% in 2015), Manurewa Intermediate (from 28% to 39% in 2014) and Wiri Central School (from 41% to 56% in 2014).

Most of the participating schools were unable to say whether or how many of the students with special needs had a caregiver imprisoned in ARWCF. In 2015, Clendon Park Primary knew of two cases (out of 224) and Manurewa Intermediate knew of one (out of 257) in 2014. This suggests that the contribution of ARWCF to special needs teaching is low.

Graph 5: Students with special learning and/ or behavioural needs – proportion of total roll (monitoring month)



The most common categories of special learning/behavioural needs across the nine participating schools remained Additional Learning Support (684 students in 2013, 625 in 2014) and ESOL (783 in 2013, 646 in 2014). The number of pupils with high behaviour needs fell by 38% (from 129 to 80), while the number with moderate behaviour needs increased by 253% (from 43 to 152).

The number receiving help from the RTLB service increased from 4 in 2013 to 47 in 2014. As shown in Table 16, the RTLB service also recorded an increased workload between the two monitoring periods. Because of the small number of participating schools in 2015, 2015 totals have not been calculated.

Table 14: Students by type of special learning and/or behavioural need*

School	ORS ²⁶	High Behaviour Needs	Moderate Behaviour Needs	Additional learning support	English as a Second Language ²⁷	High Health Needs	Reading Recovery	Resource Teacher of Literacy
Clendon Park	1 / 2/3	3 / 1/3	7 / 2/2	42 / 47/72	41 / 128/139	8 / 3/1	0 / 0/0	0 / 2/0
Greenmeadows	0 / 0	1 / 5	3 / 4	6 / 9	12 / 11	1 / 0	0 / 0	0 / 0
Homai Primary	0 / 0/0	3 / 3/2	3 / 6/13	3 / 35/36	3 / 66/50	3 / 0/1	3 / 0/0	0 / 1/0
James Cook	2 / 4	4 / 54	8 / 104	90 / 54	300 / 49	5 / 27	0 / 30	0 / 30
Manurewa High	17 / 19/6	0 / 6/7	0 / 7/10	142 / 85/220	112 / 51/79	0 / 3/5	0 / NA/0	0 / 13/0
Manurewa Int.	5 / 3	100 / 4	0 / 5	268 / 217	14 / 27	4 / 1	0 / 0	0 / 0
Rongomai	0 / 2	3 / 1	8 / 6	42 / 34	63 / 52	1 / 1	8 / 0	0 / 0
Waimahia Int.	1 / 2	14 / 3	10 / 5	8 / 19	120 / 21	10 / 9	0 / 0	0 / 0
Wiri Central	1 / 1	1 / 4	4 / 15	83 / 125	118 / 242	1 / 1	9 / 18	4 / 2
Total	27 / 32	129 / 80	43 / 152	684 / 625	783 / 646	33 / 44	20 / 48	4 / 47

* Key: Black = September 2013; Blue = 2014 (average of March and September except in the case of Manurewa Intermediate, March only – and James Cook High, September only); Green=2015(March only)

Note: a student can be classified in more than one category.

²⁶ Ongoing Resourcing Scheme (ORS).

²⁷ ESOL students are defined as those for whom English is a second language; the number receiving funded ESOL services is likely to be lower.

Table 15 shows that far more pupils received additional support from outside agencies during 2014 than in 2013. The total number recorded across eight of the nine participating schools almost doubled, from 136 to 287 (James Cook High has been excluded from this calculation because the 2014 data was unavailable). Increases were particularly pronounced in the cases of Manurewa High and Wiri Central schools. Information on the number of these pupils who had a caregiver imprisoned at ARWCF was very limited, since few of the schools are aware of which pupils are in this situation.

Table 15: Students receiving support from outside agencies

School	Number of students receiving support			% total roll receiving support			Number <i>known</i> to have a caregiver imprisoned at ARWCF			% supported students <i>known</i> to have a caregiver imprisoned at ARWCF		
	2013 ²⁸	2014 ²⁹	2015 ³⁰	2013 ²⁸	2014 ²⁹	2015 ³⁰	2013 ²⁸	2014 ²⁹	2015 ³⁰	2013 ²⁸	2014 ²⁹	2015 ³⁰
Clendon Park	14	12	1	2.5%	2.1%	.2%	4	1	0	28.6%	7.1%	0
Greenmeadows	15	15	-	3.7%	4.2%	-	1	0	-	6.7%	0	-
Homai Primary	7	10	11	2.5%	3.4%	4.3%	Unknown	Unknown	Unknown	-	-	Unknown
James Cook	8	Unknown	-	0.6%	-	-	Unknown	Unknown	-	-	-	-
Manurewa High	15	130	140	0.9%	6.9%	7.1%	Unknown	Unknown	2	-	-	1.4%
Manurewa Int.	28	0	-	3.9%	-	-	0	0	-	-	-	-
Rongomai	8	13	-	3.6%	7.4%	-	0	0	-	-	-	-
Waimahia Int.	30	29	-	10.2%	12.2%	-	Unknown	Unknown	-	-	-	-
Wiri Central	38.5	78	-	8.2%	17.3%	-	Unknown	Unknown	-	-	-	-
Total	144	At least 287					At least 5	At least 1	At least 2			

-: Data not available

3.4.2 Resource Teacher: Learning and Behaviour Unit (RTL B)

There is no 2015 data to update this section beyond the 2014 report.

RTL B Units support students, teachers and families when children are having problems with either learning or behaviour. The Manurewa RTL B is based at Manurewa East School and supports 32 schools in the Manurewa area.

The RTL B Unit was monitored for the first time during May – October 2013, therefore the data in the table below represents the period beginning May 2013. The office for the RTL B cluster in Manurewa (comprising 30 RTL B teachers) provides data on the total number of referrals each month. However, figures on the numbers of students by category of need (as shown in the first three rows of Table 16) is provided by individual RTL B teachers, not all of whom have responded to the survey in one or more of the three monitoring periods. For the 2014 mid-year monitoring, responses were received from 22 of the 30 teachers (73%), while 25 (83%) responded to the end of year monitoring³¹.

²⁸ Average of the March and September 2013 figures, except in the case of Waimahia (Sept only).

²⁹ Average of the March and Sept 2014 figures, except in the cases of Manurewa Intermediate (March only) and James Cook High (Sept only).

³⁰ 2015 March figures only.

³¹ For the purposes of calculating the figures in Table 16, we have assumed that each RTL B teacher deals with an equal number of cases. We have adjusted the figures provided by the proportion of teachers responding in each period, and then averaged these adjusted results for the two periods to produce a monthly average across the 12 months to 31 October 2014.

The RTLB unit as a whole received 479 referrals in 2014 (an average of 40 per month during the 12 months to 31 October 2014, compared with 33 per month during the six months to 31 October 2013). The figure for the first half of the 2014 period was 36 per month and the figure for the second half was 44, indicating a steady increase throughout the 18 months that monitoring has taken place (see Graph 6). The number of RTLB students *known* to have a caregiver at ARWCF continues to be low (2 per 6 months), but note that most teachers answered “don’t know” to this question.

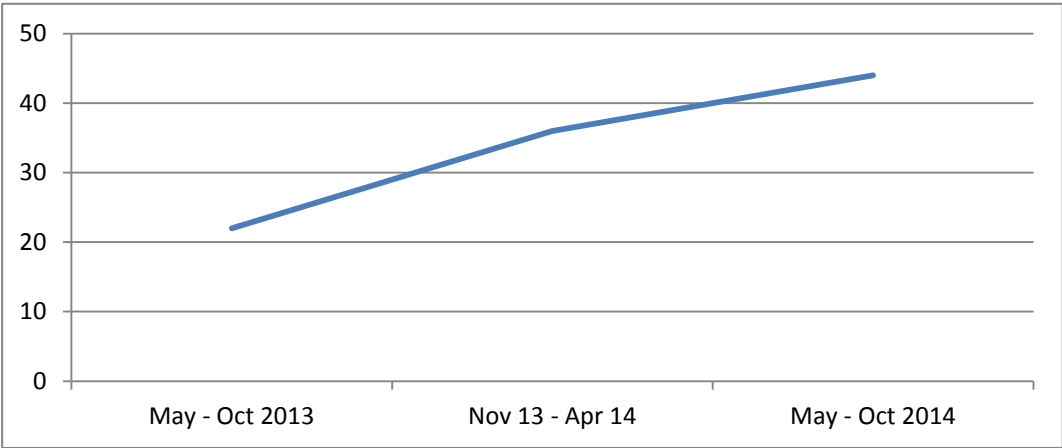
Forty-six of the students receiving assistance from the RTLB units during 2014 also received additional support from other agencies³², compared with 23 in the six months recorded in 2013. Of the 46 receiving additional assistance, two were known to have a caregiver imprisoned at ARWCF (compared with four in 2013). Again, most respondents did not know whether those under their care had a caregiver in the prison.

Table 16: Number of students receiving support from RTLB by high needs category

High needs category	2013 ³³	2014 ³⁴
Total referrals per month	33	40
Learning needs referrals	21.2	19.8
Behaviour needs referrals	6.4	12
Learning and behaviour needs combined (category added in 2014)	-	13.4
Number of RTLB students <i>KNOWN</i> to have a caregiver in ARWCF	2	2
Number of students receiving assistance from other agencies	23	46
Number of students receiving other assistance <i>KNOWN</i> to have a caregiver in ARWCF	4	2

Note that the category of *learning and behavioural needs* was added to the survey in 2014. It is likely that the *learning needs* and *behaviour needs* categories in 2013 included some double-ups. Note also that the average referrals per month may include health needs referrals, which are not included in the learning and behavioural needs categories.

Graph 6: Average monthly referrals to Manurewa RTLB Unit



³² These other agencies include SwiS, counsellors, mental health, drug and alcohol, Interim Response.

³³ Data for 1 May to 31 October 2013.

³⁴ Average of the mid-year and annual 2014 monitoring figures.

3.4.3 Number of special needs of pre-school children

A total of 42 children from 13 of the 17 participating pre-schools were defined as having “special needs”³⁵ (a decrease of two children relative to 2013). Finlayson Park had the highest percentage of children with special needs (23%) in 2014. Six of 9 kindergartens recorded an increase in the proportion of special needs children on their rolls, while just two of eight pre-school facilities recorded an increase from 2013 to 2015. See Table 17.

None of the 42 children with special needs were known to have a caregiver in ARWCF.

Table 17: Number of special-needs pre-schoolers by pre-school facility

Pre-School Facilities	Number ³⁶			% Total Roll ³⁶		
	2013	2014	2015	2013	2014	2015
Kindergarten Association facilities:						
Alfriston Road	3.5	4	-	10%	10%	-
Clayton Park	0.5	1.5	-	1%	4%	-
Finlayson Park	5.5	9	-	16%	23%	-
Hillpark	2	3	-	5%	8%	-
Homai	5	6.5	-	13%	16%	-
Leabank	4.5	5	-	11%	13%	-
Manukau Central	0	0	-	0	0	-
Manurewa West	2	3	-	7%	10%	-
Roscommon	3	3	-	8%	3%	-
Other pre-school facilities:						
FS Everglade Babies	0	0	0	-	-	-
FS Everglade	2	1.5	3	4%	3%	6%
FS Wattledowns	0	1.5	1	-	2%	2%
CK Wattledowns	3	1	1	14%	4%	6%
Topkids Weymouth	5	2	5	7%	2%	6%
CK Manurewa	1	1	2	5%	3%	8%
FS Maich	0	0	3	-	-	4%
ABC Manurewa Central	2	0	1	3%	-	1%
Total (17 centres)³⁷	39	42	16	5%	5%	4%

³⁵ “Special needs” is defined as having been referred to Group Special Education or other similar agencies. The term was specifically defined after the baseline report to ensure that data from new pre-school facilities participating in the monitoring interpreted it in a consistent manner.

³⁶ Average of March and September totals. In cases where information was unknown for one or other survey period, the single figure reported for the other survey period has been used.

³⁷ 2015 Total 8 centres only using March data

3.4.4 Ministry of Education's Psychological Service for students

There is no 2015 data to update this section beyond the 2014 report.

The number of pre-school children in Manukau District³⁸ and Manurewa accessing the Ministry of Education's Psychological Services increased significantly between the previous monitoring periods and 2014, more than doubling between 2012 and 2014 in the case of Manukau (including Manurewa) and increasing by a factor of six in the case of Manurewa alone.

In contrast, the numbers of primary/intermediate school students accessing the service fell significantly, more than halving in both cases. Secondary school student numbers rose slightly in the case of Manurewa and stayed about the same in the case of Manukau as a whole. The decline in overall numbers accessing the service was 19% in Manurewa and 29% in Manukau as a whole.

Thirty percent of the students in Manukau District who accessed the service during the 2014 monitoring period were from Manurewa, up from 22% in 2013 and 27% in 2012.

In April 2014, eight (10%) of the children from Manurewa who accessed Psychological Services were known to have a caregiver in prison at ARWCF while in Manukau (excluding Manurewa) the number was 24 (9%). This is not an inconsequential percentage, in what is service where the total number of students accessing services is declining.

Table 18: Total numbers of local students accessing Ministry of Education Psychological services

School area	Monitoring period	Pre-school students	Primary / intermediate school students	Secondary school students	Students accessing Psych. Services & with a caregiver at ARWCF	Total students
Students from Manurewa schools only	2012	6	81	8	Unknown	95
	2013 ³⁹	12	68	6	10	96
	2014 ⁴⁰	37	30	11	8	78
Total students from Manukau District	2012	41	322		Unknown	363
	2013 ³⁹	39	278	27	26	370
	2014 ⁴⁰	108	125	28	24	261

Source: Ministry of Education.

³⁸ Manukau District includes all of Counties Manukau except for Mangere, which comes under the Auckland office of the MoE Psychological Service.

³⁹ Average of the mid-year and annual 2013 monitoring figures. In cases where information was unknown for one or other survey period, the single figure reported for the other survey period has been used.

⁴⁰ Average of the mid-year and annual 2014 monitoring figures.

In the 2013 survey, it was suggested that one reason for the declining uptake of the service could be a perception among local schools that the service is fully committed and unable to take on additional students without significant delays⁴¹. In response, the 2014 survey sought information on waiting times for access to the service. The following table shows that wait times are indeed significant but indications are that the situation is improving, with a significant reduction over the monitoring year in the numbers waiting three months or more. At the time of the April survey, nearly 50 children had been waiting more than three months for access, with a further 26 waiting between one and three months. By October, 81 children had waited between one and two months for access to the service, however none had been waiting more than three months. The total number of students referred in October 2014 was substantially lower than April 2014 which may explain much of the improvement in wait times. See Table 19.

Table 19: Wait time from date of referral to first access to service (number of students)

Monitoring period	30 days	31 – 60 days	61 – 90 days	More than 90 days
April 2014	238	16	10	47
October 2014	6	81	8	0

⁴¹ Comment from two local principals and the perception verified by staff of MoE Psychological Services.

3.5 Unjustified absence e.g. truancy

3.5.1 Truancy incidents

School truancy figures refer to the number of incidents recorded, not the number of students involved. What is clear is the truancy incident rates vary from school to school based on different reporting protocols. For example, Homai Primary truancy incidents altered dramatically after adoption of a new school management system (to improve the tracking process) and Wiri Central School changed the definition of “truancy” with similar effect.

3.5.2 Number of truants

More informative data is the actual number of the pupils who were considered to be truants (as determined by the school). Table 21 shows that the highest proportion of truants per school roll was recorded at Rongomai Primary (10.5%), followed by James Cook High (4%) in 2014. Both of these schools recorded an increase in truants between 2013 and 2014. Five of the nine participating schools the percentage of students considered truants rose, with the two high schools accounting for the largest increases in absolute numbers of students who were considered truants.

Information on the number of truants with a caregiver imprisoned at ARWCF was very limited since few of the schools are aware of which pupils are in this situation. Only three schools provided such data. All (3) of the students considered truants at Clendon Park Primary in 2015 had a caregiver at ARWCF, while for Greenmeadows and Manurewa Intermediate, the number was known to be zero in 2014. The implication is that while total number (and proportions) of truants is low at most schools, for at least one school the truancy issue is substantially affected by children of prisoners.

Table 21: Estimated number of truants by school

School	School roll			Number of truants			Truants as percentage of total roll			Number truants with caregiver at ARWCF		
	2013 ⁴²	2014 ⁴³	2015 ⁴⁴	2013 ⁴²	2014 ⁴³	2015 ⁴⁴	2013 ⁴²	2014 ⁴³	2015 ⁴⁴	2013 ⁴²	2014 ⁴³	2015 ⁴⁴
Clendon Park	551	579	580	7	5	3	1.3%	0.9%	0.5%	2	2	3
Greenmeadows	408	347	-	3.5	2	-	0.9%	0.6%	-	0	0	-
Homai Primary	259	293	256	2	1	3	0.8%	0.3%	1.2%	Unknown		
James Cook High	1,271	1,263	-	24	50	-	1.9%	4.0%	-	Unknown		-
Manurewa High	1,770	1,896	1982	35.5	53	55	2.0%	2.8%	2.8%	Unknown		
Manurewa Int.	715	655	-	3.5	6	-	0.5%	0.9%	-	Unknown	0	-
Rongomai Primary	221	176	-	14.5	19	-	6.6%	10.5%	-	Unknown		-
Waimahia Int.	293	237	-	-	3	-	-	1.3%	-	Unknown		-
Wiri Central	472	451	-	4	5	-	2.7%	1.1%	-	Unknown		-
Total	5,960	5,895	2,818	94	144	61	3.8%	2.4%	2.2%	At least 2	At least 2	At least 2

-: Data not available

⁴² Average of the March and September 2013 figures, except in the case of Waimahia (Sept only).

⁴³ Average of the March and Sept 2014 figures, except in the cases of Manurewa Intermediate (March only) and James Cook High (Sept only).

⁴⁴ 2015 March figures only

3.5.3 Referral to Attendance Services

In 2014 and 2015, schools were asked how many pupils had been referred to Attendance Services. Across the nine participating schools, 67 pupils were referred to Attendance Services during 2014. In most cases, the number referred to Attendance Services was similar to the number of truants. With only three schools data available for 2015, it can only be noted that there is a small increase in referrals with Clendon Park school and Homai Primary, whereas Manurewa High has seen a more substantial increase in referrals.

Table 22: Number of pupils referred to Attendance Services

School	Pupils referred to Attendance Services 2014	Pupils referred to Attendance Services 2015
Clendon Park	6.5	8
Greenmeadows Intermediate	3	-
Homai Primary	0.5	1
James Cook High	45	-
Manurewa High	2.5	10
Manurewa Intermediate	6	-
Rongomai Primary	1.5	-
Waimahia Intermediate	2	-
Wiri Central School	0	-
Total	67	-

Table 23 shows the truancy caseload in Manurewa (across all schools) as reported by the NZ Police. The truancy level recorded in 2014 (44 per six month period) were up slightly from the 2013 monitoring period (37 per six month period), but remained below that recorded in 2012 (57 per six month period). Taking the three years of data together, 3 of 138 truants were known to have a caregiver who was a prisoner at or probationer from ARWCF. This data shows that the level truancy that is attributable to students who have a caregiver imprisoned at ARWCF is low.

Table 23: Truancy caseload in Manurewa recorded by Police (across six month reporting period)

	2012	2013 ⁴⁵	2014 ⁴⁶
Number of truants the Police have worked with over the monitoring period	57	37	44
Number of these truants have a caregiver who is a prisoner at or on probation from ARWCF	0	1	2

Source: NZ Police.

⁴⁵ Average of the mid-year and annual 2013 monitoring figures.

⁴⁶ April – October 2014 figures only.

3.6 Pre-school occupancy and enrolments

As illustrated in Table 24, the proportion of occupied capacity across all kindergarten facilities averaged 99% in 2014, whereas across other preschool facilities occupancy averaged 84% in 2015.

In the case of Topkids Weymouth, the reduced occupancy was attributable to an increase of 25% (or 19 children) in its licensed capacity between September 2013 and September 2014. In addition, the system for collecting the Kidicorp data was improved in 2014 so it is possible that the 2014 figures are more accurate than those from 2013.

The 17 pre-school facilities collectively enrolled a total of 109 children per monitoring month during 2014, compared with 87 in each of the preceding years. This equated to an *average* of 6.4 new enrolments per facility per month. The average number of enrolments per month in each centre during 2014 ranged from 2.5 to 13.

None of the new enrolments recorded during 2014 were known to have a caregiver employed at ARWCF or ASCF, or a caregiver imprisoned at ARWCF.

Table 24: New enrolments and occupancy at each pre-school facility (average per month)

Pre-school facilities	Number of new enrolments				Occupied capacity		
	2012	2013 ⁴⁷	2014 ⁴⁸	2015 ⁴⁹	2013 ⁴⁷	2014 ⁴⁸	2015 ⁴⁹
Kindergarten Association facilities							
Alfriston Road	5.7	9	8	-	86%	98%	-
Clayton Park	9.3	6.5	5.5	-	100%	100%	-
Finlayson Park	6.3	0.5	5.5	-	87%	97%	-
Hillpark	5.0	3	4	-	100%	100%	-
Homai	6.0	4	5.5	-	100%	100%	-
Leabank	5.0	5.5	3.5	-	99%	98%	-
Manukau Central	5.0	6	3.5	-	100%	100%	-
Manurewa West	5.7	2	2.5	-	99%	100%	-
Roscommon	39.0	9	5.5	-	99%	99%	-
Total Kindergartens	87	45.5	43.5	-	97%	99%	-
Other pre-school facilities⁵⁰							
FS Everglade Babies	-	2.5	6	5	60%	81%	94%
FS Everglade	-	5	4	4	100%	100%	100%
FS Wattledowns	-	6.5	7	2	86%	78%	77%
CK Wattledowns	-	2	7.5	4	82%	75%	68%
Topkids Weymouth	-	11.5	9	15	100%	88%	85%
CK Manurewa	-	3	6	6	71%	84%	81%
FS Maich	-	7	13	4	74%	79%	79%
ABC Manurewa Central	-	3.5	13	4	100%	97%	91%
Total pre-schools	-	41	65.5	44	84%	85%	84%

⁴⁷ Average of the mid-year and annual 2013 monitoring figures.

⁴⁸ Average of the mid-year and annual 2014 monitoring figures.

⁴⁹ March only.

⁵⁰ The 'other pre-school facilities' were not involved in the 2012 monitoring.

4. Local NGO support services

Section summary – what does the data say about local NGO support services in relation to Corrections facilities

Number of volunteers and hours delivered direct to ARWCF prisoners: The number of volunteers working on-site with ARWCF prisoners in 2015 (173) was slightly higher than in 2012 (161). The data supports the hypothesis that ARWCF has a potential effect on volunteer services directed towards ARWCF prisoners.

Service usage of local social service NGOs: Most NGOs predominantly provide services to the general public (e.g. Pillars, Manurewa marae). The absolute number or proportion of people associated with the prison receiving services from these general social service agencies is low (e.g. Pillars provides services to one prisoner family, Marae services to ex-prisoners is about 4% of total services) or zero (e.g. Pillars mentoring programme for children). In contrast, PARS (20% of all services from ARWCF) and St Elizabeth’s Anglican Church (100% ARWCF) provide services that are driven directly by the prisons. The data does support a hypothesis that selected NGO services (i.e. those focussing on prisoners) are potentially affected by the local prisons.

Māori cultural services: While whai korero services are delivered to more than 20 people per month by Manurewa Marae, none are prisoners. In contrast, the marae runs a one day Mana Wahine programme for ARWCF at which over 300 attended. Pukaki ki Te Akitai delivered a Tikanga Programme to 14 prisoners over a six month period. The data does support a hypothesis that selected NGO services (Mana Wahine programme and Tikanga programme, focussing on prisoners) are potentially affected by the local prisons.

Child travel fund or whānau transport for whānau transport: The PARS administered Child Travel fund has given out fewer grants each monitoring period (from 16/month in 2012 to 8.8 in 2014). Of the \$4,290 given, just \$146 (3%) related to ARWCF child travel trips. Regarding whanau transport, none were for travel to ARWCF. The data supports a hypothesis that the ARWCF prison has a very low potential effect on the child travel fund and no potential to affect whanau transport.

Overall assessment: *While most NGOs provide services to the general public and have a low potential effect on their services by ARWCF prisoners or their families, a select group of NGOs have their work either partially or fully driven by ARWCF. This includes St Elizabeth’s Anglican Church range of services, Manurewa Marae’s Mana Wahine programme, Pukaki ki Te Akitai’s tikanga programme, and Prisoners Aid Rehabilitation Services non-housing assistance. This data supports the hypothesis that ARWCF potentially affects prisoner-focussed services. The data does not support a hypothesis that the ARWCF prison might potentially affect the local child travel fund or whanau transport.*

4.1 Background

Prisoners’ Aid and Rehabilitation Society (PARS), Pillars, St Elizabeth’s Anglican Church (Clendon), the Sisters of Mercy Wiri, Manurewa Marae, and Te Whakaora Tangata are the NGOs in the local area selected for monitoring. Both the Marae and Te Whakaora Tangata joined the Monitoring Programme in October 2014. For a description of relevant services these organisations provide please refer to Appendix 3.

These NGOs have been selected for inclusion in the SIMP because they are among those most likely to be affected by changes in the demand for support services. This includes services to meet the operational requirements of the two Corrections facilities and to meet the needs of families of prisoners moving into the area.

4.2 General NGO social support services

4.2.1 Number of volunteers and number of hours delivered to ARWCF prisoners

Table 25 provides details on the voluntary support services that are delivered on-site to ARWCF prisoners.

The number of volunteers working directly with ARWCF prisoners increased from 2012 to 2014 and decreased in 2015. The average volunteer hours per month increases and/or decreases for each organisation over the monitoring years, with no obvious trend. An exception is the Sisters of Mercy Wiri, whose hours more than doubled due to a halving of the number of volunteers in 2014, and a gradual increase in volunteer numbers at St Elizabeth's Anglican Church with a consequent gradual decrease in the hours volunteered.

Table 25: Volunteer contribution to supporting ARWCF prisoners, prisoner families or released ARWCF prisoners (per month)

Organisation	Number of volunteers in the month monitored				Average number of hours per volunteer in the month monitored			
	2012	2013	2014	2015	2012	2013	2014	2015
AA	16	13	20	21	0.5	1.7		0.6
Arts & Crafts	5	5	-	5	6.9	3.6	-	1.6
Auckland Libraries	11	14	14	0	1.5	1.1		0
St Elizabeth's Church	7	11	12.5	12	21.3	19.1	17.1	15.5
Other faith-based volunteers	84	84	75	106	2.6	3.2	-	2.6
Independent ESOL	1	1	-	0	26	16.5		0
Independent ESOL	1	1	-	0	8.7	3.5		0
Independent Youth Programme	1	1	-	1	10.7	12		8
Pillars	7	22	32	-	9.4	18	7.8	-
Sisters of Mercy (Wiri)	4	4	2	-	6.2	4.9	10.3	-
Stitch	14	14	14	13	4.6	4.5		3.2
Narcotics Anonymous	0	10	11	13	0	0.5		0.5
Other independent ⁵¹	0	0.5	27	14 ⁵²	0	9.5		5.2
Total (monthly average)	161	178.5	209.5	173	98.4	98.1		

⁵¹ ARWCF was unable to clarify what sorts of services this category included.

⁵² Other includes Howard League and RAW.

In 2014 PARS reported that, unlike in previous monitoring periods, the organisation had not experienced problems recruiting sufficient staff or volunteers to meet the demand for its services. The organisation had obtained funding for a volunteer co-ordinator and since that time has recruited 39 new volunteers with a specific focus on ARWCF for community mentoring. Sixteen ARWCF inmates had been matched with volunteers who will provide mentoring support prior to and following release.

As in previous monitoring periods, St Elizabeth's Anglican Church struggled to recruit staff to meet the demand generated by ARWCF prisoners and their families due to a lack of funding, however in the latter part of 2014 the church was able to engage a part time staff member and that person remained in place as at the April 2015 monitoring period (and continue if the funding is maintained). A house mum has also been created in one of the houses in 2015.

The Sisters of Mercy and Te Whakaora Tangata had not experienced difficulties recruiting staff or volunteers to meet the demand from ARWCF for their services in 2014.

4.2.2 Service usage of local NGOs

PARS⁵³ recorded a monthly average of 125 requests for assistance other than housing related services from whānau, outside agencies and from prisoners released from ARWCF in 2014. This was almost the same as that recorded in 2013 (monthly average 124). Of these, the number of referrals for non-housing assistance originating from ARWCF comprised 16% of the total caseload for this form of support.

Pillars⁵⁴ received seven calls per month to its helpline during the monitoring period, which was comparable with the figure recorded in 2013. One of the calls received was from a family associated with a prisoner at ARWCF. There were two dependents associated with this call. Pillars did not record any referrals to the Strengthening Families programme. The number of children enrolled in Pillars' mentoring programme continues to increase (35 compared with 27 in 2013), but none of these children had a caregiver in ARWCF. The number of volunteers for the programme increased from 22 to 32 (monthly average) between 2013 and 2014. The number of volunteer hours spent by each individual declined from 18 in 2013 to eight in 2014 (monthly average), in line with the increase in volunteer numbers. No requests for assistance were declined due to a lack of volunteer capacity.

Manurewa Marae is a pan-tribal Marae providing a variety of services for the local community, aimed at supporting whanau to independence through whanau planning, advocacy, mentoring, counselling, and referrals to social service providers (see Appendix 3 for more details). The Marae joined the monitoring programme for the first time in the second half of 2014 (providing data for the month of July).

During July 2014 the Marae provided assistance and advice to an average of 20 individuals/families per week. Four of these were people on parole from ARWCF. It was unknown whether any were from families with a prisoner in ARWCF, or whether any had moved to the local or Manukau area to be close to a prisoner at ARWCF, or whether any had settled in Manurewa after having been released from ARWCF. The Marae spent 20 hours of paid time and 40 – 60 hours of volunteer time providing these services. The Marae has had difficulty recruiting sufficient staff to meet demand for its services because of insufficient funding.

⁵³ PARS (Prisoners Aid and Rehabilitation Service) is contracted by the Department of Corrections to provide prisoner support services.

⁵⁴ Pillars is contracted by Ministry of Social Development to provide services to families of prisoners but it also runs a volunteer phone-help service for these families.

During July 2014 the Marae referred 60+ individuals or families to other agencies for help, the details of which are shown in the following table. No referrals were made directly to the Salvation Army but some were referred to the Salvation Army via Te Raukura Korowai health clinic.

For cultural services offered by the Marae, see section 4.2.

Table 26: Referrals by Manurewa Marae to other agencies (per month)

Agency	Number of referrals (estimate) 2014	Number associated with ARWCF 2014
Te Raukawa Korowai Clinic	40	4
Te Raukawa Korowai social workers	40	4
Solomon Group	60	-
Te Whakaora Tangata	60	-

Te Whakaora Tangata works with vulnerable families to provide “emotional healing” for individuals and families, including parenting courses and marriage advice (refer to Appendix 3 for more detail on its services). This organisation joined the monitoring programme for the first time in October 2014. During that month forty-five families accessed its services but none of these families were associated with a prisoner at ARWCF. Over the past year the organisation has not encountered any problems recruiting sufficient staff to meet the demand for its service.

The Sisters of Mercy Wiri volunteers spent about the same amount of time with ARWCF prisoners/ ex-prisoners /prisoner families during 2014 as they did in 2013 (a monthly average of 21 hours or ten per volunteer, compared with 20 hours or five per volunteer in 2013 and 25 hours per month in 2012).

This organisation recorded two former ARWCF prisoners among its clients in October 2014 and none in April 2014, and recorded no clients from families with a prisoner at ARWCF during either month. (Only one former prisoner was recorded as a client in 2013.)

St Elizabeth’s Anglican Church spent 77 hours of paid staff time per month working with prisoners at ARWCF or their families, slightly more than the average of 73 hours recorded in 2013. The church reported in April 2014 that it was having trouble recruiting sufficient paid staff because of the difficulty accessing funding for such positions. By October, however, the church had appointed a new part-time employee to help with administration and property maintenance of transitional houses, as well as keeping the vicar informed about concerns regarding ex-prisoners in the church’s care. The church now has 1.5 full time paid positions.

The number of volunteers has increased by one and consequently the number of hours per volunteer spent supporting clients associated with ARWCF has decreased slightly. The monthly average hours that church personnel spent supporting clients associated with ARWCF was 214.

During 2015, the church supported, on average, 12 clients per month. All were associated with the ARWCF (as was also the case in 2013/2014). In 2015 the service was helping three clients from families with caregivers at the prison, and nine people who had previously been imprisoned. One of the church’s clients in 2015 had moved to the local area (Manurewa / Manukau City) to be close to a prisoner at ARWCF (compared with one in the 2013 and none in the 2014 monitoring periods). Two clients had settled in Manurewa since being released from ARWCF (compared with two in 2014 and one in 2013).

Table 27: Summary of the services used by prisoners at ARWCF or their families

Agency	Name of service	Number using service in a monitored month in 2014 (2015)		Proportion of prisoners/others using service in 2014 (2015)
		Number of prisoners at AWCRF or their families	Total number of people	
Prisoners' Aid and Rehabilitation Society (PARS)	Non-housing related services	20	125	16%
Pillars	Helpline	1	7	14%
	Mentoring programme for children	0	35	0%
Manurewa marae	Assistance and advice	4	90	4%
Te Whakaora Tanagata	Emotional healing, parenting courses and marriage advice	0	45	0%
The Sisters of Mercy Wiri		2	-	-%
St Elizabeth's Anglican Church	housing, support for parole hearings, probation support, budgeting counselling	15 (12)	15 (12)	100% (100%)

4.3 Maori cultural services

This is a new section of the monitoring report, recording outputs of services specifically designed to strengthen Maori culture and that are associated or potentially associated with the two Corrections facilities.

Table 26A: Cultural support services provided by Manurewa Marae

Service	Number	Number of ARWCF prisoners/parolees
Whai korero	20+ per month	0
Mana Wahine one day programme for ARWCF	1	300 +

In 2015, 14 prisoners at ARWCF participated in a Tikanga Programme by Pūkaki ki Te Akitai during the six month monitoring period. The total number of general public participants on the Tikanga Programme was not asked, and so a proportion of service is not able to be calculated.

4.4 Child Travel Fund or Whānau Transport

There is no 2015 data to update this section beyond the 2014 report.

Funding for the PARS-administered Child Travel Fund was suspended between September and November 2013 because of overspending, and the fund now operates on a priority wait list. The number of Child Travel Grants funded by PARS has fallen every period since monitoring began:

In second six month monitoring period of 2014 PARS funded a monthly average of 8.8 Child Travel grants, compared with

- 12.4 per month in 2013
- 16 per month in 2012.

Of the 53 grants in the six month monitoring period of 2014, two (an average of 0.33 per month) were for travel to the ARWCF (compared with one per month in the second half of 2013).

The average monthly expenditure on Child Travel in 2014 fell to \$715, down from an average of \$2,036 in 2013. The proportion of expenditure for Child Travel trips to ARWCF over the six month monitoring period was \$146.

Regarding Whānau transport, PARS made 18 grants for Whānau Transport over the monitoring period but none of these was for travel to ARWCF. In 2013, the limited number of grants made for Whānau Travel was attributed by PARS to the lack of volunteers for this activity. (The Whānau Travel Fund covers the fuel costs of volunteers who supply transport for families visiting prisoners.

5. Local health services

Section summary – what does the data say about local health services in relation to Corrections facilities

On-site visits by off-site health providers: During 2015 the number of consultations to ARWCF by off-site health providers was consistent for midwife, Mason Clinic and Dentist services. In 2015, monthly visits by the physiotherapist increased by a factor of five (four per month, to 20 per month in 2015) compared with previous years. Also, GP services declined by a factor of three (17 per month, to 5 per month in 2015). This data supports a hypothesis that the ARWCF potentially affects the number of visits by these health providers.

Prisoner visits to off-site health providers: The number of visits by ARWCF prisoners to off-site health providers has remained constant (about 40 per month) over the four years of monitoring. As a proportion of total visits by the general population it is expected ARWCF contributes a small though notable proportion. This data supports a hypothesis that ARWCF has a very small potential effect on the number of visits to off-site health providers.

Mason clinic inpatients and outpatients: ARWCF prisoners make up a growing (over the four monitored years) and substantial proportion of inpatient admissions (2 of 5 in 2017) to the Mason Clinic. What is happening to prevalence is not known. The number of prisoners as outpatients (forensic prison team) has also risen steadily over the monitored years, to reach 46.3 prisoners per month in 2015. New referrals from ARWCF has increased five-fold between 2014 and 2015, leading to higher numbers of prisoners on the acute-Mason wait list in 2015. These increases do not appear to have affected wait times which have improved or been maintained over the four monitored years. This data supports a hypothesis that ARWCF has a potential effect on inpatient and outpatient numbers at the Mason Clinic, but a low potential effect on wait times.

Primary health care clinics and specialist services: There is no data on ARWCF ex-prisoners or prisoner families on these services. Consequently there is no data to support or refute a hypothesis that the prisons affect these services. Given the very large number of the general population served by such services however, it is hypothesised that the potential effect of ARWCF ex-prisoners or prisoner families on these services is very low.

Stand Children Services: There has been an overall decrease in referrals to Stand Children Services over the four monitored years, countered by an increase in the number of children at Stand Children's Auckland Village over the four monitored years. Against this backdrop, the proportion of referrals/service usage by the children of ARWCF prisoners has declined each year to rates less than 1 in 100. This data supports the hypothesis that children of ARWCF caregivers have a very low potential effect on Stand Children Services.

St John's Ambulance: ARWCF callouts to St John's Ambulance have decreased to one per month in 2015, down from a previous average of 2.5 to 3 call-outs per month in 2012-2014. The hours of attendance at each call has stayed between 3 to 3.75 hours over the four monitoring years. It is not known what proportion of St John's Ambulance callouts the ARWCF work represents, but it is likely to be low. This data supports the hypothesis that ARWCF has a low potential effect on St John's Ambulance Services.

Health services provided to Korowai Manaaki Youth Justice Facility: Substantial numbers of health service provider consultations (407 in 2015) continue to be provided to the Youth Justice Facility. These include GP, nurse, mental health and other services. The service most altered of the four monitored years is mental health, where consultations have increased four-fold to 36 per

month in 2015. This data supports the hypothesis that the Youth Justice Facility potentially affects the number of mental health consultations by health service providers.

Overall assessment: Data supports the hypothesis that the ARWCF (and Youth Justice Facility) potentially affects one off-site health provider (Mason clinic) and those health services providing on-site consultations at ARWCF and the Youth Justice Facility.

In contrast, population health providers who typically service large numbers of the general population, service a low or very low proportion of ARWCF users. This supports the hypothesis of a low or very low potential effect on population health service providers such as primary health care clinics, Stand Children Services and St John's Ambulance services.

5.1 Background

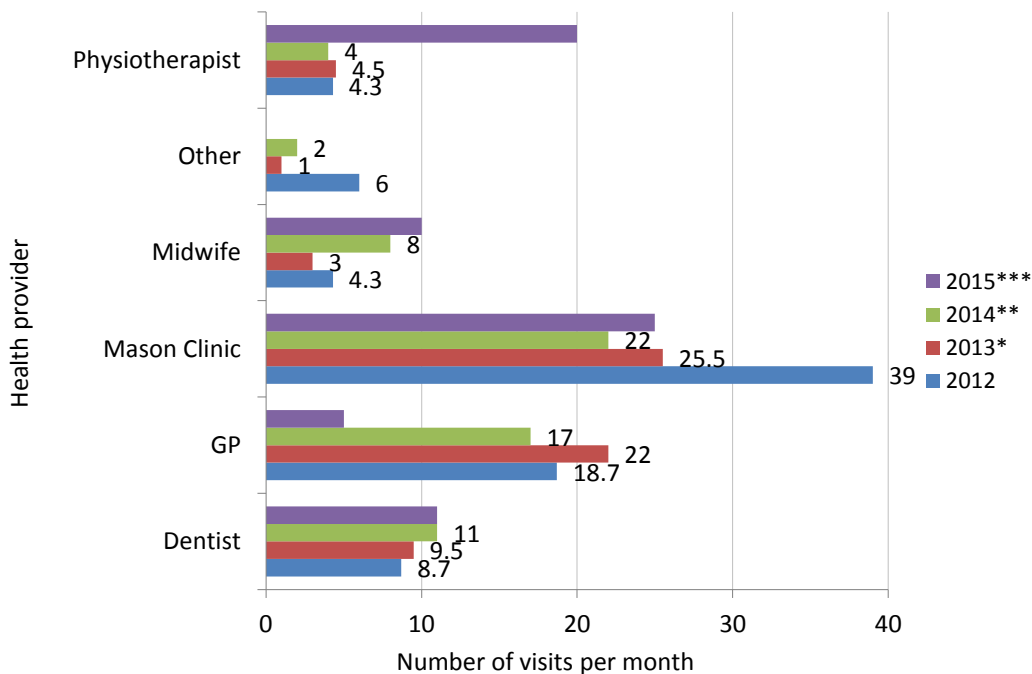
Data for this section is provided by ARWCF and the Youth Justice Facility (YJF), a selection of local health service providers, as well as providers operating in the wider area that may be affected by demands generated by the two Corrections facilities.

5.2 Services affected by prisoner health requirements

5.2.1 On-site visits by health providers

During 2015 the demand for visits to the prison by most off-site health providers was reasonably consistent for midwife, Mason Clinic and Dentist services. In 2015, monthly visits by the physiotherapist increased by a factor of five (four per month to 20 per month) compared with the previous years, and GP services declined by a factor of three (17 per month to 5 per month).

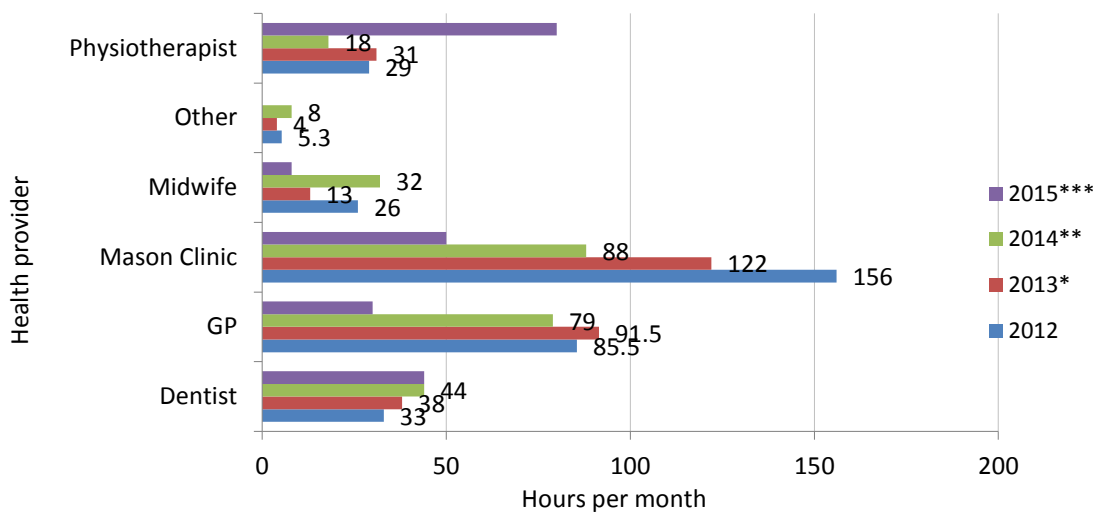
Graph 7: Number of visits per month to prisoners or staff at ARWCF by health service providers



* Average of the mid-year and annual 2013 monitoring figures. ** Sept 2014 figures only. ***2015 April only

The changes in the number of visits from health service providers to ARWCF correspond to changes in the number of hours involved in providing these services (Graph 8).

Graph 8: Average hours per month provided by health service providers to prisoners or staff at ARWCF



* Average of the mid-year and annual 2013 monitoring figures. ** Sept 2014 figures only. ***2015 April only.

5.2.2 Visits to off-site health providers

The average monthly number of prisoners who accessed health services outside of ARWCF increased slightly from 32.9 in 2012 and 2013 to 40 in 2014 and 2015. This could be expected given that the prison population increased by 11% during the year to 31 October 2014. Table 27 shows the number of visits and the range of providers recorded in each monitoring year.

The average number of visits to outside providers was virtually unchanged from 2013, and the number of visits to each clinic showed slight fluctuations, with the exception of Middlemore Hospital A and E with larger fluctuations over the four years. The time involved in these visits also varies widely across the years with no obvious relationship to number of visits.

Table 27: Visits to external health service providers by ARWCF prisoners (average per month)

Service	Number of visits				Number of hours for each service		
	Baseline 2012	2013 ⁵⁵	2014 ⁵⁶	2015	2013 ⁵⁵	2014 ⁵⁶	2015
Manukau Super Clinic	15.3	16	17	11	15	20	13
Middlemore Hospital A&E	3.6	10	5	12	28	39	17 (+24nights)
Radiology	11	8.5	11	2	7	12	2
Others ⁵⁷	3	4.5	7	15	9	14	13
Total number of visits	32.9	39	40	40	59	85	45+nights

Source: ARWCF Health Clinic.

⁵⁵ Average of the mid-year and annual 2013 monitoring figures.

⁵⁶ Sept 2014 figures only.

⁵⁷ Other services includes limb centre, Greenlane Hospital, audiology, private surgery, diabetes eye clinic, fertility associates, Takanini A&E, Tauranga Hospital. 2015 Others include St John Ambulance, Dr Allans, Auckland surgery, ADHB & Greenlane hospital.

5.2.3 Mason Clinic inpatients and outpatients

The number of inpatients admitted from ARWCF was 2 in the monitoring month, out of the five admissions from all sources. This is a sizeable proportion of new admissions and is higher than previous years, and this proportion has been increasing each year since 2013. The prevalence of ARWCF patients out of the total number of all in-patients has not been asked.

The number of prisoners as outpatients (forensic prison team) from ARWCF has risen steadily over the four years (from 33 in 2013 to 46.3 in 2015). New referrals from ARWCF have increased from 4.9 per month in 2014 to 25 per month in 2015. Despite this large increase in new referrals, the number of prisoners on the acute-Mason wait list and sub-acute wait list are only marginally up on 2014 levels but still lower than 2012 levels. The increase in prisoner referrals has not affected the wait times which have improved or been maintained over the monitored years.

Table 28: Mason Clinic caseload and waiting times (over the monitoring month)

Patient category	2012	2013 ⁵⁸	2014 ⁵⁸	2015 ⁵⁹
Total number of all in-patients at Mason Clinic at the end of the monitoring month	106	105	105	108
Number of in-patients admitted (from anywhere) to Mason Clinic over the monitoring month	Not asked	15.5	7	5
In-patients admitted to Mason Clinic from ARWCF	0	1	1	2
Prisoners on outpatient (forensic prison team) caseload from ARWCF	33	40.7	39.6	46.3
New referrals from ARWCF	3.6	3.3	4.9	25
Prisoners on acute-Mason wait-list	14.8	7.6	8.3	11
Acute wait-listed patients not admitted within 6 weeks	7.2	2.2	0.5	1
Prisoners on sub-acute wait-list	5.8	5.6	0.4	1
Sub-acute wait-listed patients not admitted within 3 months	4.4	3.7	0	0

Source: Mason Clinic.

⁵⁸ Average of the mid-year and annual monitoring figures.

⁵⁹ Mid-year figures only.

5.3 Demands on primary health clinics

There are 18 health clinics in Manurewa. Of these, four have been selected for monitoring. These clinics offer free or low-cost primary health care and a range of specialist services that are commonly required by prisoner families, i.e. drug and alcohol, mental health and psychological care. It is anticipated that these clinics may be disproportionately affected by any increase in demand for health services resulting from the families of prisoners in the ARWCF or the ASCF – Kohuora moving to the area to be closer to a prisoner.

Raukura Hauora O Tainui still provides a range of low-cost specialist services which are likely to be required by prisoners and their families and therefore this clinic is also included in the monitoring programme.

5.3.1 Numbers of enrolled patients at each clinic

Three of the four primary health care clinics being monitored experienced an increase in patient numbers in 2014 compared with the previous year. The exception was Te Puea Marae clinic which also experienced a reduction in patient numbers between 2012 and 2013. The biggest increase was experienced by the Healthcare Trust Clinic. In 2015, Manurewa Marae had a similar total number of patients as per 2014.

Table 29: Number of patients by clinic and rate of patient turnover (actual and average per month)

Clinic	Total patients enrolled at 31 October				Average new enrolments per month				Patients leaving – average per month			
	2012	2013 ⁶⁰	2014 ⁶⁰	2015 ⁶¹	2012	2013 ⁶⁰	2014 ⁶⁰	2015 ⁶¹	2012	2013 ⁶⁰	2014 ⁶⁰	2015 ⁶¹
Te Manu Aute Whare Oranga Community Clinic, Manurewa Marae	1,204	1,250	1,289	1284	39	43	50	25	0	10	10	18
Trust Health Care, Raukura Hauora O Tainui	3,473	3,449	4061	-	63	99	183	-	52	60	28	-
Clendon Medical Clinic, East Tamaki Healthcare	2,476	2,164	2417	-	20	35	93	-	0.3	5	12	-
Te Puea Marae Clinic, Raukura Hauora o Tainui	1,557	1,270	1055	-	26	23	16	-	10	18	7	-
Total	8,710	8,133	8,822	-	148.0	200.8	342	-	62.3	92.7	57	-

Source: East Tamaki Health Clinic and Manurewa Marae.

It was unknown whether any of the clients treated during the periods by any of the four clinics were from families with a prisoner at ARWCF.

⁶⁰ Average of the mid-year and annual monitoring figures.

⁶¹ Mid-year figures only.

5.3.2 Specialist services at Raukura Hauora O Tainui

There is no 2015 data to update this section beyond the 2014 report.

Raukura Hauora O Tainui data on the use of its specialist services, relative to staff capacity, is shown in the Table 30 below. During 2014 the clinic expanded its services by adding a youth mental health service. This lies behind some of the increase in both the Drug and Alcohol and the Mental Health Service. The clinic also added two new programmes dealing with gambling addiction, and this has resulted in a dramatic increase in the number of patients treated in that area. Psychological service figures also rose significantly. The total number of patient treatments increased 174% relative to 2013 (note that this does not represent the total number of patients since some people access more than one service). The number of patients served by each staff member increased from six to 15 on average.

The figures in Table 30 are the averages of the two monitoring periods in each of 2013 and 2014, which disguises some significant variations. In 2014, the number of staff employed to deliver mental health services increased from 14 in April to 24 in October (as youth mental health services were added). The number of clients treated by the drug and alcohol service declined from 290 in April to 233 in October, while the number treated by psychological services increased from 3 to 63. Raukura Hauora O Tainui reported in October that during the three previous months, 15 potential patients had been declined and/or placed on a waiting list due to demand exceeding capacity (6 declined and 9 on waiting list).

One area that appears to be under particular pressure is gambling addiction treatment. As shown by the table below, six staff were responsible for treating 300 patients.

Table 30: Raukura Hauora O Tainui clinics: patient and staff numbers for specialist services (monthly average)

Service	Number of patients			Number of staff			Number of patients per staff		
	2012	2013 ⁶²	2014 ⁶²	2012	2013 ⁶²	2014 ⁶²	2012	2013 ⁶²	2014 ⁶²
Drug and alcohol services	63	79	262	25	22	25	2.5	3.6	10.7
Mental health services	57.3	88	191	18	19	19	3.2	4.6	10.0
Psychological services	0	0.9	33	0	1	2	0	0.9	22
Gambling addiction	N/A	119	300	N/A	6	6	N/A	19.9	50
Total	120.3	287	785	43	48	51	2.8	6.0	15.4

Source: Raukura Hauora O Tainui.

⁶² Average of the mid-year and annual monitoring figures.

Table 31 shows the number of patients referred by Raukura Hauora O Tainui clinics to other social service providers. The referrals for housing-related and domestic violence-related issues have remained fairly constant over the time of the monitoring but the numbers referred to addiction-related services has dropped dramatically. This can be attributed to the clinic's expansion of its own drug and alcohol and gambling addiction services.

Table 31: Number of patients requiring referrals to social service providers (average per month)

Referrals for:	April 2013	October 2013	April 2014	October 2014
Housing-related issues	7	Not recorded	7	8
Domestic violence issues	3	Not recorded	7	6
Addiction issues	215	567	290	23

Source: Raukura Hauora O Tainui

Raukura Hauora was unable to verify whether any of the clients treated in 2014 were from families with a prisoner at ARWCF.

Specialist services from Te Manu Aute Whare Oranga Community Clinic

Table 32 shows the number of clients from Te Manu Aute Whare Oranga Community Clinic who were referred to specialist services during the monitoring period. Note that the clinic does not offer these specialist services directly but has whānau ora workers who help clients to access these services at other agencies.

Table 32: Te Manu Aute Whare Oranga Community Clinic (Manurewa Marae): patient and staff numbers for specialist services (average per month in 2014)

Service	Number of patients
Drug and alcohol services	1
Mental health services	1
Psychological services	8
Gambling addiction	1
Total	11

5.4 Stand Children’s Services (formerly Pakuranga Health Camp)

The number of children referred to Stand Children’s Services by community or school social work services and GPs during the monitoring period decreased from an average of 40.8 per month during 2013 to 16.5 during 2015. The number of children accommodated at the Stand Children’s Auckland Village increased in 2015 to 31.8 per month (from 24 per month in 2014). Only one child with a caregiver imprisoned at ARWCF were using the services of this organisation in 2015 across the whole six month monitoring period (therefore one of 99 referrals and one of 191 children at Stand Children’s Auckland Village). This has continued a decline in all previous years of service use by the children of ARWCF prisoners. Table 33 provides further details.

Table 33: Stand Children’s Services caseload associated with ARWCF

Referrals and enrolments	2012	2013 ⁶³	2014 ⁶⁴	2015 ⁶⁵
Total referrals during the monitoring period per month	35	40.8	19	16.5
Number of those children who are connected to a prisoner at ARWCF over the six month period	1.3	0.6	0.3	1
Number of children at Stand Children’s Auckland Village during the monitoring period per month	Not asked	23.3	24	31.8
Number of those children who are connected to a prisoner at ARWCF over the six month period	7	3	2	1
Total number of requests for parent intervention over six month period	Not asked	4.0	6.9	37
Number of parent interventions that were for children connected to a prisoner at ARWCF over six month period	7	0	0	1
Total number of children offered social skills programmes over the six month period	Not asked	4.1	24.1	33
Number of those children who have a connection to a prisoner at ARWCF	1	3	2	1
Total number of children enrolled in the grief and loss programme over the six month period	Not asked	3.2	0.9	5
Number of those children who are connected to a prisoner at ARWCF over the six month period	1	2	1	0
Total number of families provided with a Needs Assessment per month	Not asked	40.0	18.4	14
Number of those families who are known to have moved to South Auckland to be closer to a prisoner at ARWCF	Not asked	0	0	0

⁶³ Average of the mid-year and annual 2013 monitoring figures. Some questions were added to the questionnaire after the mid-year monitoring period in 2013. In such cases, the figure for the end-of-year monitoring period has been used.

⁶⁴ Average of the mid-year and annual 2014 monitoring figures.

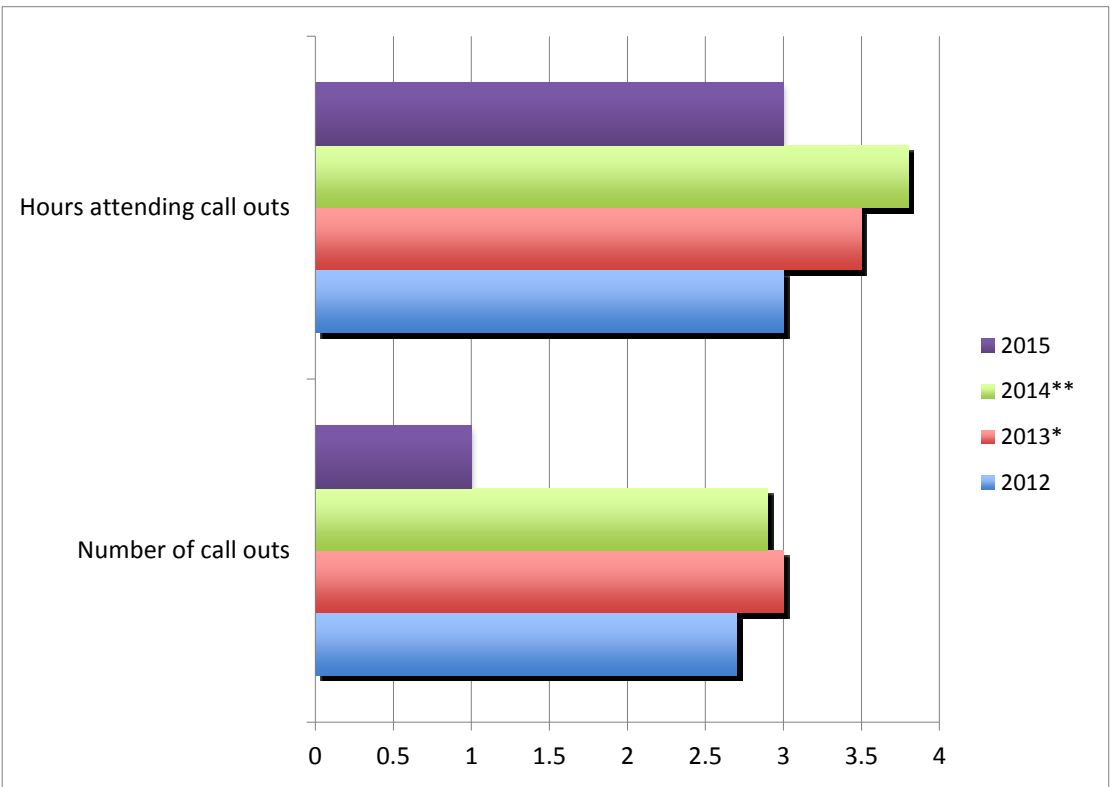
⁶⁵ Mid-year only.

5.5 St Johns Ambulance

The number of callouts from ARWCF to St Johns Ambulance was similar in 2012-2014 (2.5-3 per month) though dropped to 1 per month in 2015. The time involved in attending these callouts, however, shows a steady increase from 3 hours in 2012 to almost 4 hours in 2014, but back to 3 hours in 2015. The majority of incidents occurred during the day time (between 7am and 7pm). There were no callouts recorded to families of ARWCF prisoners.

Of all the adult prisons in the Auckland region, ARWCF had the lowest number of callouts over the 12 months to October 2014 and reflecting that, the smallest amount of total time involved in attending callouts at Corrections facilities (with the exception of the Auckland Youth Justice Residence).

Graph 9: St Johns Ambulance callouts (monthly average)



5.6 Health services provided to the Korowai Manaaki Youth Justice Facility

The number of consultations by health service providers to the Youth Justice Facility (opposite ARWCF and ASCF) has varied substantially over the monitoring years. For example GP or nurse consultations at the facility have varied from 288 to 583 per month, while mental health consultations have risen to 36 per month in 2015. The number of hours involved in GP or nurse consultations was much reduced in 2014 and 2015 indicating a substantial change in the nature of visits between the two years. Mental health hours have increased in line with the increase in consultations.

Table 34: Youth Justice Facility: onsite consultations by health service providers

Type of Service	Number of onsite consultations				Hours involved			
	2012	2013 ⁶⁶	2014 ⁶⁶	2015	2012	2013 ⁶⁶	2014 ⁶⁶	2015
PHO (GP or nurse)	295	583.5	288	329	240.0	285	169	165
Mental health	8.3	14	8	36	80.0	25	30	120
Other ⁶⁷	3.3	58	64	42	6.6	47.5	52	34
Total	307	656	360	407	327	358	251	319

Residents of the YJF also made significantly fewer visits to off-site health providers than during the 2013 monitoring months, as shown in Table 35. The total number of visits was less than half that recorded in 2013 and more in keeping with the figure recorded in 2012.

Table 35: Youth Justice Facility: Off-site treatments (average per month)

Facility	2012	2013 ⁶⁸	2014 ⁶⁸	2015
Takanini Medical Centre / A and E	6	16	5	3
Middlemore Hospital	9	0	2	1
St Johns Ambulance	2	0	0	-
Dental services	2	30	6	8
Optometrists	0	1	1	1
Audiologists	0	1	2	8
Manukau Superclinic	0	1	3	1
Leabank Medical Centre	-	-	1	-
Middlemore Burns Unit	-	-	2	-
Family Planning				1
Total (average per month)	19	47	22	23

No cases of infections were recorded among YJF residents during April, October 2014 and April 2015, compared with an average of 18 per monitoring month in 2013 and none in 2012. The YJF did not experience any significant delays in obtaining the health services it required, as was also the case in previous monitoring periods.

⁶⁶ Average of the mid-year and annual monitoring figures.

⁶⁷ 'Other' in 2013 included physio visits and rehabilitation/weight loss trainer visits; in 2014 it included physio and personal trainer visits; in 2015 it included Physio and Personal trainer visits.

⁶⁸ Average of the mid-year and annual monitoring figures.

6. Local employment and economy

Section summary – what does the data say about local employment and the economy in relation to Corrections facilities

ASCF construction workforce: Over the course of the construction about 14% of the construction workforce lived locally and a further 31% lived in the remaining areas of Counties Manukau (totalling 45%). The majority of the balance (51%) travel from other areas in Auckland. In 2014, just 7 out of every 100 construction workers who lived locally (see above) had moved into the local area, suggesting the majority already lived locally before employment. The period of time that construction workers expected to be employed on the site shortened in 2014 compared with 2013, as would be expected with the construction nearing completion. This data supports the hypothesis that the ASCF construction workforce had a potential effect on short-term employment in the local area.

Employment training opportunities for ARWCF prisoners: The number of prisoners on the various release to work placements, numbers of prisoners in work training schemes has varied throughout the years, but is similar between 2012 and 2015. This is despite the number of employment related courses at ARWCF declining from 16 in 2012 to 6 in 2015. This data supports the hypothesis that the ARWCF has a very small potential effect on employment opportunities locally.

Overall assessment: With nearly half of the construction workforce living in the local area or in Counties Manukau, the ASCF construction workforce has had a potential effect on short-term employment in the local area. Whereas prisoners on release to work programmes from ARWCF have had a very low potential effect on employment opportunities locally.

6.1 Employment opportunities at the Corrections facilities

6.1.1 ASCF – Kohuora construction workforce

As part of their induction, workers on the ASCF – Kohuora construction site complete a survey for this social impact monitoring exercise. Contractors and staff on the site come and go as the construction moves through different phases, each phase requiring a different mix of skills.

From the beginning of the construction in November 2012 to the end of October 2014 a total of 3,834 people have been employed in some capacity on the site. Between 1 November 2013 and 31 October 2014 a total of 1,352 new employees were inducted onto the site, all of whom completed the workforce questionnaire for the SIMP. Construction was complete by 2015 and the prison opened in May 2015. There is no 2015 data to update this section beyond the 2014 report.

The period of time that construction workers expected to be engaged on the site has continued to shorten, as is expected with the construction now nearing completion. Of the new workers employed in the 12 months to 31 October 2014, 42% of valid respondents (i.e. with non-respondents excluded) answered “less than three months”; 20% answered “3 to 6 months” and 19% answered “6 to 12 months”.

Note that following the May – October 2013 monitoring period the “don’t know” option was removed from the questionnaire. This will explain some of the increases in other categories after that date.

Table 36: Expected duration of employment period for ASCF construction workforce

ASCF workforce segment	Expected duration of employment				
	Less than 1 year	1-2 years	More than 2 years	Don't know	No response
Employed before 1 May 2013	13%	31%	20%	33%	2%
Employed between 1 May and 31 Oct 2013	34%	26%	8%	24%	8%
Employed between 1 Nov 2013 and 31 Apr 2014	68%	17%	6%	N/A	9%
Employed between 1 May and 31 Oct 2014	74%	12%	5%	N/A	9%

The residential distribution of the construction workforce is shown in the following table and graph. The table shows that throughout the construction period over 1,300 workers (42% of the total workforce) have been resident in either Manurewa or the wider Counties-Manukau area.

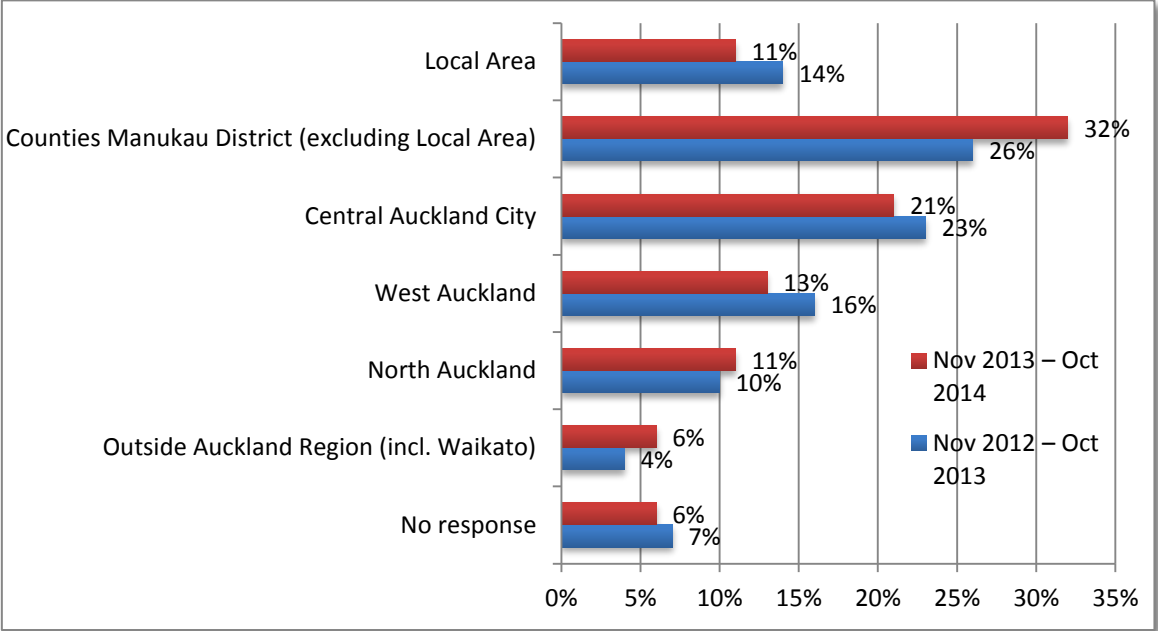
The proportion of workers living in the local area fell slightly compared with the previous 12 month monitoring period. This may be attributable to the change in the duration of employment available at the site, as shown in Table 36 above. New workers who expected to be employed for only a few months would be less likely to consider moving to be near the site. Also, it is likely that the finishing work on the facility required a higher level of specialist skills that needed to be recruited from contractors outside the local area.

Table 37: Place of residence of ASCF construction workforce

Place of residence	Number of respondents		
	Nov 2012 – Oct 2013	Nov 2013 – Oct 2014	Total
Local Area ⁶⁹	256 (15%)	151 (12%)	407 (14%)
Remainder Counties Manukau (excl. Local Area)	485 (28%)	432 (34%)	917 (31%)
Central Auckland City	427 (25%)	285 (22%)	712 (24%)
West Auckland	305 (18%)	171 (13%)	476 (16%)
North Auckland	178 (10%)	152 (12%)	330 (11%)
Outside Auckland Region	78 (5%)	40 (3%)	118 (4%)
Franklin District / Waikato	-	40 (3%)	40 (1%)
No response	122	81	203
Total	1,851	1,352	3,203

⁶⁹ Includes Wiri, Manurewa, Manukau City, Clendon, Homai, Weymouth, and Wattledowns.

Graph 10: Place of residence of ASCF construction workforce



In 2014, 10 of the 151 newly recruited workers who lived in the local area said they had moved to be close to the construction site (as opposed to having been resident in the area prior to starting work at the site).

Data on ARWCF housing is presented in Section 2.

6.2 Employment and training opportunities for ARWCF prisoners

The number of ARWCF prisoners on work training schemes with external employers increased to eleven in 2014 (monthly average) before reducing to 8 in 2015. The number of prisoners in Work Training schemes (including numeracy and literacy) increased to 266 per month in 2014 before decreasing to 150 per month in 2015 (still higher than 2012 levels of 117 per month). The number of prisoners waiting for Release to Work pre-approvals has increased from 1 in 2012 to 4 in 2015. The number of employment related training courses has decreased from 16 to 6 over the four years tracked.

Table 39: Work placements and training opportunities available to ARWCF prisoners (monthly average)

Activity	Number of prisoners (average per month)			
	2012	2013 ⁷⁰	2014	2015
Prisoners who are on Release to Work placements with an external employer	5	6.5	11	8
Prisoners waiting for Release to Work placements (pre-approvals)	1	1.5	4	4
Prisoners in Work Training schemes/courses within the prison (including numeracy and literacy)	117	192	266	150
Number of employment-related training courses being run in the prison	16	Information not provided	11	6

6.3 Demand for local goods and services

Previous reports have included a table showing the proportion of expenditure by ARWCF on goods and services purchased from the local area. The Department has advised that this information was incorrect and that the method of recording invoice payments does not readily enable the location of that expenditure to be identified. As a result of this advice, no information on benefits for the local area resulting from expenditure related to the ARWCF was able to be reported in the 2014 or 2015 monitoring report.

⁷⁰ Average of the mid-year and annual 2013 monitoring figures except for the third row, which is for April only.

7. Community safety and wellbeing

Section summary – what does the data say about community safety and wellbeing in relation to Corrections facilities

Crime rates: Between 2012 and 2014 the number of drug offences remained largely unchanged, whereas rates for wilful damage and disorder (including violence) decreased. It was unknown if any of the cases listed involved a family member of a prisoner at ARWCF, or a probationer from that facility. Therefore the data do not support or reject a hypothesis that ARWCF has a potential effect on crime rates in the local area.

Domestic violence: The rate of ARWCF-related domestic violence callouts to Police was 1.5 per 1000 callouts. Over the three years of monitoring (2012-2014) Pillars received just one care and protection call related to ARWCF. South Auckland Family Refuge received 176 calls for support in 2014, of which 3 (1.7 per 100 calls) were related to ARWCF. The data support the hypothesis that ARWCF has a very low potential effect on domestic violence services in the local area.

Community probation compliance: There is no data specific to ARWCF offenders on community sentences in Manukau District. Therefore data do not support or refute a hypothesis that ARWCF has a potential effect on community probation compliance in the local area.

Graffiti vandalism: The total number of tagging sites attended to by the Manukau Beautification Society has decreased from 1,088 incidents in 2012 to 696 incidents in 2015. No links to people associated with ARWCF were identified among the perpetrators. Therefore data neither supports nor refutes the hypothesis that ARWCF is potentially associated with the number of graffiti vandalism incidents in the local area.

Gang presence in the local community: The total number of all children identified (at schools by schools) as having a gang association declined from at least 169 (in 2012) to at least 67 (in 2014). The number of children identified as having a gang association and a caregiver who is a prisoner at ARWCF also declined, from at least 14 in 2012 to at least 6 in 2014 (9% of total). Despite the decline in total and ARWCF numbers of children identified as having a gang association, an increasing proportion of respondents to the youth survey disliked gangs and gang recruitment (19% in 2012, 20% in 2013, and 27% in 2014). Across both pieces of data, the data supports a hypothesis that ARWCF has a potential effect on the number of children identified as having a gang association in the local area.

Probation services: The average number of parolees and offenders on release conditions in Manurewa has ranged between 164 and 188 per month across the four years monitored. In contrast the monthly average number of offenders from ARWCF who are on parole and release conditions is low (e.g. 1.5 in 2015). This calculates to less than 1 in 100 parolees or offenders on release conditions being from ARWCF in the local area. This data supports the hypothesis that ARWCF parolees or offenders on release conditions have a very low potential effect on the local area.

Rehabilitation services: The number of prisoners receiving rehabilitation services has increased since the beginning of the monitoring period (37 in 2012) to the latest year of monitoring (48 in 2015). Hours provided by services have also doubled, largely driven by increased numbers and hours of the Kowhiritanga programme (aiming to help offenders examine the cause of their offending and develop specific skills to prevent them re-offending). The type of courses offered change each year, making monitoring of individual courses difficult. This data supports the hypothesis that the ARWCF potentially affects rehabilitation service providers.

Workload for local police from ARWCF: The number of callouts to investigate crimes at ARWCF was 1.2 per month in 2014, along with a monthly average of 2.5 open Police enquiry files. This data supports the hypothesis that ARWCF has a low potential effect on police workloads in the local area.

Access to hardship payments, accommodation supplements and pre-school transport: There is no data available about these grants regarding prisoners leaving ARWCF. Therefore the data neither supports nor refutes a hypothesis that ARWCF potentially effects access to grants in the local area.

Community pride: This data does not relate to ARWCF. Therefore the data does not support or refute a hypothesis that ARWCF potentially effects community pride.

Patronage of facilities by ARWCF and ASCF construction workforce: The ARWCF staff survey identified that 41 of the 209 staff surveyed used one or more of the three community facilities being monitored. When compared to the annual general public usage (336,000 Te Matariki Clendon library visits; 180,000 Manurewa Pool and Leisure Centre visits; and over 20,000 Manurewa Recreation Centre visits), the effect of the ARWCF on these facilities is negligible. The same was true for the 74 ASCF Construction Workforce staff who said they used one or more of the facilities. This data supports the hypothesis that ARWCF and ASCF staff has a very low potential effect on patronage of facilities in the local area.

Overall assessment: *The data supports the hypothesis that ARWCF has a potential effect on rehabilitation service providers and on the number of children identified as having a gang association. The data supports the hypothesis that ARWCF has a very low or low potential effect on domestic violence services, the number of parolees or offenders on release conditions, police workload from the AWCRF site itself, patronage of local community facilities. The data neither supports nor refutes a hypothesis that ARWCF has a potential effect on local crime rates, community probation compliance, graffiti vandalism, access to hardship payments, community pride.*

7.1 Background

Community safety and wellbeing are monitored through a wide range of indicators including crime rates, graffiti and vandalism, domestic violence, gang presence, prisoner probation and rehabilitation, workloads for local police, poverty levels, community pride and the use of community facilities.

7.2 Crime rates

There is no 2015 data to update this section beyond the 2014 report.

Table 41 shows the number of reported incidents in Manurewa in three specific categories as recorded by the NZ Police. The number of drug offences remained largely unchanged between 2012 and 2014, whereas wilful damage and disorder (including violence) decreased between 2012 and 2014. The most notable decrease was a 50% decrease in wilful damage from 96 per month (in 2013) to 34 (in 2014).

None of the cases listed in the table were known to involve a family member of a prisoner at ARWCF, or a probationer from that facility.

Information on incidents of domestic violence is provided in section 7.2, and information on truancy is

provided in section 3.3.

Table 41: Selected crime incidents in Manurewa as recorded by NZ Police (monthly average)

Type of incident	2012 ⁷¹	2013 ⁷²	2014 ⁷²
Drug offences	25	29	24
Wilful damage	78	70	52
Disorder (including violence)	44	96	34

7.3 Domestic violence

There is no 2015 data to update this section beyond the 2014 report.

The number of domestic violence callouts attended by the Manurewa Police each month was almost identical to that recorded during 2013, which was slightly higher than the figure recorded in 2012 (Table 42). The number of incidents involving families with links to ARWCF prisoners was unknown.

The Police questionnaire asks for the number of domestic violence cases (to which Police are called) that involve, either directly or indirectly, an inmate of ARWCF. Police responded that while this information is difficult to provide, the local Family Violence Co-ordinator is confident that the number would be four to five incidents over the course of the year. Given there were 287 incidents in one month, the annual percent related to ARWCF is 1.5 per 1000 incidents.

Table 42: Domestic violence incidents recorded in Manurewa by NZ Police (monthly average)

Type of incident	1 Aug 2012 to 31 Oct 2012	1 Nov 2012 to 31 Oct 2013	1 Nov 2013 to 31 Oct 2014
Number of call outs for domestic violence	255	290	287
Number of domestic violence cases involving parolees or STSs from ARWCF ⁷³	1.5	1.5	Unknown

Source: New Zealand Police.

During the April 2014 monitoring month **Pillars** received one Care and Protection call related to ARWCF. No such calls had been recorded during previous monitoring periods, nor were any received during the October 2014 monitoring period.

South Auckland Family Refuge received 106 calls to the Auckland Crisis Line in April 2014 and 70 in October 2014 – an average of 88 per six months – compared with 99 in the 2013 six month period. Three of the calls in the first six month monitoring period in 2014 involved people with connections to ARWCF (unknown for October). This calculates to 1.7 ARWCF connected people per 100 calls.

The refuge provided an average of 421 bed-nights in 2014 (293 in April and 549 in October) compared with 412 in October 2013 (see section 2.3.1).

The refuge responded to an average of 15 Pol400 referrals⁷⁴ per month (11 in April and 19 in October) compared with 27 in October 2013.

⁷¹ Monitoring period covered 1 August 2012 to 31 October 2012.

⁷² Average of the mid-year and annual monitoring figures.

⁷³ Estimated by the Family Violence Coordinator.

⁷⁴ Pol400 referrals are referrals from the Police to a particular agency to provide on-going support for a family or individual. There are 19 agencies in Manurewa who are open to receiving these types of referrals.

No information was available on how many of the bed nights or Pol400 referrals involved an individual or family with a connection to ARWCF.

7.4 Graffiti and vandalism

The total number of tagging sites attended to by the **Manukau Beautification Society**⁷⁵ has decreased from 1,088 incidents in 2012 to 696 in 2015⁷⁶. Clendon Park has experienced a small increase in incidents between 2012 and 2015 whereas Weymouth and Manurewa Central have experienced substantial declines. No links to people associated with ARWCF were identified among the perpetrators.

The NZ Police did not report on instances of graffiti in their returns for 2014.

Table 43: Tags removed by Manukau Beautification Society (average per month)

Suburb	Number of incidents of tagging/graffiti removed			
	2012	2013 ⁷⁷	2014 ⁷⁸	2015 ⁷⁹
Weymouth	52	56	82	35
Clendon Park	121	109	192	142
Manurewa Central	916	574	595	519
Total	1,088	739	869	696

Source: Manukau Beautification Society.

7.5 Gang presence in the local community

Information on the presence of gangs was obtained from the participating schools, temporary accommodation providers, the NZ Police, the Youth Survey and the RTLB Unit.

In 2014, five of the nine participating schools noted a gang presence amongst students at their schools (Manurewa Intermediate was left out of this table because the school recorded 150 students in the first monitoring period and “unknown” in all subsequent periods, which would otherwise skew the aggregate data). The number of such students reported in both periods was far lower than in 2012; however these figures should be treated with caution given the uncertainty around this data illustrated by the “unknown” responses. The proportion of pupils known by school staff to have gang associations and also known to have caregivers at ARWCF was less than the previous year: 9% in 2014, 14% in 2013 and 8% in 2012.

⁷⁵ Manukau Beautification Society covers three suburbs in the local area: Weymouth, Clendon Park and Manurewa Central.

⁷⁶ The figures show the number of incidents where tagging/graffiti was removed from a particular area, not the number of individual tags (which can be much higher since there may be many tags on one site).

⁷⁷ Average of the mid-year and annual 2013 monitoring figures.

⁷⁸ Average of the mid-year and annual 2014 monitoring figures.

⁷⁹ Average of mid-year figures

Table 44: Students identified with gang associations – 8 of the 9 monitored schools

School	Students identified as having gang associations				Students with gang associations and a care giver who is a prisoner at ARWCF			
	Baseline 2012	2013 ⁸⁰	2014 ⁸¹	2015 ⁸²	Baseline 2012	2013 ⁸⁰	2014 ⁸¹	2015 ⁸²
Clendon Park Primary	29	19	11	11	3	3	2	3
Greenmeadows Int.	Unknown	4	4	-	Unknown	0	0	-
Homai Primary	8	9	Unknown	6	Unknown	Unknown	Unknown	Unknown
James Cook High	Unknown	Unknown	Unknown	-	Unknown	Unknown	Unknown	-
Manurewa High	25 – 30	20	18	Unknown	11	5	4	Unknown
Rongomai Primary	17	12	12	-	0	1	0	-
Waimahia Int.	N/A	0	10	-	N/A	Unknown	Unknown	-
Wiri Central	90	5	12	-	0	1	Unknown	-
Total	At least 169	At least 69	At least 67	At least 17	At least 14	At least 10	At least 6	At least 3

-: Data not available

As for the two previous years, neither of the emergency / temporary accommodation facilities surveyed had occupants who were known to have gang affiliations.

Respondents to the youth survey were asked what they disliked about living in Manurewa. This was an open question with no prompting. As in the two previous year's gangs and gang recruitment was a significant factor. The proportion of respondents mentioning this has increased each year, from 19% in 2012, to 20% in 2013, to 27% in 2014.

Respondents were also asked what they disliked about their schools (again unprompted). The presence of *gangs / gang recruitment / gang wannabes* in schools was a factor mentioned by a small proportion (2% in 2012 and 3% in both 2013 and 2014).

Of the 479 referrals to the RTLB Unit between November 2013 and October 2014 (average of 40 per month), a total of nine were known to have gang connections (less than one per month on average). It was unknown whether any of these students had a caregiver at ARWCF.

The NZ Police was unable to provide figures on the number of gangs or gang members in the local area. The Police were able to tell us that Manurewa has no gang "pads" or headquarters.

80 Average of the mid-year and annual 2013 monitoring figures. In some cases a figure was unknown for one or other monitoring period. In such cases the single known figure has been presented in this table.

81 Average of the mid-year and annual 2014 monitoring figures.

82 Mid-year figures only.

7.6 Probation services, probation compliance and rehabilitation services

7.6.1 Probation services

During the six months to October 2014 there was an average of nine probation officers responsible for managing offenders on parole and release conditions in Manurewa. This is similar to the average number for the six months to October 2013 (8 officers) and for the six months to April 2013 (8.5).

The table below shows the number of people on parole and on release conditions living in the Manukau District as a whole (including Manurewa), and the numbers in Manurewa as a subset of Manukau.

The average number of parolees and offenders on release conditions in Manurewa has remained fairly static throughout the monitoring period. The monthly average ranges between 164 and 188 across the four years monitored.

The caseload per parole officer in Manurewa (including offenders on parole and on other release conditions) has remained relatively steady through the monitoring period, with small fluctuations due to changes in probationer numbers and staff numbers.

The number of offenders from ARWCF who are on parole and release conditions and who live in Manurewa remained low. Over the four monitoring periods the figure has fluctuated between one and three.

Table 45: Community Probation caseload (monthly average)

Offender category	Manukau District				Manurewa			
	2012	2013 ⁸³	2014 ⁸⁴	2015 ⁸⁵	2012	2013 ⁸³	2014 ⁸⁴	2015
Average number of probation officers	-	-	-	-	8.5	8	9	?
Parolees	242	291	317	323	64 (26%)	84 (29%)	99 (31%)	98 (30%)
Offenders on release conditions	325	345	282	292	100 (31%)	104 (30%)	82 (29%)	86 (29%)
Caseload per parole officer	-	-	-	-	19.3	23.5	20.1	?
Number of parolees and offenders on release conditions from ARWCF	Not recorded	Not recorded	Not recorded		3	0.9	2.0	1.5
Number of new start parolees	Not recorded	18	19	17	7	6.3 (34%)	8.0 (42%)	2.6 (15%)
Number of new starts on release conditions	Not recorded	31	27	30	8	10.7 (34%)	9.3 (34%)	9.2 (31%)
Total new starts	Not recorded	50	46	47	15	16.9 (34%)	17.3 (38%)	11.8 (25%)

Source: Community Probation Service. The percentages on the right of the table show the numbers in Manurewa as a proportion of the total in Manukau.

⁸³ Average of annual 2013 figures.

⁸⁴ Average of figures for June – October only.

⁸⁵ Average Nov – Apr.

7.6.2 Community Probation Compliance

There is no 2015 data to update this section beyond the 2014 report.

Community Probation compliance by offenders in Manurewa improved slightly from 86% (2013) to 93% (2014) but still fell short of the standard set (100%). Visits to released offenders in Manurewa within five days of release fell slightly from 100% to 96%, similar to that achieved in 2012. The reconviction rate for offenders on community sentences in Manukau District was almost unchanged between the three monitoring periods, remaining just above the target of 20%. As was the case in the two previous monitoring periods, Community Probation was unable to provide information on reconviction rates for ARWCF offenders on community sentences in Manukau District.

Table 46: Probation Service Manukau: compliance with standards (monthly average)

Measurement	Goal	Achieved		
		2012	2013	2014 ⁸⁶
Rate of reconviction within a year by offenders on community sentences in Manukau District	20%	24%	24%	23%
Reconviction rate for ARWCF offenders on community sentences in Manukau District	26% ⁸⁷	35% (131)	Not available	Not available
Monitoring and managing conditions of release for offenders in Manurewa	100%	99%	86% ⁸⁸	93%
Visiting released offenders in Manurewa within 5 days of release to ensure accommodation is suitable	100%	97%	100%	96%

Source: Department of Corrections Community Probation.

⁸⁶ Average figures for June – October 2014 only: data for first 6 months of the 2014 monitoring period was not provided.

⁸⁷ This is an approximate figure. All Department of Corrections services are aiming for a 25% reduction in recidivism. Based on this, the target for ARWCF has been calculated at 26% although the reduction targets are applied at a regional rather than facility level.

⁸⁸ The lower percentage reflects new reporting practices introduced in February 2013. The sample size is smaller and focused on higher risk offenders.

7.6.3 Rehabilitation services

The number of prisoners receiving rehabilitation services has increased since the beginning of the monitoring period (37 in 2012) to the latest year of monitoring (48 in 2015). Hours provided by services have increased, doubling from 345.5 hours in 2012 to 746 hours in 2015. These increases have been driven by increased numbers and hours of the Kowhiritanga programme. This programme aims to help offenders examine the cause of their offending and develop specific skills to prevent them re-offending.

The nature of the services provided has also changed significantly between the monitoring periods. In 2014 there was a significant increase (43%) in the number of hours allocated to programmes addressing Alcohol and Drug addiction.

Table 47: Rehabilitation services provided at ARWCF (average per month)

Type of service	Number of prisoners receiving services				Total hours provided by each service			
	2012	2013	2014	2015	2012	2013	2014	2015
Kowhiritanga (2 programmes)	10	15	20	20	300	400	622	715
Short Motivational Programmes (6)	1	3	4	2	1.5	6.5	10	5
Maintenance	2	1	0	0	4	2	0	0
Alcohol and Other Drugs (AOD)	24	16	23	-	40	180.5	257.5	-
Total	37	35	47	48	345.5	589	889.5	746

Source: ARWCF.

The numbers for 2012 and 2013 have changed significantly from previous reports due to a detection of errors in the recording of data. The figures in table 47 are now correct for all years.

The number of prisoners undertaking these rehabilitation courses during 2013 and 2014, and the number of hours involved in these courses, are shown in the following table. What is clear is that the courses on offer may stop and new courses start on a regular basis, making monitoring difficult at this detailed level.

Table 48: Rehabilitation courses run at ARWCF (average per month)

Course	Number of tutor hours			Number of prisoners on each course		
	2013	2014	2015	2013	2014	2015
Short Gains	54	26	20	20	15	88
Work Ready ⁸⁹	77	41	72	20	15	17
Foundation programme	1	No longer provided	-	24	-	-
Get Ahead	41	97	-	39	47	-
Smart Choices	29	No longer provided	-	31	-	-
Brain Gym	104	No longer provided	-	87	-	-
Keep your life on track	Not recorded	24	-	-	19	-
Employment related training (e.g. numeracy and literacy) ⁹⁰	Not recorded	Not recorded	-	192	266	150
Open polytech / self-directed learning ⁹¹	-	-	-	29	3	21
Target Training – Employment Skills	-	-	22	-	-	12
Target Training – Service Industries	-	-	20	-	-	13
CV writing	-	-	36	-	-	18
101 Workshops	-	-	28	-	-	40
Skills for Life	-	-	16	-	-	7
The Learning Connection - Art	-	-	18	-	-	15-20
Mentoring	-	-	8	-	-	6
Total	306	188	240	442	365	375

Source: ARWCF.

⁸⁹ Includes computer training, drivers licence.

⁹⁰ Repeat of figure in table 39.

⁹¹ Only new starts are recorded

7.7 Workload for local police from ARWCF

There is no 2015 data to update this section beyond the 2014 report.

The number of open Police enquiry files involving police investigating existing prisoners at ARWCF was above that of the 2013 monitoring period, but remained below that recorded in 2012 (Table 49). The number of new enquiry files opened for investigation was marginally lower than that recorded in 2013. The number of callouts to ARWCF continued to decline from a monthly average of 3.3 in 2012 through 1.7 in 2013 to 1.2 in 2014. No data on the total number of callouts or total number of case files was asked, which would put this data into context, it is likely to be a low proportion.

Table 49: Criminal investigation caseload associated with ARWCF prisoners

Activity	2012	2013 ⁹²	2014 ⁹³
Total number of enquiry files under investigation involving prisoners at ARWCF	3.7	1.4	2.5
Number of enquiry files opened for investigation of prisoners at ARWCF (monthly average)	0	1.1	0.8
Number of callouts to ARWCF to investigate crimes (monthly average)	3.3	1.7	1.2

Source: NZ Police.

⁹² Monthly average between 1 April 2012 and 31 October 2013.

⁹³ Monthly average between 1 April 2013 and 31 October 2014.

7.8 Access to hardship payments, accommodation supplements and pre-school transport

There is no 2015 data to update this section beyond the 2014 report.

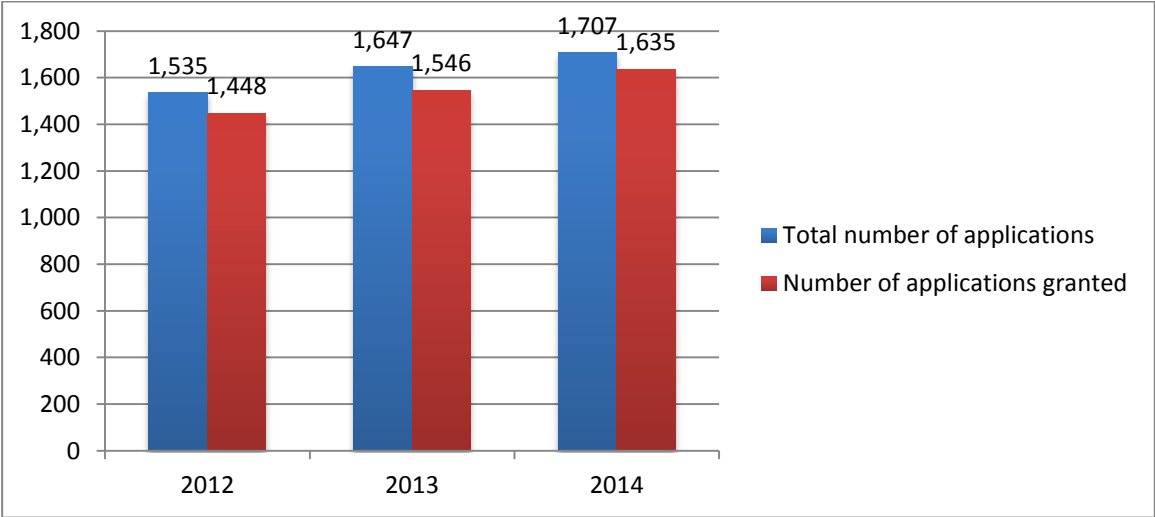
The Ministry for Social Development SD provided data on hardship payment applications received by the Manurewa Service Centre throughout the monitoring year. The figures in the following graphs are a count of applications processed or granted, and not individual clients, since one client may make more than one application. Hardship payments include Advances, Special Needs Grants and Recoverable Assistance Payments. Advances are available to clients already receiving a main benefit who require assistance to meet a particular immediate need for an essential item. Recoverable Assistance Payments are payments to non-beneficiaries to meet essential immediate needs for specific items or services, and which have to be paid back. Special Needs Grants (SNG) are available to help people in certain circumstances pay for something when they have no other way of paying for it, and may or may not be recoverable. Special Needs Grants are not available to cover accommodation, bonds, and tenancy or rent arrears.

For the purposes of this monitoring, data is reported on grants for the total number of Hardship Payments and for Accommodation Supplements. No information was available on the number of these grants directly associated with prisoners leaving ARWCF. However, an indication of the relationship between Corrections facilities in general and the local Manurewa community is provided by the number of total Hardship Payments and accommodation supplements that are approved for people who are also granted Steps to Freedom (STF⁹⁴) payments. This is addressed further in 7.7.2.

7.8.1 Hardship payments

The number of applications for Hardship payments received by the Manurewa Service Centre continued to increase, from an average of 1,535 per month in 2012, through 1,647 in 2013 to 1,707 in 2014. The number granted has also increased throughout the three monitoring years. The proportion of these applications that were approved was slightly greater than in previous periods (96% compared with 94% in both previous years).

Graph 12: Hardship Payments: applications received and granted by Work and Income NZ’s Manurewa Service Centre (average per month)



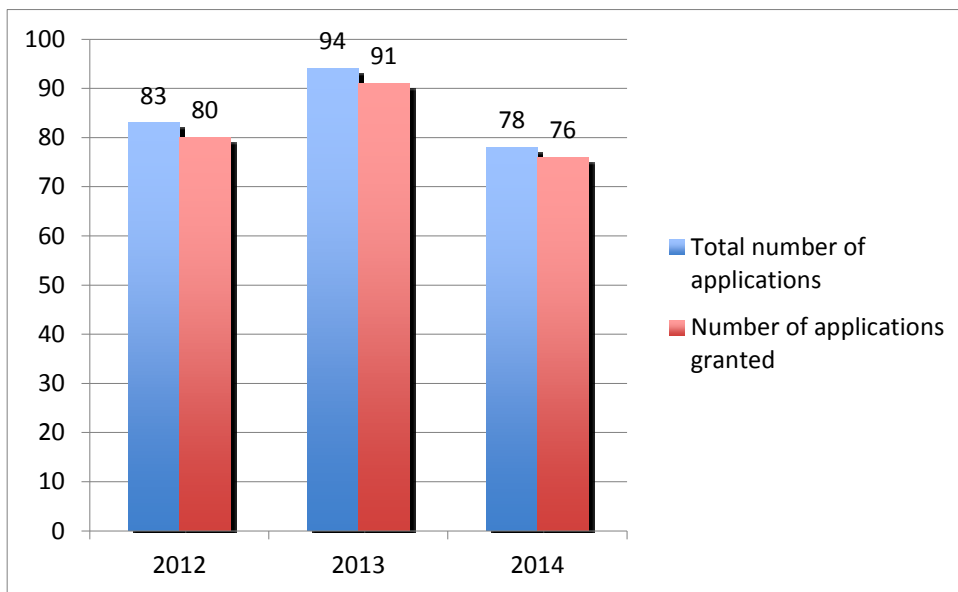
Source: IAP Data Warehouse, prepared by Business Reporting Team, Insights MSD. 12 full months of data in each case. Note: each annual period includes data from the four quarters up to 30 September. For example, the 2012 period includes from 1 October 2011 to 30 September 2012

⁹⁴ The Steps to Freedom Programme provides financial support to probationers and STS to assist their reintegration into society.

7.8.2 Accommodation Supplements

The numbers of Accommodation Supplement applications (both received and approved) were slightly lower than in 2012 and significantly lower than in 2013 (Graph 13). In the average month in 2013, 94 applications were received while in 2014 the figure was 78 (a drop of 17%). The proportion of applications granted in each of the three monitoring periods was very similar: 96% in both 2012 and 2013, and 97% in 2014.

Graph 13: Accommodation Supplements: applications received and granted by Work and Income NZ's Manurewa Service Centre (average per month)



Source: Work and Income, MSD, Head Office

The Ministry of Social Development was unable to provide the number of Hardship Payments approved by the Manurewa Service Centre that were made to people on the Steps to Freedom programme. However the Ministry was able to provide this information for Accommodation Supplement recipients. An average of 3.2 people per month who were approved for the Accommodation Supplement in 2014 also received Steps to Freedom grants (3.5% of the total), compared with an average of 3.3 people per month, or 3.6% of the total, during 2013). The Ministry was not able to identify how many, if any, of the recipients approved by the Manurewa Service Centre had been imprisoned in ARWCF.

7.8.3 Van Participation Programme⁹⁵

Four of the eight Early Childcare Centres participating in the monitoring programme reported that they had pupils whose attendance was facilitated by the Van Participation programme. Together these centres reported 58 children accessing the Programme – an increase of 27 over the 2013 figure. As with previous monitoring periods, none of these children were known to have a caregiver at ARWCF.

⁹⁵ The Van Participation Programme is a free, half-day service that picks up children (3 years plus) from their home and returns them at the end of their pre-school session. Pre-schools work with local support agencies to identify children who (usually for reasons of hardship) would otherwise not have access to pre-school.

7.9 Community pride

There is no 2015 data to update this section beyond the 2014 report.

Two mechanisms were used to assess community perceptions of Manurewa – a youth survey and a question in the school survey regarding reasons for students transferring to other schools.

7.9.1 Young people’s perceptions of Manurewa

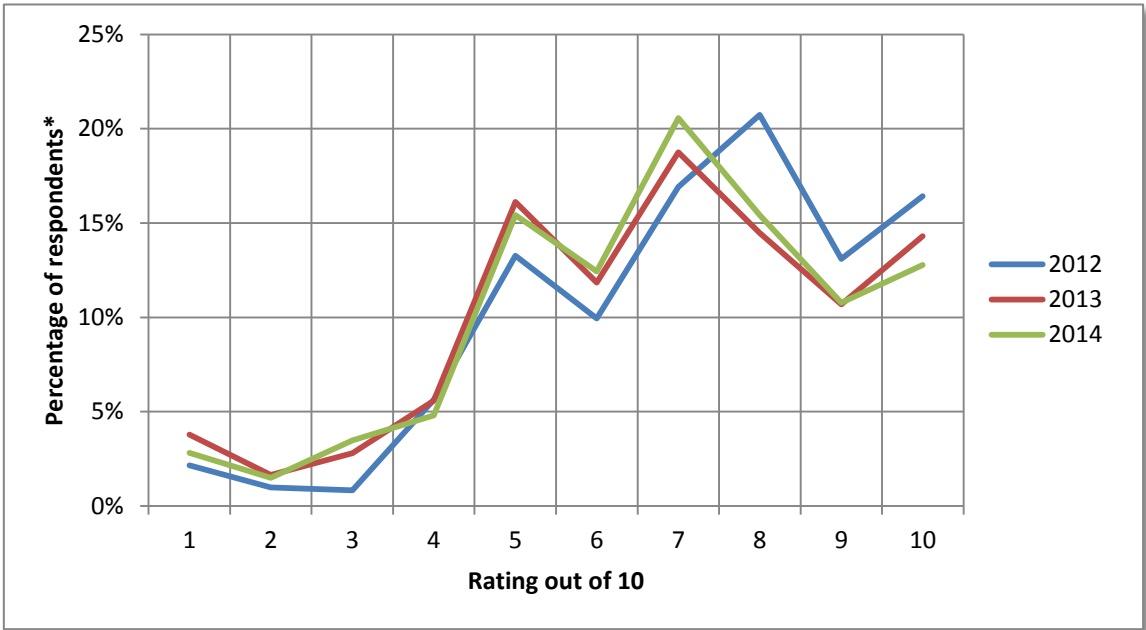
A total of 631 students completed the youth survey in September 2014, half of whom (51%) were aged between 13 and 15. The survey included questions about how respondents felt about living in Manurewa and whether they thought life in Manurewa was improving, staying the same or getting worse. The responses to these questions are set out below.

The survey participants were asked to rate the quality of life in Manurewa, with 1 being *very bad* and 10 being *very good*. The results are shown in the Graph 14.

Four main clusters are evident in the responses, which are consistent across the three survey years: a *very bad* cluster at the tail end, a *neutral* cluster at about 5, a *very good* cluster at the top end, and a *not quite perfect* cluster around 7 and 8.

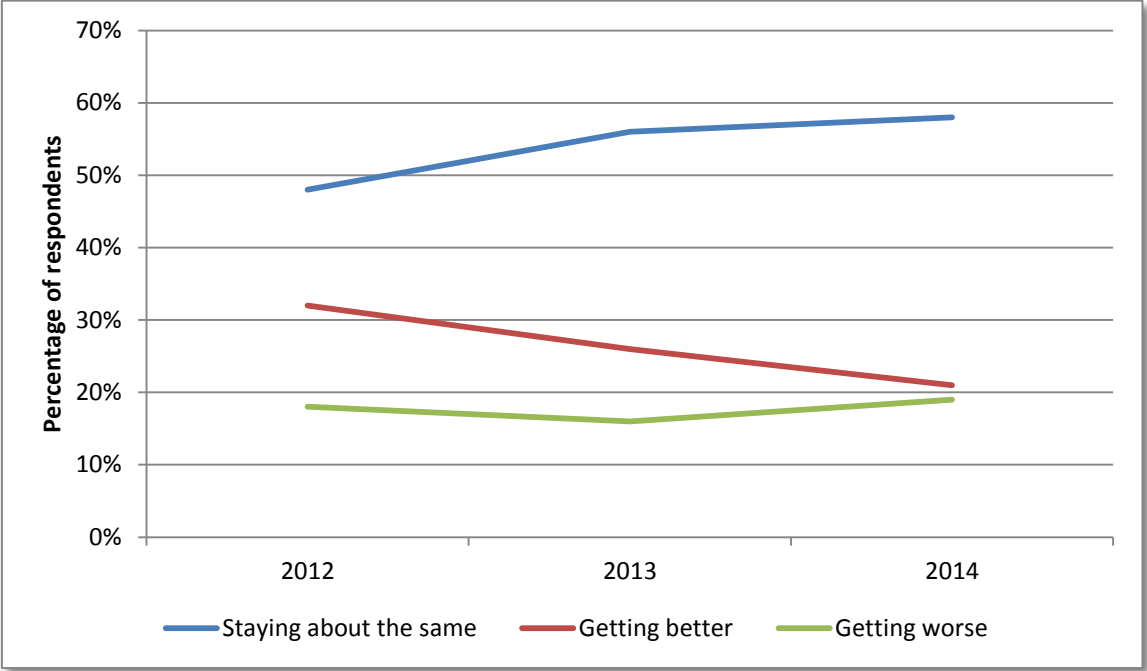
Comparing the three years, the other trend that stands out is that the proportions of respondents giving both a *very good* and a *not quite perfect* rating were higher in 2012 than in either of the subsequent years. The proportions giving lower ratings were less in 2012 than in subsequent years. The results from 2013 and 2014 (when the participants were selected on a more representative basis) are remarkably consistent. In all three years the bulk of respondents gave a rating of neutral to positive.

Graph 14: Young people’s rating of life in Manurewa (1 = very bad; 10 = very good)



Youth survey respondents were asked whether they thought that life in Manurewa was improving, staying about the same, or getting worse. The proportion answering *staying about the same* increased in 2013 relative to 2012 (56% compared with 48%), and increased slightly again in 2014 (58%). The proportion who thought life was *getting worse* dipped slightly in 2013 but returned to a level similar to 2012 in 2014 (19%). The most noticeable trend is in the *getting better* response: this has shown a steady decline from 32% in 2012, through 26% in 2013 to 21% in 2014 (Graph 15). This more pessimistic outlook could be a reflection of the increased age of the average respondents over the three years that the survey has been run. In 2012, 11 and 12 year olds comprised 52% of the total. In 2013 this age group comprised 36%, and in 2014 it comprised 31%. It is likely that younger children feel more positive about life in general than those in their teenage years.

Graph 15: Views of Manurewa youth on life in Manurewa



Those who answered “getting better” or “getting worse” to the question above were then asked to give reasons for their answers. Note that this was an open question without categories to prompt responses.

The more frequent reasons given for life in Manurewa “getting better” included:

- Kind people / good community / feels safe / people help one-another in need
- Community projects / youth groups / people trying to help our community
- New development – shops / houses / new people moving into the area
- Fewer gangs / bad people
- Less crime.

The more frequent reasons given for life in Manurewa “getting worse” included:

- Violence / fights / assaults / murders
- Gangs
- Truancy / kids smoking / kids swearing / kids drinking / kids shoplifting / uneducated kids / parents not in control of their kids
- Thieves / crime

- Public drunkenness / all-night parties
- Scary people / bad people / dangerous people
- People not being community minded / doing wrong to others.

The survey also asked the students how they felt about their school and their home, how safe they felt in Manurewa (during the day, in the evening and late at night) and what, if anything, made them feel unsafe.

Note that the responses to all these questions were unprompted. The reader should not read too much into variation in the percentages recorded in each survey period because the lack of prompting means that the students will have recorded only those aspects that were in the front of their minds at the time. What matters most is that some factors were mentioned by significant proportions of respondents. In short:

What Manurewa youth like and dislike about living in Manurewa

The most common aspects young people liked about living in Manurewa were similar to those recorded in previous surveys:

- Friends and family (28% compared with 17% in 2013 and 26% in 2012)
- The community/neighbourhood feel (28% compared with 18% and 24%)
- The shops – quality, proximity, choice, affordability (18% compared with 8% and 17%)
- Proximity to school / good school (17% compared with 12% and 14%)
- Sports / clubs / parks / recreation (11% compared with 3% and 7%)
- Three factors that increased in prominence were *quiet/peaceful; multi-cultural community; and a fun place to live.*

The most commonly noted aspects young people *disliked* about living in Manurewa were again similar to those recorded in previous surveys:

- Crime and violence (24% compared with 23% in 2013 and 35% in 2012)
- Gangs/ gang recruitment (27% compared with 20% and 19% – a significant increase)
- Bad/harmful people (19% compared with 13% and 7% – a significant increase)
- Dirt/litter/broken glass (13% compared with 10% and 12%)
- Fights and bullying (12% compared with 14% and 7%)
- Graffiti/vandalism (7% compared with 18% and 10%)
- Parties / drinking / drunk people / public drunkenness (10% compared with 5% and 7% – a significant increase)
- Feeling unsafe / dangerous/rough neighbourhood (7% compared with 6% in both previous periods).

What Manurewa youth like and dislike about their schools

When asked to rate their school, most respondents gave a rating of 7 or higher (76% in 2012, and 72% in each of 2013 and 2014). The most commonly-mentioned reasons for liking their schools were:

- Friends / my class etc. (44% compared with 31% in 2013 and 36% in 2012)
- Getting an education / good learning environment (24% compared with 25% in 2013 and 28% in 2012)
- Certain teachers (25% compared with 24% in 2013 and 21% in 2012)
- Sports and associated facilities (19% compared with 21% in 2013 and 18% in 2012)
- Activities, groups and services excluding sports (15% compared with 19% in 2013 and 24% in 2012)
- Specific subjects / options available (11% compared with 9% in 2013 and 12% in 2012)
- Friendly / school community / supportive (9% compared with 15% in 2013 and 11% in 2012).

The most commonly mentioned reasons for disliking their schools were:

- Bullying (16% compared with 22% in 2013 and 23% in 2012 – a significant decline)
- Fights / inter-school fights (14% compared with 14% in 2013 and 17% in 2012)
- Misbehaving/distracting students / peer pressure (14% compared with 13% and 9%)
- Alcohol/drugs/smoking (10% compared with 9% in 2013 and 5% in 2012)⁹⁶
- Dramas / rumours / gossip / exclusivity (9% compared with 6% in 2013 and 4% in 2012).

What Manurewa youth like and dislike about their homes

The ratings respondents gave to their homes slipped slightly relative to previous surveys, but remained above 8/10 on average. The most significant change was in the case of students who lived in parts of Auckland other than Manukau, whose average rating fell from 8.48 in 2012 to 7.88 in 2014 (this was also the lowest average rating overall). Other than that, the average ratings were remarkably consistent across suburbs, ranging from 8.06/10 (Wiri) to the highest rating of 8.65/10 for Manurewa Central.

The most-commonly mentioned reasons for liking their homes were:

- Large size / suits large family (16% in all three surveys)
- Comfortable / homely / warm / healthy (15% compared with 15% in 2013 and 25% in 2012)
- Family (13% compared with 15% in 2013 and 16% in 2012)
- Feeling loved / safe / supported (12% compared with 16% in 2013 and 10% in 2012)
- Location – close to school / facilities / shops / parks / library / transport (12% compared with 8% in 2013 and 11% in 2012)
- Outside space / large section / trees / garden (12% compared with 7% in both 2013 and 2012)
- Great neighbours / close to friends / community (9%, the same as in 2013 compared with 6% in 2012)
- Quiet / peaceful / relaxing (8% compared with 5% in 2013 and 6% in 2012)
- Nice area / beautiful environment (7% compared with 4% in 2013 and 2012)
- Household possessions / facilities (6% compared with 4% in 2013 and 6% in 2012).

Almost a third of youth survey respondents said there was nothing they *disliked* about their home – roughly the same as in 2013 but significantly more than in 2012 (23%). The survey results indicate a significant drop in the number of young people who consider they live in a negative, dangerous environment. Among the others, the more commonly mentioned reasons for disliking their homes were:

- Housing quality / appearance / cold (11% of all respondents in 2014, compared with 12% in 2013 and 11% in 2012)
- Small size of house / outdoor area / lack of privacy (14% compared with 10% in both the previous years)
- Neighbours and others in area / bad people nearby / street fights / noisy neighbours / drinking neighbours (10% compared with 9% in 2013).

Other factors with a bearing on community safety that were mentioned by smaller numbers of respondents in 2014 included getting burgled (3%), drinking/drugs/parties (3%), abuse/shouting/arguments/swearing (2%) and dangerous drivers in the neighbourhood (1%).

⁹⁶ It is important to note that almost all of those who are included in this category (50 out of 55 respondents) were concerned about smoking rather than alcohol or illegal drugs. The reason that these three were lumped into one category is that this was done in previous surveys. In future it may be preferable to introduce a new category of *smoking*, separate from alcohol/drugs, when summarising the youth survey results.

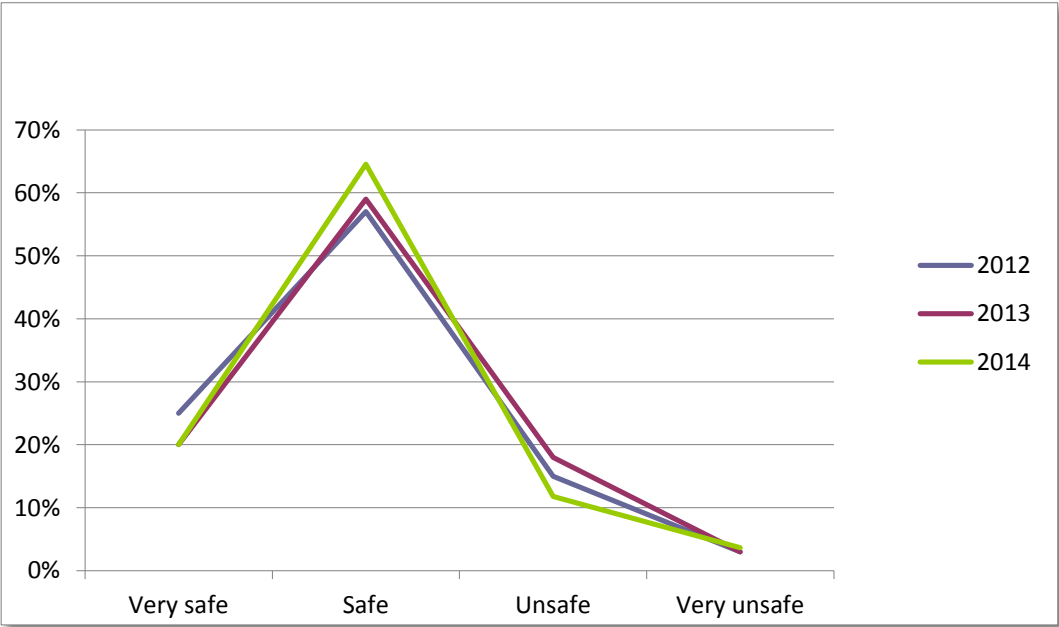
Youth views on personal safety in Manurewa

Survey respondents were asked how safe they felt on the streets of Manurewa during the day, in the evening and at night. The results are shown in the following three graphs. In all cases the results were very consistent across the three years that the survey has been run.

One point to note is that in 2014, 24 respondents said they felt safer during the evening than during the daytime⁹⁷. One reason for this could be that working adults are absent from the community during the day and return in the evening, creating a greater supervisory presence.

The first graph shows that most respondents (85%) said they felt either *safe* or *very safe* on the streets of Manurewa during the day. The greatest proportion of 2014 respondents answered *safe* (as was the case in previous surveys). A slightly higher proportion answered *safe* and a slightly lower proportion answered *unsafe* than was the case in previous surveys. Fewer than 5% answered *very unsafe* in any of the three surveys. See Graph 16.

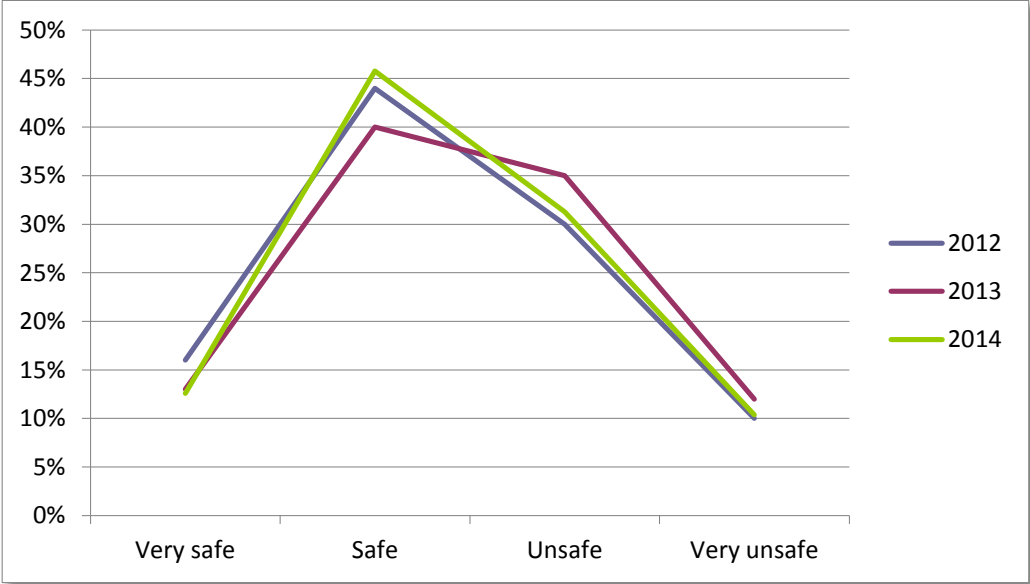
Graph 16: How safe do you feel walking in Manurewa during the day? (Youth Survey)



⁹⁷ 9 said unsafe daytime, safe evening. 1 said unsafe daytime, very safe evening. 13 said safe daytime, very safe evening. 1 said very unsafe daytime, safe evening.

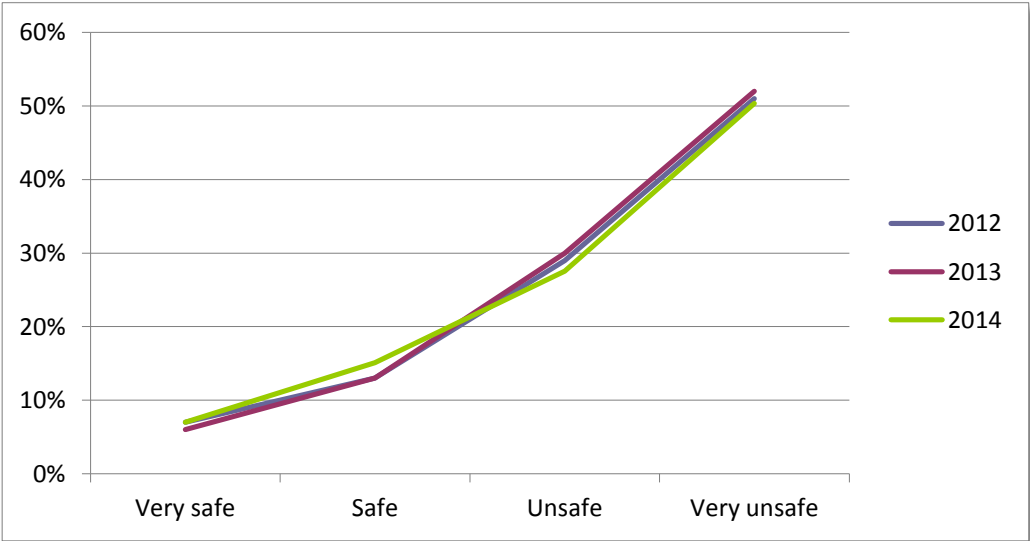
When it came to feelings of safety in the evening, the 2014 results matched those from 2012 very closely. *Safe* was the answer given by the greatest number of respondents. In 2013, the proportion who said they felt *safe* walking in Manurewa in the evening was lower, with a higher proportion saying they felt *unsafe* at this time. See Graph 17.

Graph 17: How safe do you feel walking in Manurewa in the evening? (Youth Survey)



The reported feelings of safety on the streets of Manurewa late at night were dramatically different from those reported for the daytime or evening (Graph 18). The responses were very consistent across the three years. In all cases over 50% of respondents said they felt very unsafe and fewer than 10% said they felt very safe. By far the majority said they felt unsafe or very unsafe late at night (78% in 2014 compared with 82% in 2013 and 80% in 2012).

Graph 18: How safe do you feel walking in Manurewa late at night? (Youth Survey)



The reasons young people gave in 2014 for feeling unsafe on the streets of Manurewa were similar to those recorded in previous surveys. The main reasons given were as follows (percentages are out of the total number who said they felt unsafe at any time):

- Intimidating / threatening people (26%)
- Fear of being hurt or ki-pped (21%)
- Gangs (17%)
- Public drunkenness / public drinking (11%)
- Concerns about rapists / paedophiles (11%)
- Reputation of Manurewa for crime/violence (10%)
- Fear of the unknown/dark / absence of street lighting (10%)
- Fear of being robbed/mugged (6%).

Note that public drunkenness/drinking was recorded for the first time in 2014, with 47 students saying this made them feel unsafe.

Youth survey respondents were asked whether they liked the shopping centres in Clendon and Manurewa (called "South Mall" by some). Forty-eight percent said they liked Clendon and a quarter felt unable to comment either way. Forty-six percent said they liked Manurewa, and 26% were unsure. Compared with previous surveys this is a substantial increase in the number of young people who said they liked both shopping centres (in 2012 and 2013 "yes" responses ranged from 23% to 28%). In both cases the proportion who said they did not like the shopping centres was identical between 2013 and 2014. What changed in 2014 was the proportion that was unsure: substantially lower in both cases in 2014. This could be a reflection of the higher average age of the survey participants over previous years as older youth are likely to be more familiar with shopping centres in their local area, visiting them independently of their parents.

7.9.2 Manurewa students transferring to schools outside Manurewa

As noted in section 3.1, the number of locally-based students who left their schools during the monitored months of 2014 was considerably less than was recorded in 2013, and comparable with the number recorded in 2012. Only one student was recorded as having left because of adverse perceptions of Manurewa.

7.9.3 Use of local community facilities⁹⁸

All the facilities being monitored experienced a reduced level of patronage since the 2012 survey.

The Manurewa Pool and Leisure Centre⁹⁹ includes a pool (for which users pay a charge each time) and a Leisure Centre, which members join and pay a membership fee. Use of this facility continued to decline over the monitoring period. The complex recorded a 39% decline in pool visits between 2013 and 2014, on top of a 32% decline between 2012 and 2013. The decline in patronage is attributed (as it was in the previous period) to the introduction in April 2013 of user pays for those 17 years and over.

On the positive side the number of Leisure Centre memberships increased by 185 (12%) to 1,670 between October 2013 and October 2014, reversing a 1% decline recorded during the previous monitoring period. This increase is attributed to two promotion campaigns undertaken during the 2014 monitoring period. The manager of this facility did not consider that either of the Corrections

⁹⁸ The Manurewa Sports Centre is no longer being included in the monitoring exercise. Because of the large number of people using this facility it is highly unlikely that any patronage by staff of the two Corrections Facilities will have any discernible effect.

⁹⁹ Previously the Manurewa Aquatic Centre

facilities had any impact on use of the facility.

Manurewa Recreation Centre is part of the Clendon Community Centre. This Centre experienced a significant decrease in the number of users (27%) over the same period last year. This was attributed to the repairs being undertaken to the stadium roof. As could be expected, the decrease in patronage has had a detrimental impact on revenue.

Table 50: Patronage of community sports-related facilities in Manurewa (monthly average)

Facility	2012	2013	2014
Manurewa Pool and Leisure Centre (pool visits / LC memberships)	36,017 1,500 members	24,577 1,485 members	15,017 1,613 members
Manurewa Recreation Centre ¹⁰⁰	8,231	6,028	1,670

Te Matariki Clendon Library reported significantly fewer participants in its outreach and in-house services in 2014 compared with 2013 (a 40% drop, and 21% fewer than in 2012). The library manager explained that the decline was due to staff changes at the library. However these average annual figures (Table 51) disguise the fact that between the April and October 2014 reporting periods, participation recovered from a low of 532 to 901 per month, which suggests that the negative impact of these staff changes has now been addressed.

Library visitation fell in 2014 relative to both previous periods, however again the end-of-year monitoring figure was a slight improvement on the mid-year monitoring figure (29,150 per month compared with 28,184). The library manager attributed this to outreach visits to local early childhood centres and schools, which have reached parents who might not otherwise have been library visitors. The number of active membership cards continued to show a small but steady increase.

Table 51: Te Matariki Clendon Library patronage (monthly average)

Activity	2012	2013 ¹⁰¹	2014 ¹⁰¹	Change from 2012
Total participants in all outreach and in-house services	906	1,203	716	-21%
Number of visitors to library	31,686	30,537	28,667	-10%
Number of active membership cards	5,017	5,277	5,319	+6%

Source: Auckland Libraries, Auckland Council.

7.9.4 Patronage of facilities by ARWCF and ASCF workers

The ARWCF staff survey identified that 41 of the 209 staff surveyed used one or more of the three community facilities being monitored (compared with 44 in 2013) and that 48 lived in households where one or more other household members used one or more of the facilities (compared with 38 in 2013). In most cases both the staff member and other members of their household used the facility(ies) but in a few cases the staff member did not while other members of their households did. As could be expected, all but a few of those using the facilities were resident in Manurewa or Manukau City centre.

¹⁰⁰ The Recreation Centre is part of the Clendon Community Centre, which also houses Te Matariki Clendon Library. Library patronage has been counted separately.

¹⁰¹ Average of the mid-year and annual monitoring figures.

Of the 1,352 respondents to the ASCF – Kohuora construction workforce survey between November 2013 and October 2014, only 74 (5%) said they and/or other members of their households used one or more of the facilities being monitored. This was not significantly different from the previous year’s figure (3%). (Note that there was a very high rate of non-response to these questions: 515 respondents – 38% – answered neither the question about whether they used local facilities nor the one about other members of their households. It is expected that a large proportion of these did not respond because they assumed the questions did not apply to them.)

Respondents to the construction workforce survey were asked to specify the number of people in their households in each category, however some answered “yes” instead of giving a number. Each “yes” can be assumed to represent at least one person from each household, and has been counted as such in the table. However this is likely to be an under-estimate, hence the “at least” in the total line.

Table 52: Patronage of community facilities by ARWCF staff and ASCF construction workers and their families (2014)

Employer	Number of household members using each facility			
	Manurewa Aquatic Centre	Manurewa Leisure Centre	Te Matariki Clendon Library	Facilities used not specified
ARWCF staff and families (42 households)	152	68	118	8
ASCF construction workers and their families (74 households)	91	50	55	22
Total (at least) – 116 households	243	118	173	30

7.9.5 Youth membership of community organisations

The number of young people involved in community organisations was chosen as an indicator of community pride and participation. Respondents to the Youth Survey were asked whether they were members of one or more community organisations, and if so, what type of organisation(s).

Of the 628 respondents to this question, 51% were members of one or more community organisations, compared with 49% in 2013 and 62% in 2012. The groups that the 2014 youth belonged to included:

- Churches (179, or 29% of all respondents)
- Sports teams or clubs (155, or 25%)
- Youth groups (104, or 17%)
- Arts / performance organisations, including Kapa Haka (31, or 5%)
- Library clubs (2 respondents).

8. Tangata Whenua

There is no 2015 data to update this section beyond the 2014 report.

Section summary – what does the data say about tangata whenua in relation to Corrections facilities

Concerns were raised at the BOI about the effect that the ASCF – Kohuora could have on:

- The natural environment / landscape surrounding the area including the ability of mana whenua to exercise kaitiakitanga at the site; and
- The cultural identity of iwi / hapū groups that affiliate to the area including the cultural awareness and understanding of people regularly in the vicinity of ASCF – Kohuora.

As noted in the 2012 report, all of the indicators agreed at that stage by the Tangata Whenua Committee (TWC) related to the operations phase of the ASCF – Kohuora. Indicators are yet to be identified and measured, but this is a priority for 2016/2017.

It is not yet known what effects the operation of the ASCF – Kohuora may have on local iwi / hapū. During the development of operational policies, procedures and programmes for the ASCF – Kohuora, the TWC will be closely consulted to identify potential effects and to design methods and identify data sources to monitor these effects.

9. Transport modes and traffic counts

Section summary – what does the data say about local traffic in relation to Corrections facilities

Travel mode and trip numbers for ARWCF: Of the 209 ARWCF staff in 2014, 9 (4.3%) travelled by bicycle, walked or took public transport some of the time. The vast majority (95.7%) commuted by private or work vehicle. Most of the staff (69%) commuted from the local area or Counties Manukau. Visitors to the site were estimated to be 1125 per month (or 36 visits per day) in 2013. No data on total traffic movements in Counties Manukau is provided, but it is known to be high on major roads (i.e. 10,000 vehicles per day on Browns Road). Therefore this data (about 250 x 2 traffic movements per day) supports the hypothesis that the ARWCF facility potentially contributes to a low but notable effect on traffic in the local area.

Travel mode and trip numbers for ASCF-Kohuora construction workforce: Of the approximately 460 ASCF construction staff on site each day in 2014, 88% commuted by work vehicle or private car. About half (48%) commuted from the local area or Counties Manukau. No data on total traffic movements in Counties Manukau is provided, but is known to be high on major roads (i.e. 10,000 vehicles per day on Browns Road). Therefore this data (about 405 x 2 traffic movements per day) supports the hypothesis that the ARWCF facility potentially contributes to a low but notable effect on traffic in the local area.

Overall assessment: *There is a large volume of vehicles in the local area already, especially at peak hours. Therefore any additional vehicle traffic, especially the presence of several hundred vehicles per day (say 5-10% of total traffic) supports the hypothesis there is a low but notable potential effect on traffic.*

9.1 Background

There is no 2015 data to update this section beyond the 2014 report.

Staff of the ARWCF, together with construction workers who were inducted to the ASCF – Kohuora site between 1 November 2013 and 31 October 2014 were asked how they travelled to work, and from where.

Travel to the prisons by private vehicle is almost inevitable given the limited public transport service in this area. The nearest train station is Homai, which is 3.8 km from the ARWCF and the nearest bus-stop is about 1.8 km from the ARWCF.

9.2 ARWCF staff

Over a third (37%) of the 209 ARWCF staff surveyed come from the local area and 32% live in the wider Counties-Manukau area (see section 2.1.3). A further 21% come from other parts of Auckland City (a lower proportion than was recorded in previous surveys). These are potentially the easiest areas from which to provide public transport to the prison site.

As shown in Table 53, the vast majority of staff at ARWCF travels to work by private vehicle and on their own. Most of the 35 people who travelled by other modes (including sharing a car with others) said they travelled by private car on their own *or* by those other modes (some respondents ticked more than one category). Only seven said their *usual* method of travel was by a mode other than private car on their own: four said they *usually* travelled by shared car, one by public

transport, one by bike, and one on foot. All of these people said they lived locally or in wider Counties-Manukau (except for the public transport user, who did not specify a residential location).

Only two of the 26 who said they travelled by shared private car lived outside the local or wider Counties-Manukau areas, which suggests that organising car-pooling is easier for those who live closer to the prison.

Although the proportion of staff who share private transport is low (only 12% compared with 96% who travel by single-occupant car), it is nonetheless higher than was the case in 2013, when only 5% said they shared private transport with others. In 2013 the number using public transport was higher (four individuals compared with one), and the numbers cycling and walking were the same.

Table 53: ARWCF staff: Usual mode of travel to work by residential suburb

Residential area	Travel to work mode (can include several options)				
	Car etc., on own	Car etc., sharing w others	Public transport	Biking	Walking
Local Area (Manurewa / Manukau City Centre)	73	16		2	5
Wider Counties Manukau area (Incl. Mangere, Otara, Papatoetoe, Otahuhu, Papakura, Botany, Highland Park, Tamaki, Opaheke, Conifer Grove, Karaka, Dannemora, Pukekohe, Waiuku)	62	8		1	
Central Auckland (Incl. Onehunga, Mt Roskill, Mt Albert, Mt Eden, Mt Wellington, Greenlane, Pt Chevalier, Kelston, Blockhouse Bay, Hillsborough, Ellerslie, Epsom, New Lynn, Avondale, Glendowie)	25	1			
West Auckland / Waitakere (Incl. Henderson, Westgate, Ranui, Glendene, Te Atatu Peninsula, Hobsonville, Titirangi)	12	1			
North Auckland (Incl. Takapuna, Albany, Devonport, East Coast Bays)	7				
Franklin District / Waikato (Incl. Te Kauwhata, Port Waikato, Huntly, Hamilton)	12				
Outside wider Auckland Region	1				
Location not stated	8		1		
Total	201	26	1	3	5

Note that one person did not state mode of travel. 26 people specified more than one common travel mode therefore numbers do not add to 209 (the number of staff who completed the survey questionnaire).

9.3 ASCF – Kohuora construction workforce

As noted in section 6.1.1 (Table 37), of the 1,352 respondents to the ASCF – Kohuora construction workforce survey in the 12 months to 31 October 2014, all but 6% (non-respondents excluded) lived in the Auckland Region. Twelve percent lived in the local area, and an additional 34% lived elsewhere in Counties Manukau.

Respondents were asked what travel mode they *usually* used to get to work at the site. The

predominant mode of transport was private or company vehicle, travelling without passengers (49%), followed by private or company vehicle together with other passengers (33%). A further 6% responded that they travelled by a mix of modes, but almost all of these meant that some days they drove by themselves and other days they drove with one or more companions. There was no significant difference in travel choice between the “local” workforce and the workforce as a whole.

Of the 46 respondents who travelled to work at the ASCF – Kohuora by walking, biking or public transport (including 21 who specified one or more of these options as part of a mix) 17 lived in the local area and a further 15 elsewhere in Counties Manukau. Most of the others lived in central Auckland City or did not state where they lived. For a comparison of modes of travel by residential location of the ASCF – Kohuora construction workforce, see Appendix 1.

SecureFuture data on the number of construction workers on site each day during the 12 months to 31 October 2014 (460 on average compared with over 500 in 2013).

Table 54: Usual mode of travel to ASCF – Kohuora by the construction workforce

Usual mode of travel	Number of respondents		Percentage of respondents	
	2013	2014	2013	2014
By private or company vehicle and on own	991	668	54%	49%
By private or company vehicle sharing with one or more others	491	450	27%	33%
Mixture of modes ¹⁰²	170	75	9%	6%
By company vehicle (passengers not specified)	-	37	-	3%
Public transport	16	11	1%	1%
Biking	6	-	0%	-
Walking	6	8	0%	1%
No response	132	98	7%	7%
Total responses	1,850	1,352		

9.4 Visitors to ARWCF

It was intended that, as with previous surveys, people visiting ARWCF prisoners would be asked to complete a questionnaire to find out where they came from and how they travelled.

As in previous years, monitoring the number of visitors to the ARWCF and their mode of travel proved to be problematic in 2014. During the monitoring it was found that previous measures of visitor traffic to the facility had not included the service providers who visit the prison on a regular basis. Also, as in previous years, the survey was not being undertaken at the reception area in a systematic way which meant that many visitors were not being recorded, especially those who had visited the prison previously and did not understand the need to complete the (very simple) form each time they visited the prison. Several attempts were made to improve the administration of the survey within the reception area but in the end the researchers decided to discontinue the

¹⁰² As in previous surveys, almost all those who recorded a “mixture of modes” travelled by private or company vehicle. Most either drove on their own, or else travelled with others in a motor vehicle. A small minority travelled by public transport, biking and/or walking as well as by motor vehicle. Only two in this category did not travel by private motor vehicle. Both travelled by public transport and bike/on foot.

process as, inevitably, the results would be inaccurate. Discussions were held with the Department of Corrections' about the possibility of installing a traffic counter at the entrance to the ARWCF visitor car park as an alternative, more reliable traffic counter. This was not pursued due to the resignation of the Community Liaison Manager. It is recommended that the CIF consider the value of traffic generation monitoring at both prisons once the ASCF is operational and if it is considered useful, that methods to achieve an accurate measure (traffic counters or some other method) be reconsidered, perhaps in consultation with Auckland Council.

As an indication of the traffic volumes generated, the 2013 report included an estimate based on the total number of all visitors to ARWCF during the monitoring month (using the records of completed visitor slips at the reception desk), with the assumption that at least half of these visitors would have travelled to the facility on their own and in a car. During the monitoring month, there were 1,125 visitors to ARWCF. Based on 50% travelling by car and on their own, this constitutes about 562 cars per month.

Appendix 1: ASCF construction workforce: travel by residential location

	By car and on your own	By car sharing with one or	Mixture of Modes	By public transport (train)	Don't ever travel to work at the	Make deliveries to the site	Biking	Walking	Plane	No Response	Total
Local Area											
2013	125	64	39	3	3	2	3	2	0	15	256
2014	68	48	15	2	1	-	-	3	-	11	151
Counties Manukau (excluding local area)											
2013	268	127	41	5	12	4	1	2	0	25	485
2014	225	130	23	5	3	-	-	1	-	36	432
Central Auckland City											
2013	251	102	35	6	3	4	0	1	0	25	427
2014	153	84	15	3	1	-	-	-	-	21	285
North Auckland											
2013	119	39	10	0	0	1	0	0	0	9	178
2014	77	57	6	1	-	-	-	1	-	7	152
West Auckland											
2013	154	86	30	2	3	0	0	0	0	30	305
2014	79	62	13	-	-	-	-	-	-	7	171
Outside Auckland Region											
2013	30	37	9	0	0	0	0	0	1	1	78
2014	14	20	-	-	-	-	-	1	-	2	40
Franklin District / Waikato											
2014	10	27	2	-	-	-	-	-	-	1	40
No location stated											
2013	44	36	6	0	2	4	2	1	0	27	122
2014	42	22	1			-		2		13	81
Total											
2013	991	491	170	16	23	15	6	6	1	132	1,851
2014	668	450	75	11	5	-	-	8	-	98	1,352¹⁰³
Percentage											
2013	58%	29%	10%	1%	1%	1%	-	-	-		
2014	53%	36%	6%	1%	-	-	-	1%	-		

¹⁰³ In addition to those who answered the first two categories, 37 respondents said they usually travelled by "work vehicle" but did not specify whether they travelled alone or with other passengers.

Appendix 2: Terms and acronyms used in this report

ARWCF: Auckland Region Women’s Corrections Facility

ASCF – Kohuora: Auckland South Corrections Facility – Kohuora

BOI: Board of Inquiry

CFs: Corrections Facilities

CIF: Community Impact Forum

CLM: Community Liaison Manager

ECE: Early Childhood Education

MBCT: Manukau Beautification Charitable Trust

NGO: Non-Government Organisation

Offenders: people serving sentences or required to adhere to conditions (i.e. parole or release conditions) in the community

Offenders on parole: Parolees are those who have been sentenced to imprisonment for two years or more and granted release by the NZ Parole Board.

Offenders on release conditions: Those who have served two years or less and are released after serving half of their sentences in custody.

PARS: Prisoners’ Aid and Rehabilitation Society

PHO: Primary Health Organisation

Prisoners: people serving a sentence in prison

RTLb: Resource Teacher: Learning and Behaviour

SAA: Supplementary Accommodation Allowance

SIFAC: Social Impact Fund Allocation Committee

SIMP: Social Impact Monitoring Plan

STS: people who have served their sentence(s) and are no longer being managed by the Department of Corrections

TWC: Tangata Whenua Committee

YJF: Youth Justice Facility

Appendix 3: Services provided by NGOs contributing data to the SIMP monitoring

The **Manurewa Beautification Trust** undertakes a range of activities to enhance the visual qualities of Manukau. One of these is the removal of graffiti for which they have a team of 5 supervisors and 20 volunteers. Manurewa Crimewatch Patrol Inc. reports all instances of graffiti within Manurewa to Auckland City Council, which then refers these to the Manurewa Beautification Trust to clean up.

Manurewa Marae is a pan-tribal marae which provides a variety of services to the local community including specific services aimed at supporting whanau to independence through whanau planning, advocating, mentoring, counselling, and referrals to social service providers (such as housing, budget advice, health, Work and Income, legal services and parenting skills). The Marae also provides associated work for prisoners sentenced to community service. Over the past seven years the marae has catered for about six prisoners in this way.

PARS is contracted to provide services to all the prisons in the northern region (including Ngawha, Mt Eden, Paremoremo and ARWCF). In addition to providing accommodation assistance (described in section 2.4), PARS provides a range of other assistance to prisoners and their families. This includes organising bank accounts, access to benefits, assisting with transport needs, liaison with government departments, and generally supporting prisoners' families in the community to cope. It also facilitates family contact by providing funding and escorting services to enable children to visit their caregivers in prison.

Pillars is a nationwide NGO that supports families of prisoners. Pillars is contracted by the Ministry of Social Development to provide social work support for parent(s) and/or caregiver(s) in families of prisoners in Christchurch and Auckland as well as a long term mentoring programme for their children. To be accepted onto the programme, the family must have at least one of the following social needs: high-risk behaviours, social isolation, grief, low family resiliency, and family reintegrating back into the community. The service (commonly known as Family Wraparound) is provided by two qualified social workers and volunteer mentors. The Auckland service is contracted to provide support for 27 families a year in South Auckland. Pillars is currently operating at full capacity for this service but new referrals will be accepted.

Pillars also provide a nationwide phone and on-line help service for families of prisoners. This service is paid for through donations. In addition, a school-to-school mentoring programme (Together Programme) is provided for students at Rongomai primary school who are affected by the imprisonment of their parents and who are assessed as potentially benefitting from a mentoring relationship. The mentoring is provided weekly by 20 senior secondary students from St Peters College, Epsom. Pillars provide expertise and supervision for the programme, but the programme is owned by the schools themselves.

In addition to these specific services, Pillars provides:

- information to support children and families of prisoners
- expert advice and training in best practice to other service providers (schools, prisons, health professionals, social workers) and community-based groups to make them more aware of and responsive to the experience and issues faced by children/families with a member in prison
- research and information gathering that ensures an up-to-date picture of the issues surrounding children and families

- a nationwide campaign promoting the needs of the children of prisoners (Children of Prisoners Week) which is held at the end of September each year.

The **Saint Elizabeth Anglican Church** is based in Clendon and has 1.5 paid staff members and 14 volunteers working with prisoners (mostly from ARWCF). The main input the church provides is supporting prisoners at court hearings and on release. Specific services include providing housing, support for parolees, budgeting assistance and counselling. In addition they provide support to prisoner families living in the local community. They also undertake work for Community Probation, which involves supervising offenders on community sentences who are undertaking community work (the monitoring data does not include the time involved in this work). Volunteers also conduct church services at the prison on Sundays.

The Sisters of Mercy – Wiri have one paid member of staff and three volunteers who provide a service at ARWCF. The Sisters of Mercy visit prisoners at ARWCF every Tuesday for 2 hours. During that time they speak to prisoners either in groups or individually, depending on the needs of the prisoners. One Sunday each month the Sisters conduct services at the prison for a total of 2.5 hours.

Te Manu Aute Whare Oranga Community Clinic is situated beside the Manurewa Marae in the heart of the local area and is the only clinic which offers free health services. Over 70% of the patients at this clinic are in one of the two highest deprivation quintiles. About 90% are Maori. In addition to the GPs who work from the clinic, traditional healing services and specialist services in drug and alcohol addiction, mental health and gambling addiction are provided.

Te Whakaora Tangata has been operating in the Manurewa area since 1999. The organisation works with vulnerable families to provide “emotional healing” for individuals and families, including parenting courses and marriage advice. The service is delivered through a mix of four three-hour courses (held at Manurewa Marae) and as necessary, one-on-one coaching. The aim is to restore the family unit by dealing with the root causes of family problems and encouraging forgiveness. Te Whakaora Tangata also provides practical assistance in dealing with government agencies such as Work and Income, Child Youth and Family, Family Court, Corrections and the Parole Board. The organisation is funded from donations from charitable trusts and individuals. It receives no financial support from central or local government.